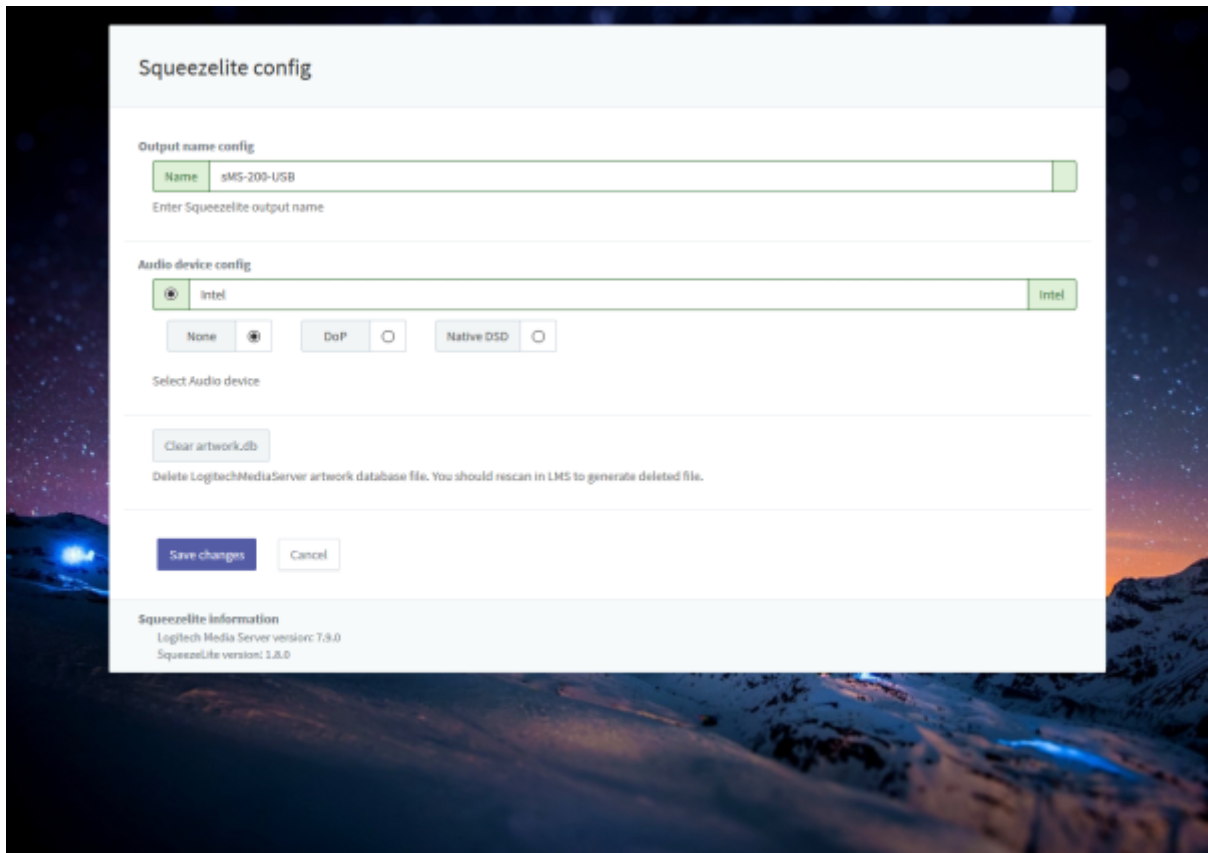


Squeezelite Logitech Media Server(LMS)

Tidal, Qobuz, internet radio

Logitech Media Server

, LMS



- **Name:** LMS
- **Audio device config:** USB DAC
- **None:** PCM
- **DoP:** DSD DoP
- **Native DSD:** Native DSD 가 DAC Native DSD
- **Clear artwork.db:** LMS LMS rescan

LMS

rescan

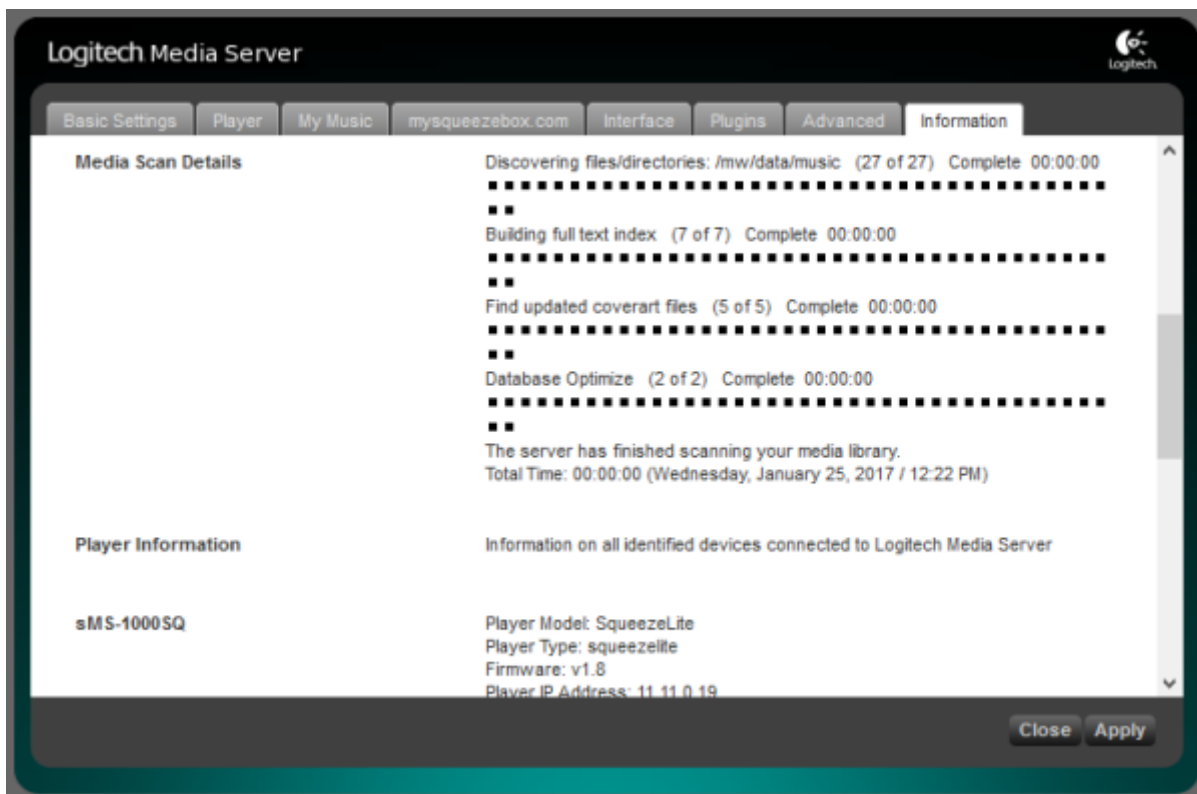
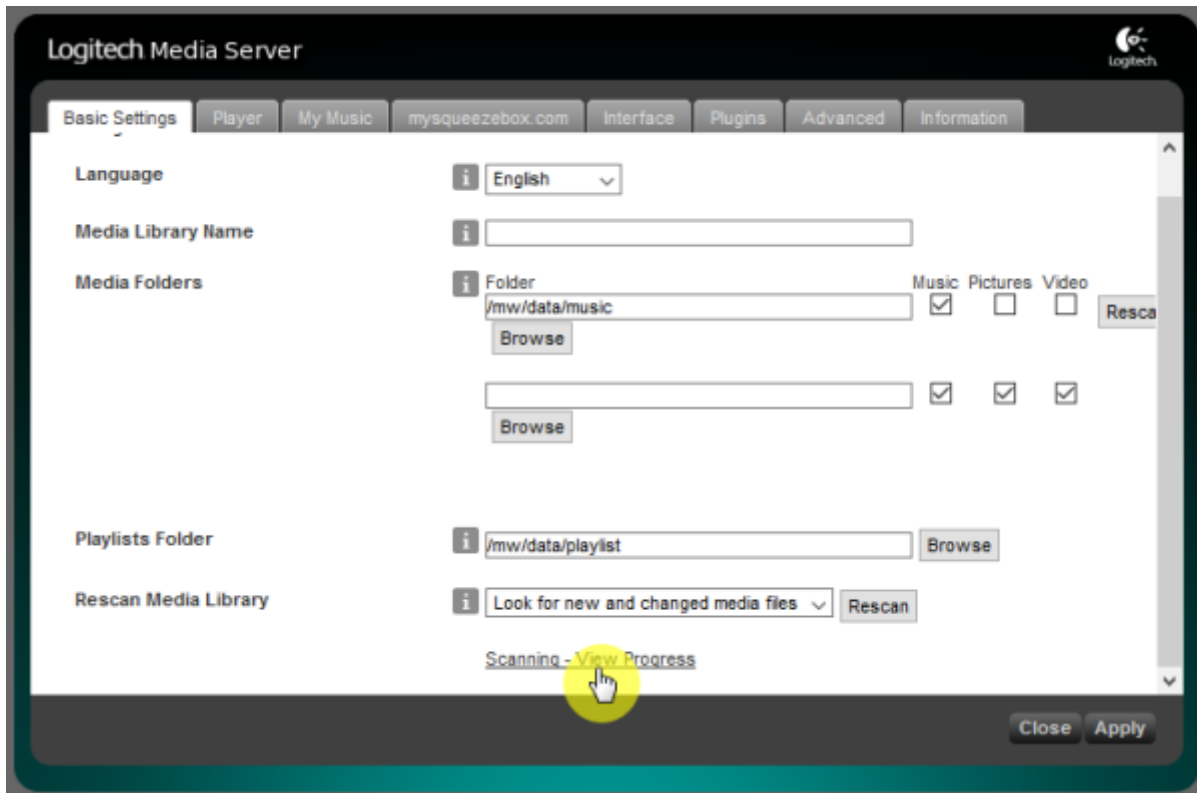
Settings



Basic Settings "Rescan"



"Scanning - View Progress"



Quboz, TIDAL

ickStream

- http://wiki.ickstream.com/index.php/Open_Beta_Squeezebox_Installation

ickStream 가 , LMS > Settings > Advanced > ickStream

ickStream

ickStream

The screenshot shows the Logitech Media Server web interface. At the top, there are navigation tabs: Basic Settings, Player, My Music, mysqueezebox.com, Interface, Plugins, Advanced, and Information. The 'Advanced' tab is selected, and a sub-tab for 'ickStream' is active. Below the navigation, a message states 'Changes have been saved.' The settings are as follows:

- Sort albums for artist:
- Background daemon port:
- SSL peer verification:
- Proxied streaming for hires services:
- ickStream Music Platform Service:

Below the service settings, there is a note: 'If you have just logged in successfully, click "Refresh" button to'. At the bottom, there are links for 'Terms of use' (Logitech Media Server, SqueezeLite) and 'Privacy Policy'.

This screenshot shows the same Logitech Media Server interface, but the 'ickStream Music Platform Service' is now 'Logged in as: sotm.dev@gmail.com'. The 'Refresh' button is present, and a 'Logout' button has appeared. Below this, there are additional settings:

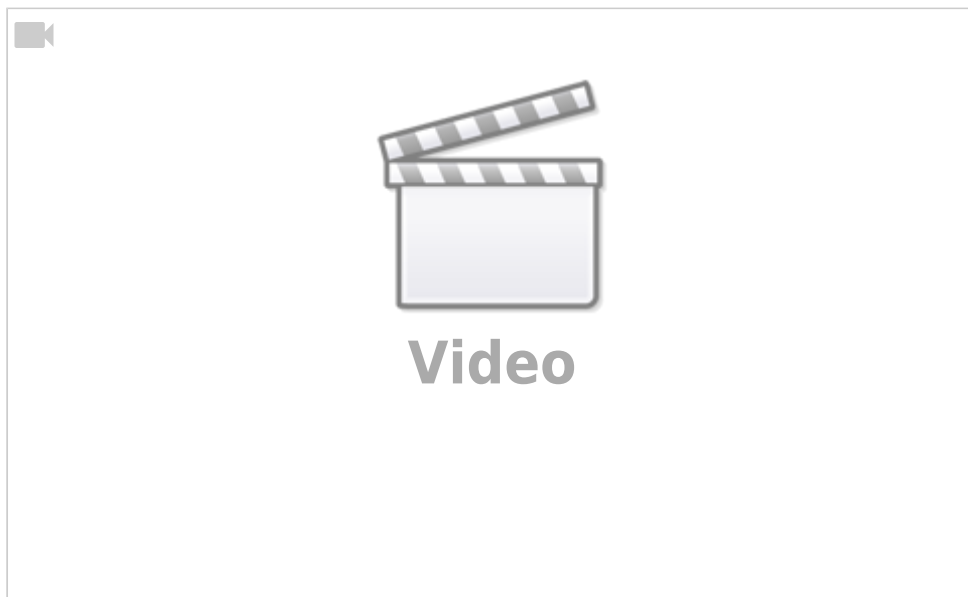
- Remotely controllable players:
- Registered players:

The 'Terms of use' and 'Privacy Policy' links remain at the bottom.

LMS

My Apps

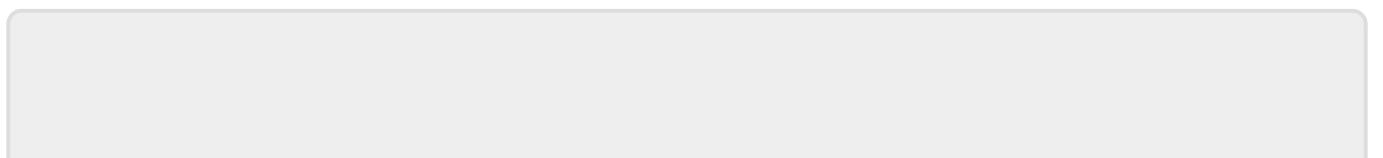
ickStream



Spotify

; Spotify

: 2017/01/24 22:31



From:

<https://www.wiki.sotm-audio.com/> - **SOtM docs**

Permanent link:

<https://www.wiki.sotm-audio.com/doku.php?id=ko:squeezelite&rev=1485315104>

Last update: **2017/01/24 22:31**

