

- SMS-200 V0.3.0                      SMS-1000SQ Eunhasu V0.3.0
- Wifi dongle
  - RTL8812AU

# Simple Instruction

USB

Wifi USB

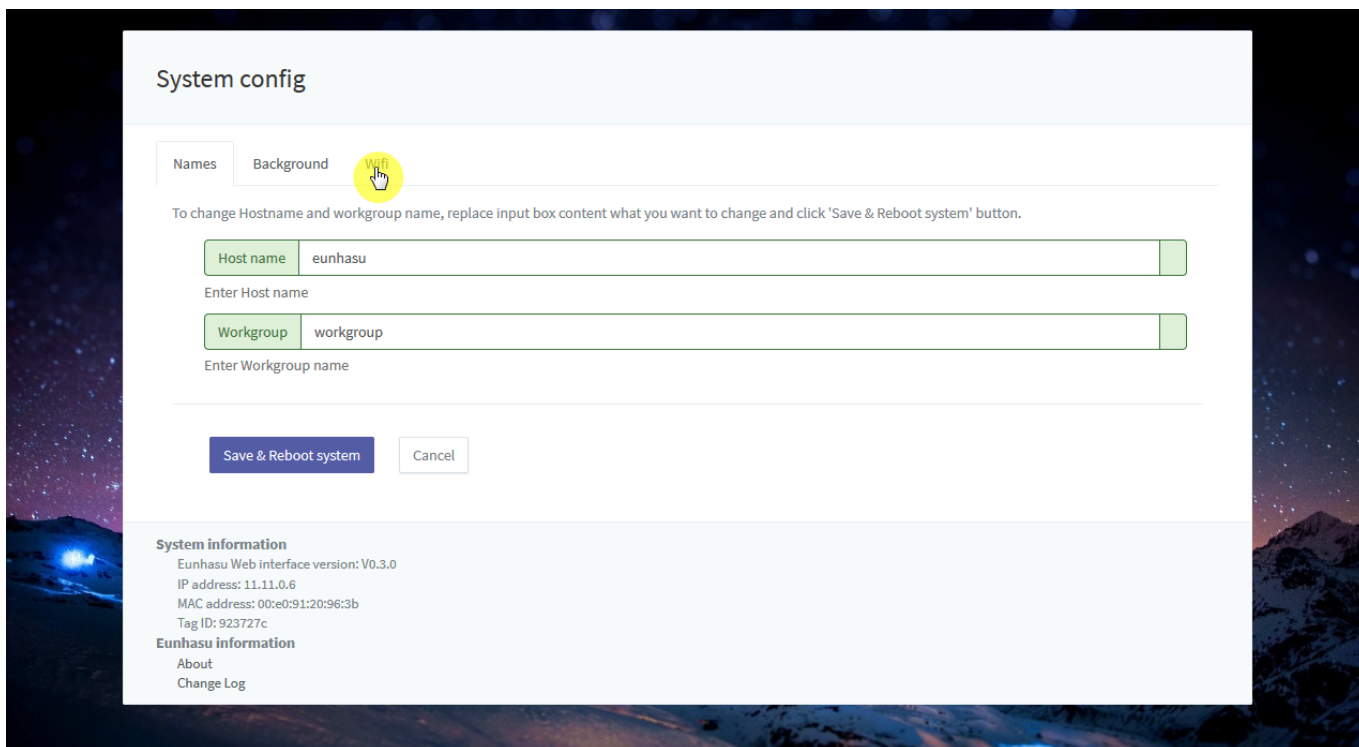
. Wifi

LAN

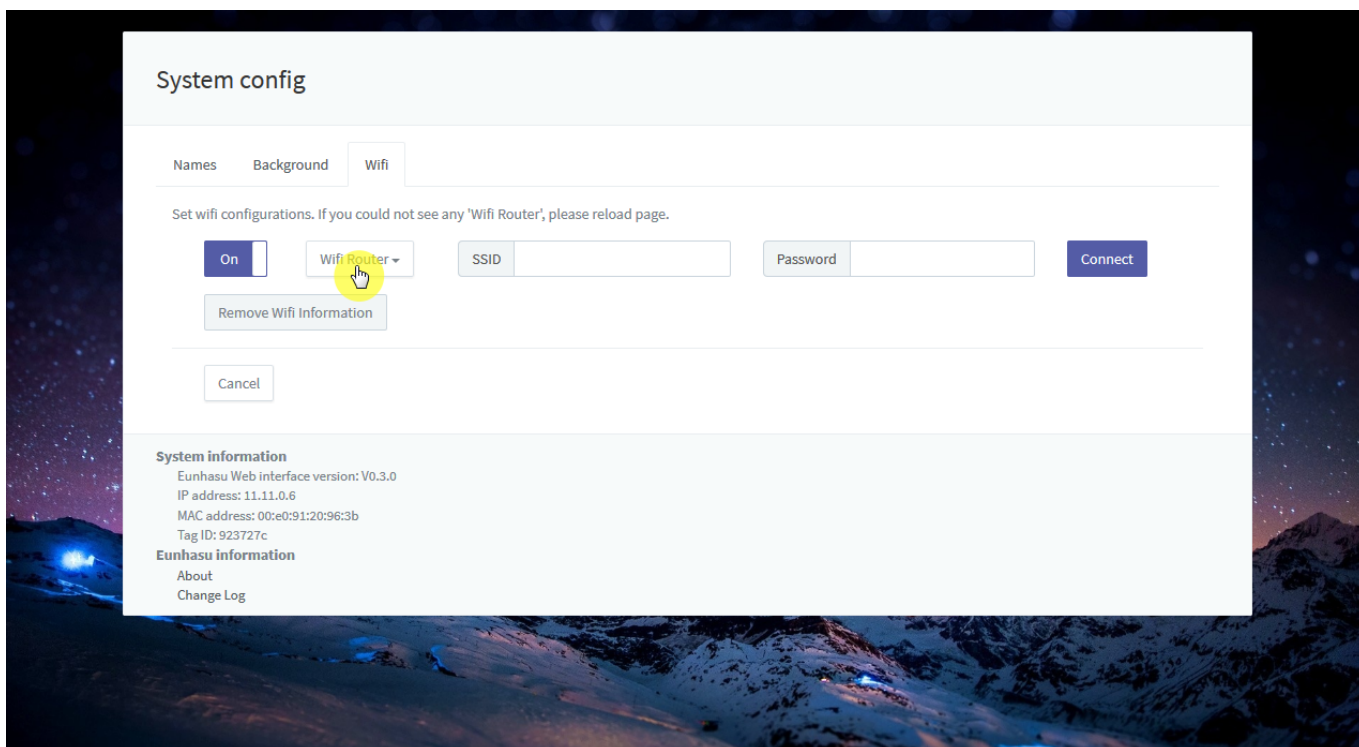


System config

'Wifi'



### 'Wifi Router'

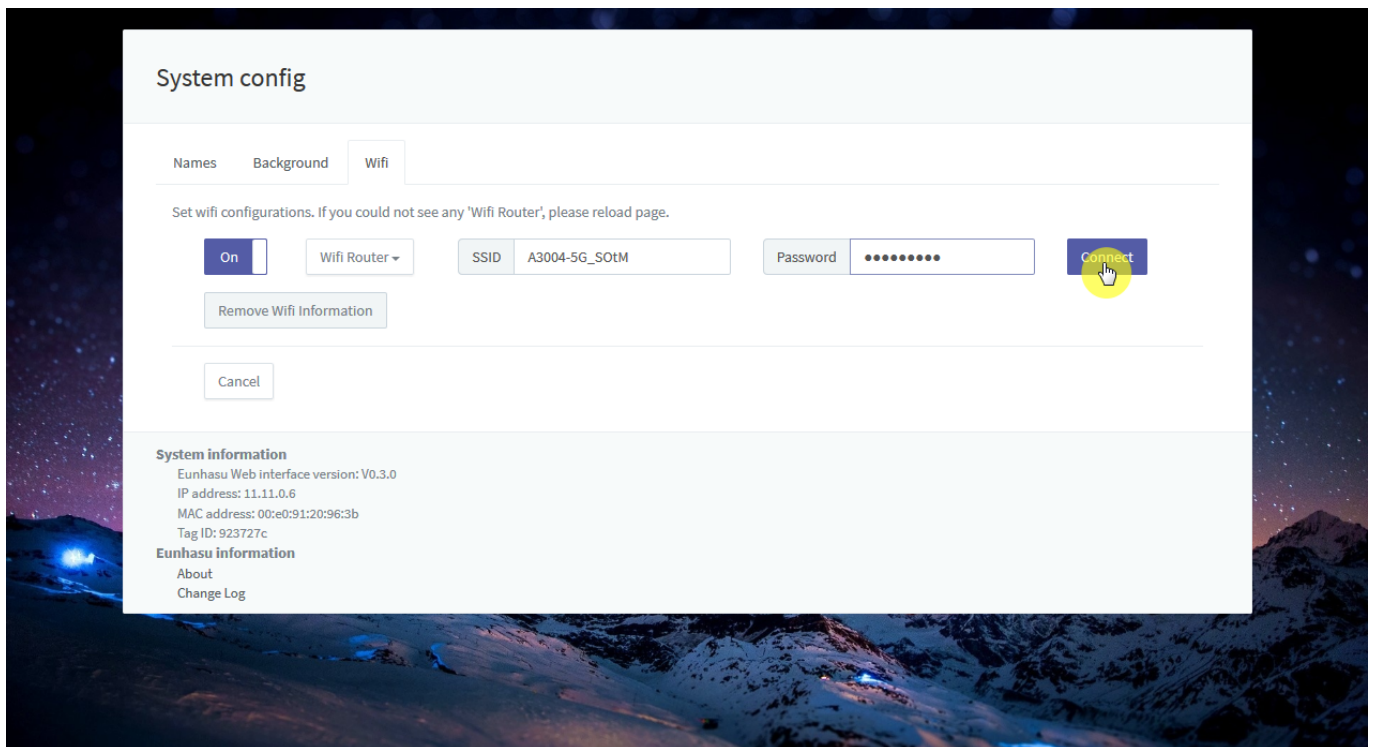


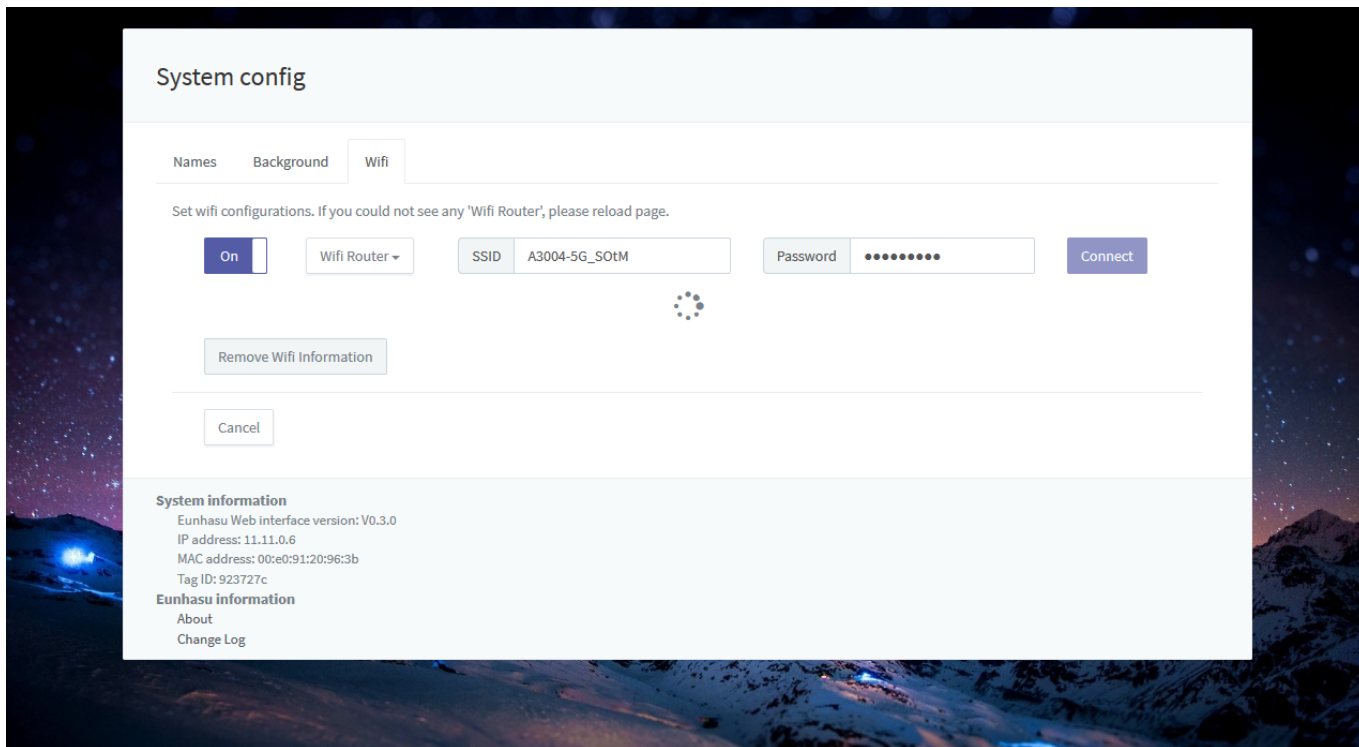


가

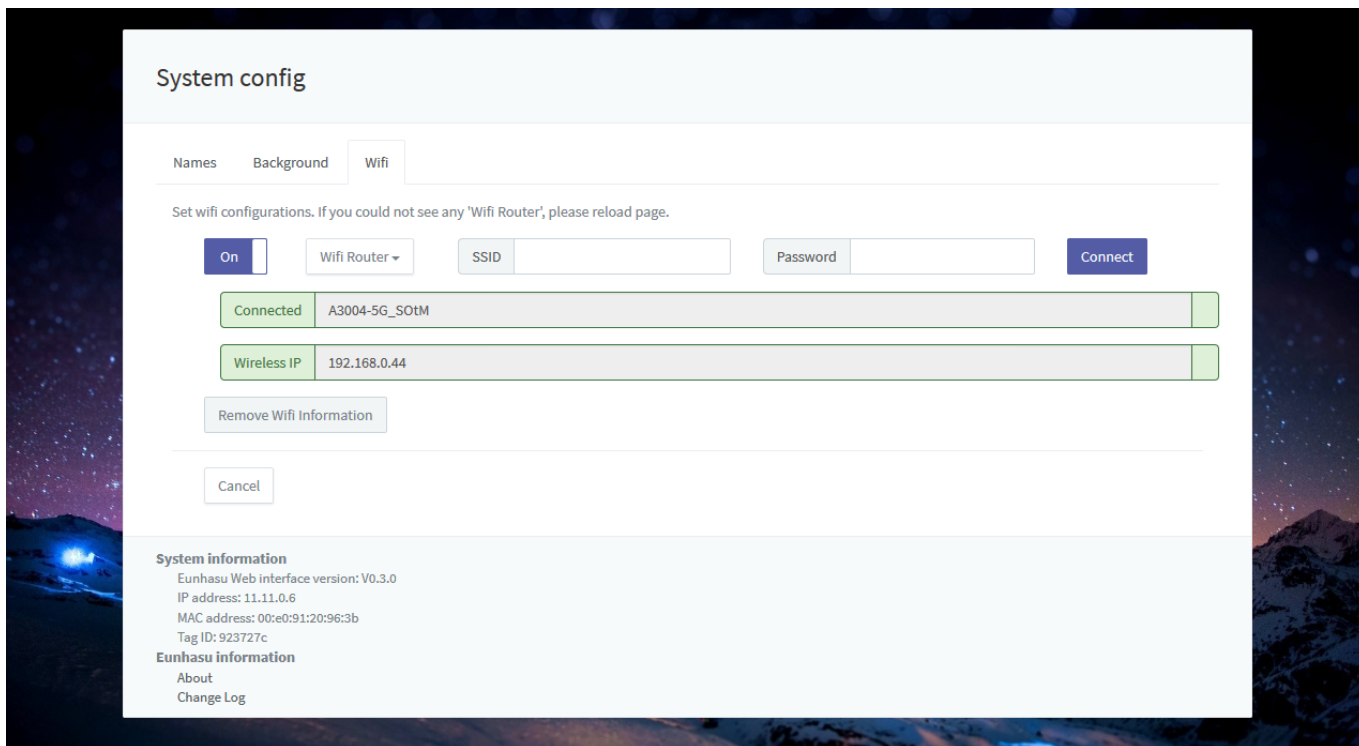
'Connect'

.



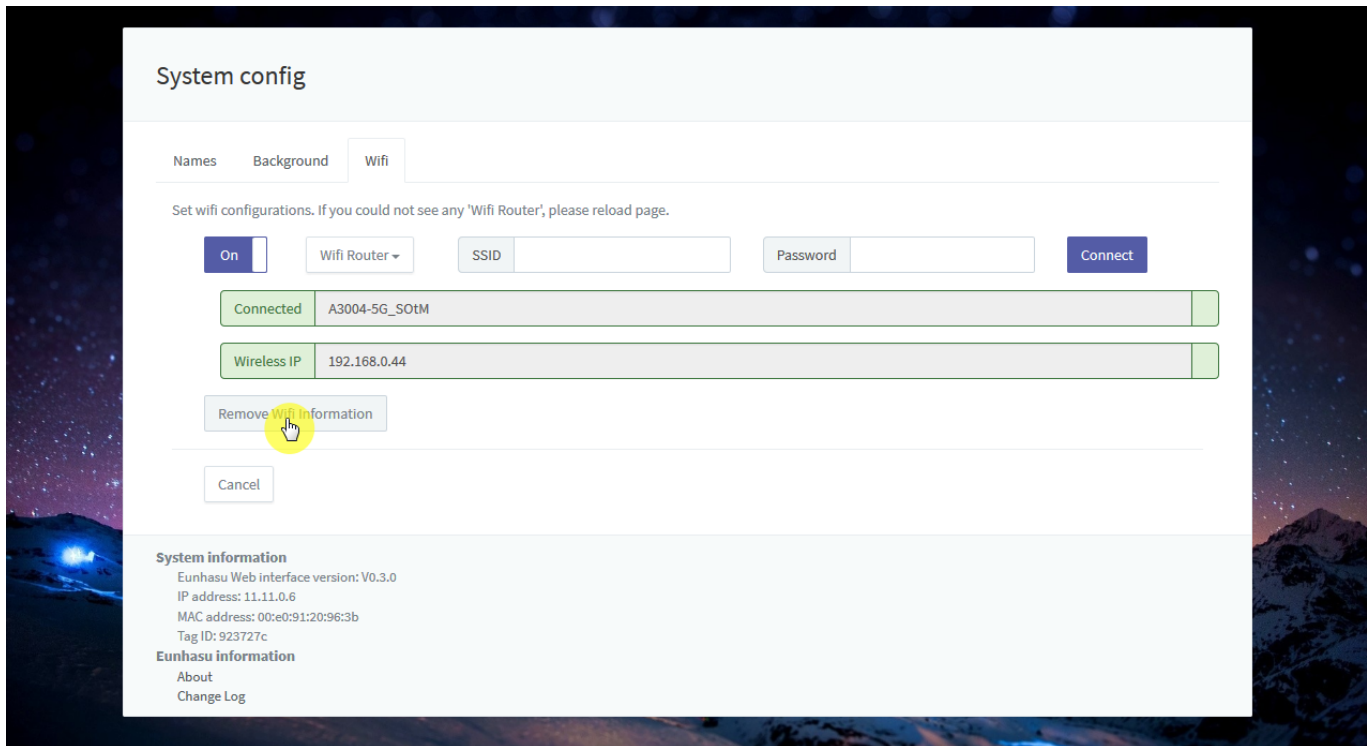



IP



'Remove Wifi Information'

AP 가





- Eunhasu V0.3.0
- 가
- 가
- 5Ghz

Last Updated: 2017/03/13 01:32

From:  
<https://www.wiki.sotm-audio.com/> - **SOTM docs**

Permanent link:  
[https://www.wiki.sotm-audio.com/doku.php?id=ko:how\\_to\\_use\\_wifi\\_in\\_eunhasu&rev=1489383124](https://www.wiki.sotm-audio.com/doku.php?id=ko:how_to_use_wifi_in_eunhasu&rev=1489383124)

Last update: **2017/03/13 01:32**

