

- SMS-200 V0.3.0 SMS-1000SQ Eunhasu V0.3.0
- Wifi dongle
 - RTL8812AU

Simple Instruction

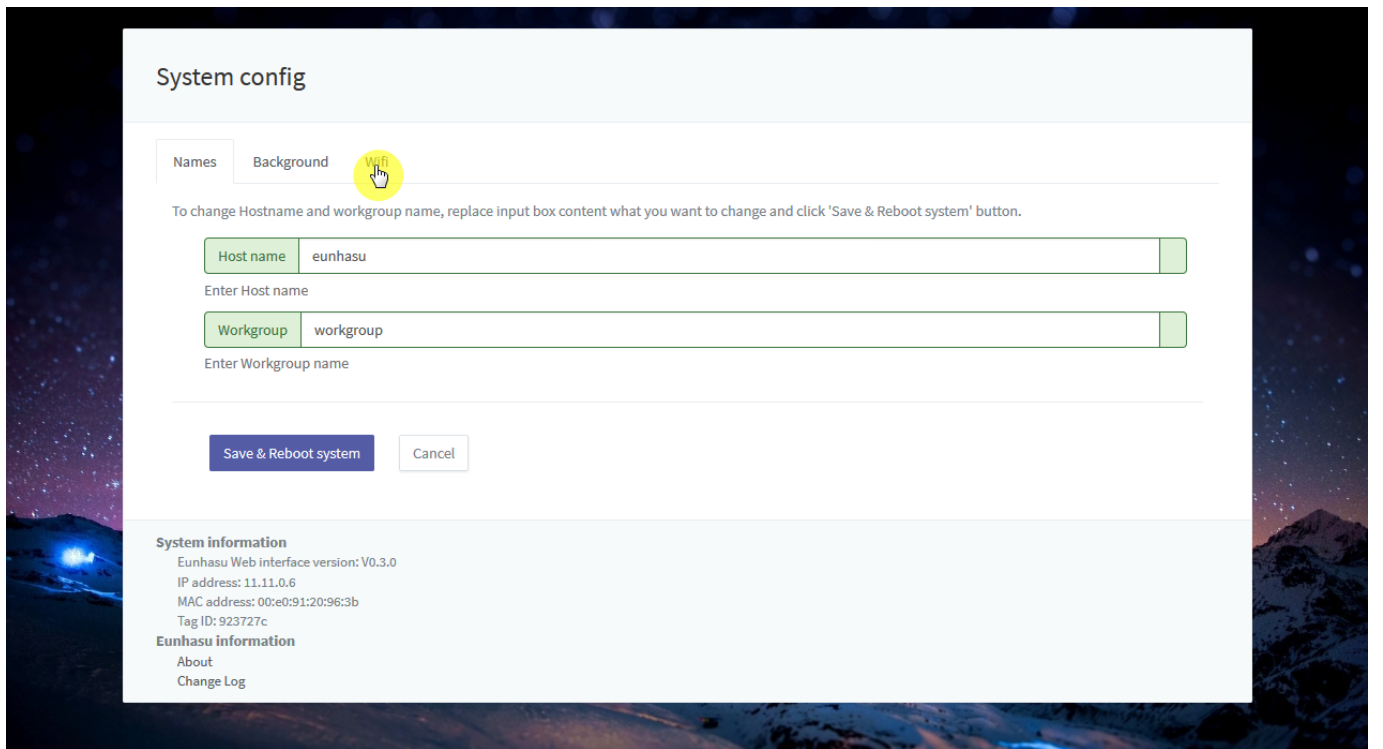
USB

Wifi USB

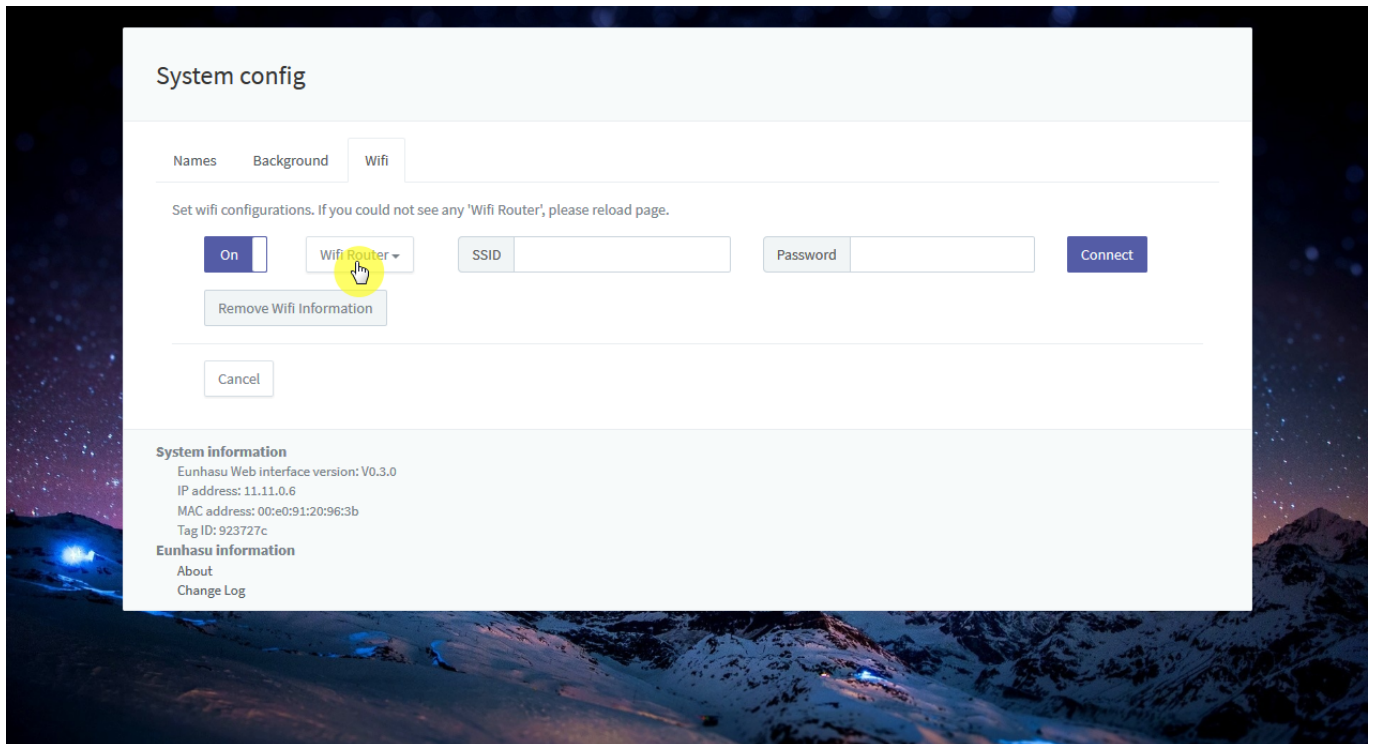


[System config](#)

'Wifi'

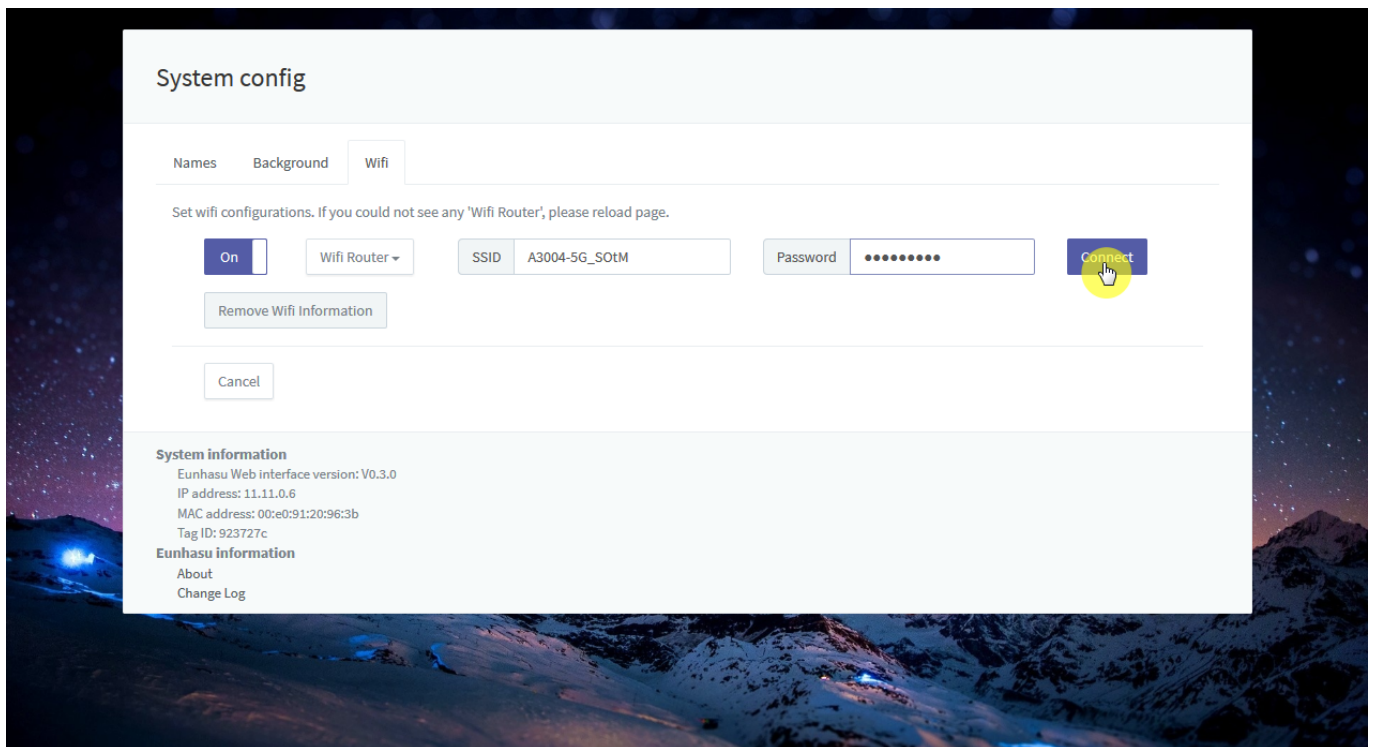


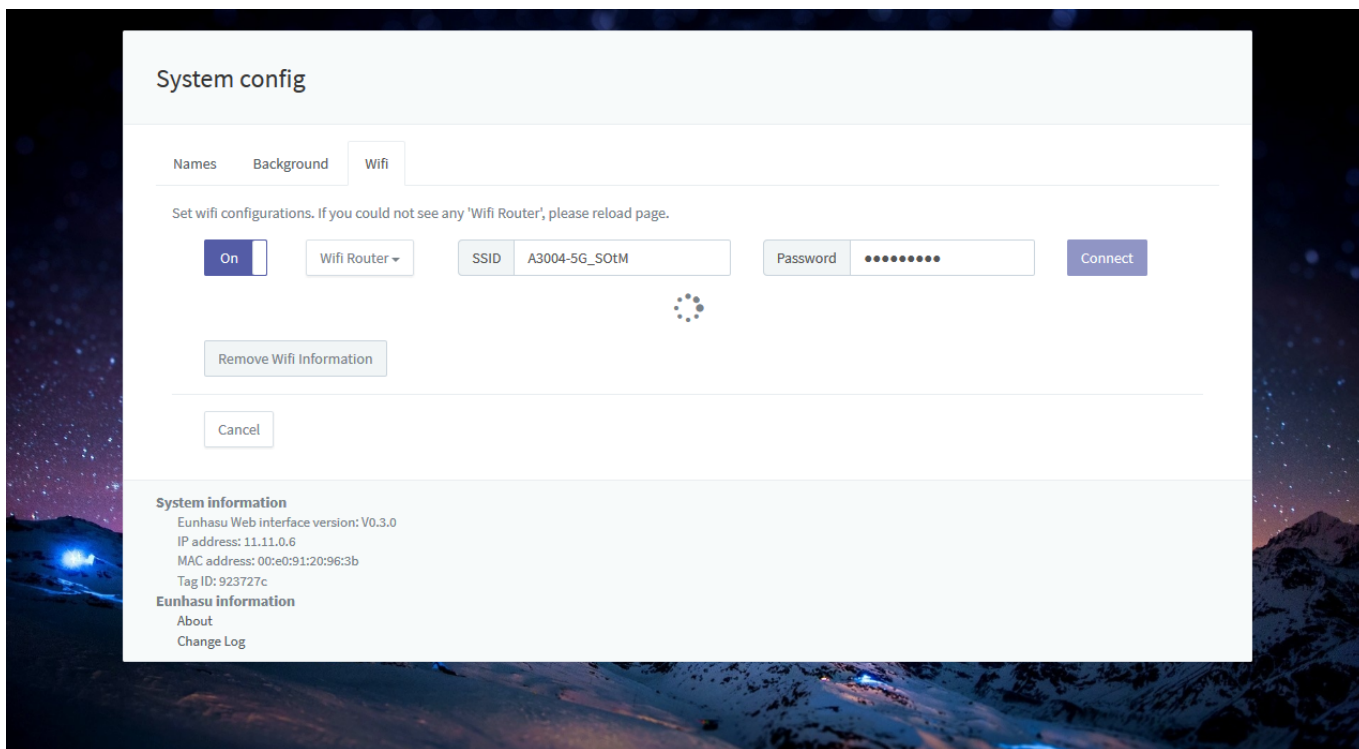
'Wifi Router'



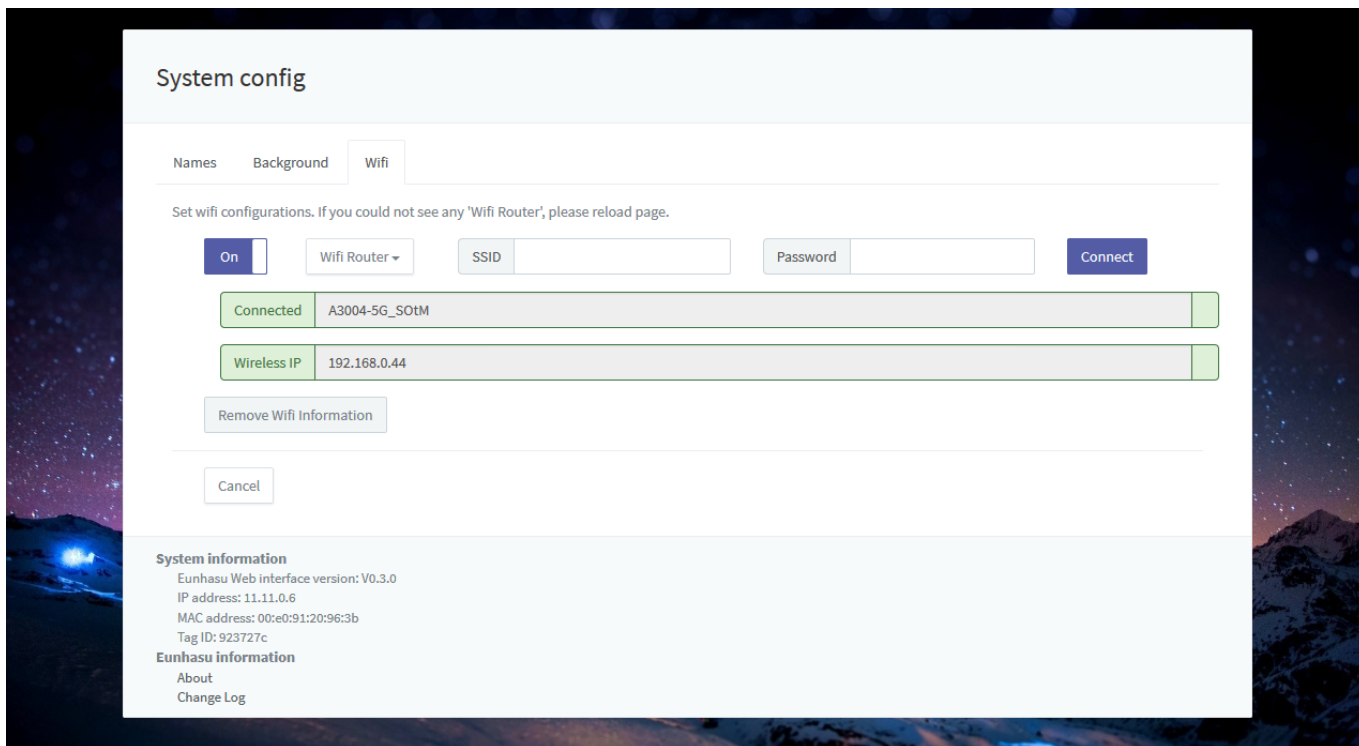


'Connect'



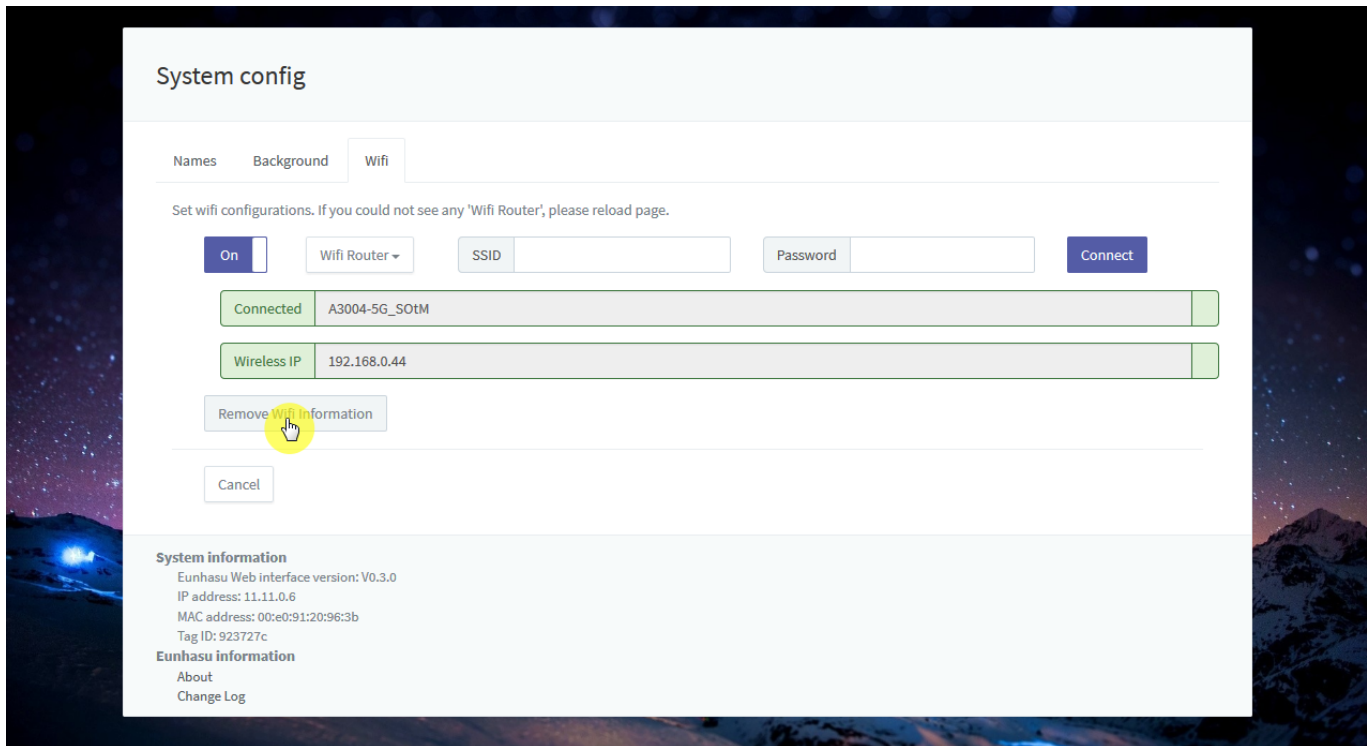



IP



'Remove Wifi Information'

AP 가





- Eunhasu V0.3.0
-
-

가

가

Last Updated: 2017/01/24 21:14

From:
<https://www.wiki.sotm-audio.com/> - **SOTM docs**

Permanent link:
https://www.wiki.sotm-audio.com/doku.php?id=ko:how_to_use_wifi_in_eunhasu&rev=1485310488

Last update: **2017/01/24 21:14**

