

- sDP-1000EX Main Audio USB
- 2가

가

sDP-1000EX Main

- sDP-1000EX Main

[sDP-1000Ex_V2.0a_20190607.hex](#)

- Flip

[Flip 3.4.7 software](#)

sDP-1000EX

sDP-1000EX PC USB
DFU

sDP-1000EX Audio USB

- OLED
- OLED



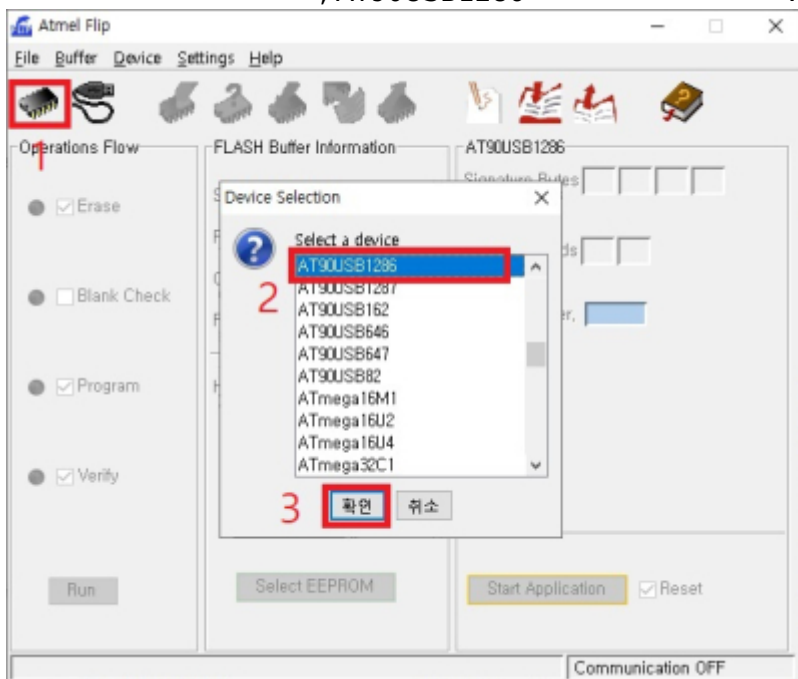
Flip

Flip

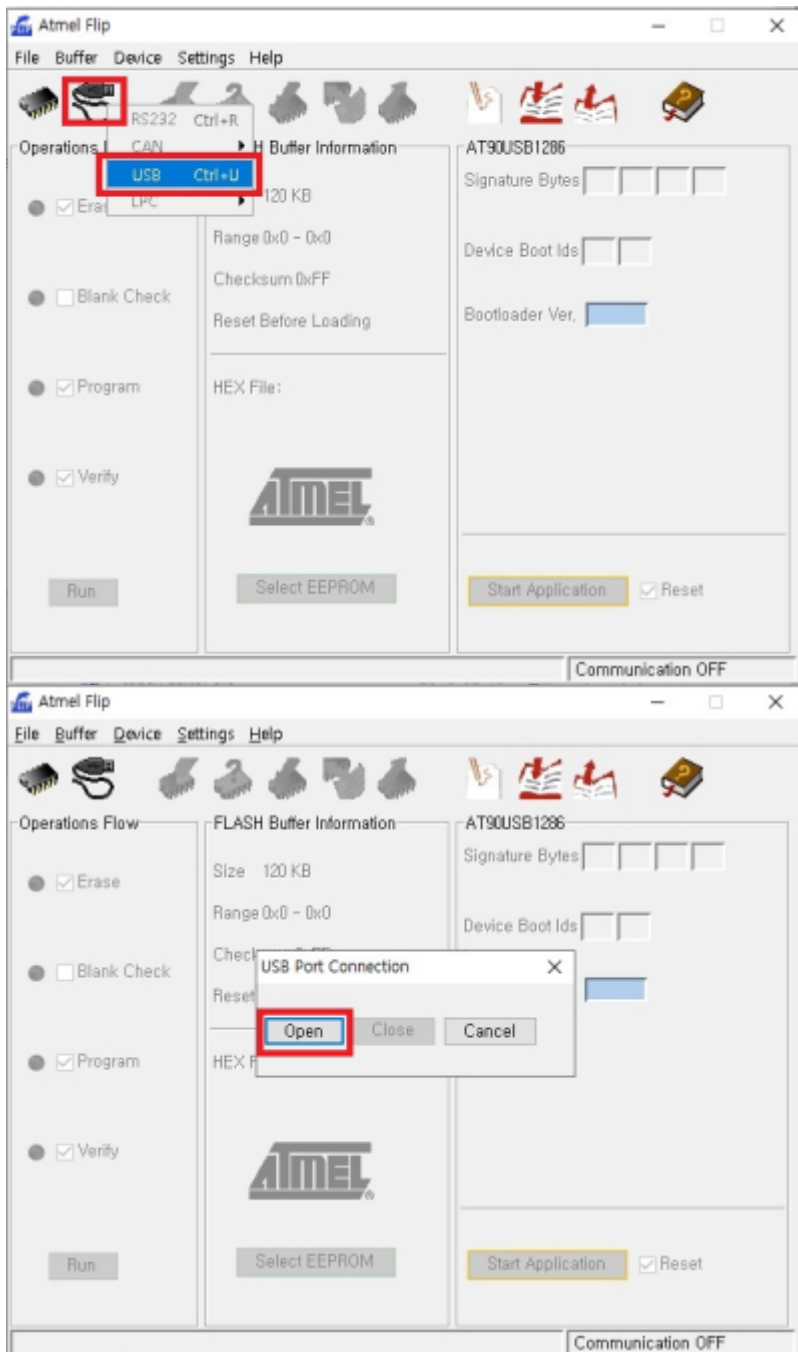
Flip



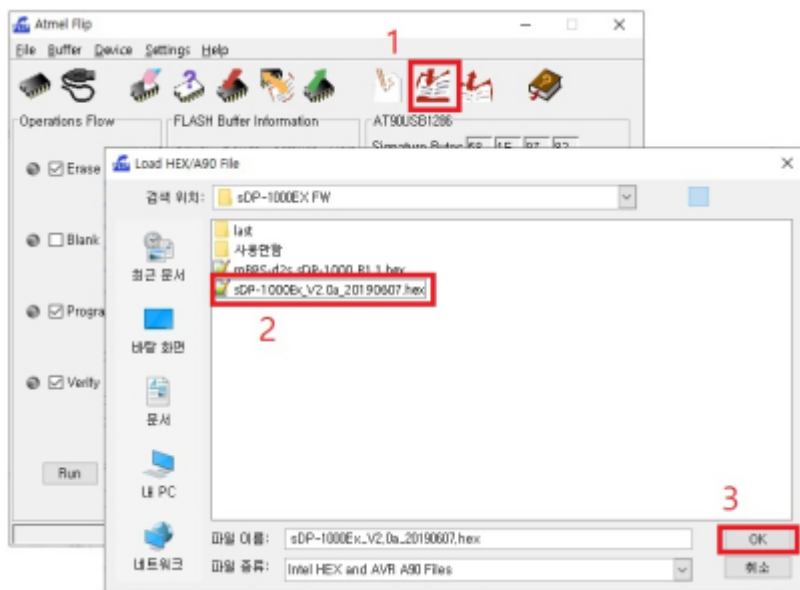
, AT90USB1286



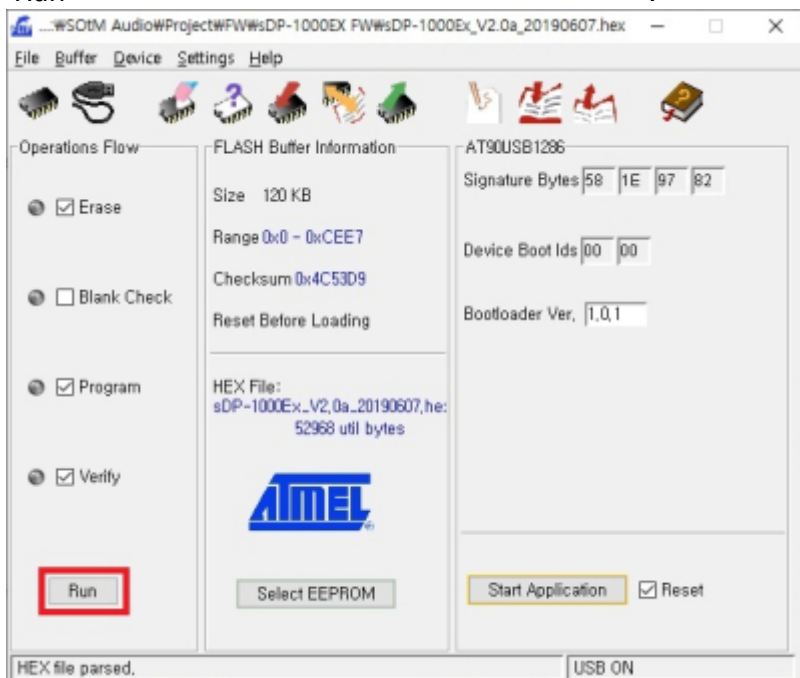
USB Port Connection 'Open'



'Load Hex File



'Run'



- 가 , sDP-1000EX Audio USB
- Audio
- Audio , OLED가
 - , OLED ,



Audio USB

- Audio USB

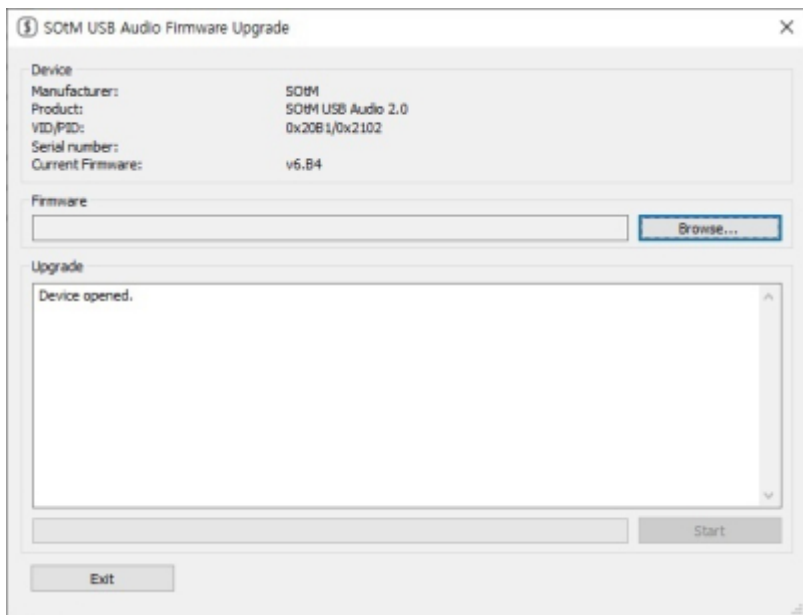
[sDP-1000EX_USB_V6.C1_20190604.bin](#)

- SotM 가

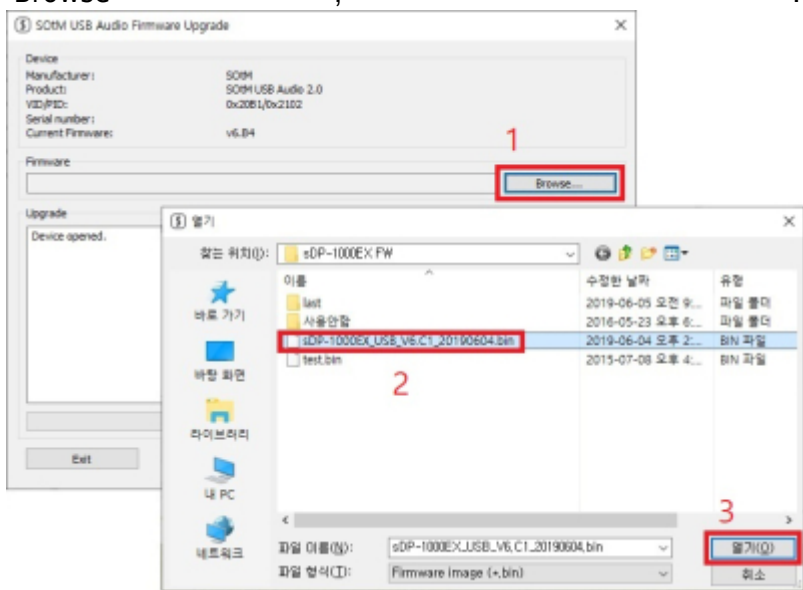
[SotM USB Audio 2.0 Driver v2.23.0](#)

SotM USB Audio Firmware Upgrade

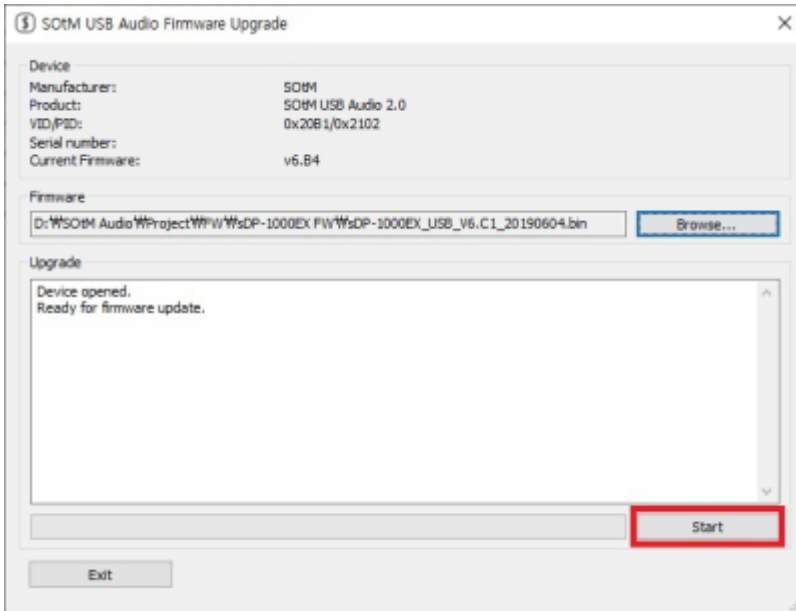
1. sDP-1000EX PC USB sDP-1000EX
2. SotM USB Audio Firmware Upgrade



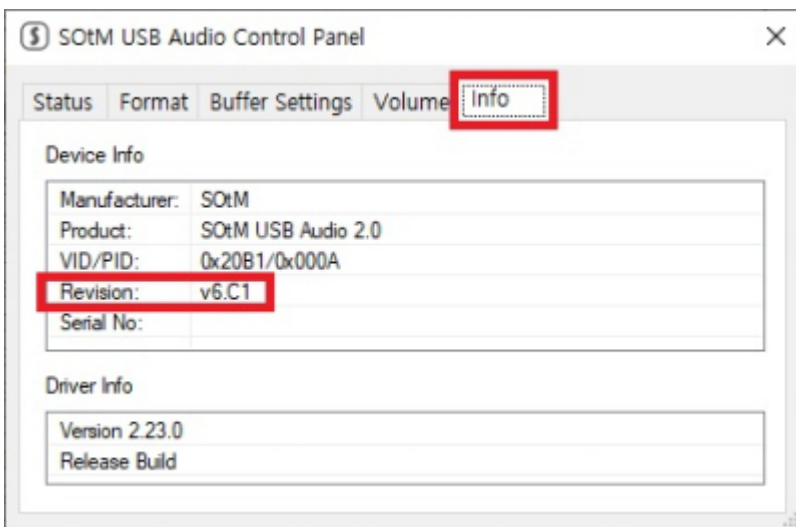
'Browse



'Start'



가 , SOTM USB Audio Control Panel sDP-1000EX



sDP-1000EX FW

- [sDP-1000Ex_V2.0a_20190607.hex](#)
- [sDP-1000EX_USB_V6.C1_20190604.bin](#)

- [Flip 3.4.7 software](#)
- [SOTM USB Audio 2.0 Driver v2.23.0](#)

Last update: 2019/06/23 22:14 ko:how_to_upgrade_sdp-1000ex_fw https://www.wiki.sotm-audio.com/doku.php?id=ko:how_to_upgrade_sdp-1000ex_fw&rev=1561342443

From: <https://www.wiki.sotm-audio.com/> - **SOTM docs**

Permanent link: https://www.wiki.sotm-audio.com/doku.php?id=ko:how_to_upgrade_sdp-1000ex_fw&rev=1561342443

Last update: **2019/06/23 22:14**

