

# Eunhasu

## Eunhasu

Eunhasu Web GUI

. Linux OS

Web GUI

PC

## Eunhasu

- Web GUI
  - Easy system configuration
  - Selectable music player applications
  - Selectable and configurable USB audio devices
  - Network share folder and USB storage device setting
- Roon Ready
- Roon Server [sMS-1000SQ](#)
- MinimServer
- DLNA audio renderer, OpenHome support
- MPD (Music Player Daemon)
- LMS (Logitech Media Server)
- Squeezelite
- HQPlayer Network Audio Adapter
- Shairport
- Multi-zone network playback

## Eunhasu

- [sMS-200](#)
- [sMS-200ultra](#)
- [sMS-1000SQ](#)

## sMS-200

- [Roon Ready](#)
- [Squeezelite / Logitech Media Server](#)
- [MPD / DLNA renderer](#)
- [HQPlayer NAA](#)

- [Shairport](#)
- [LibreSpot](#)

## sMS-1000SQ

- [Roon Server](#)
- [Squeezelite / Logitech Media Server](#)
- [MPD / DLNA renderer](#)
- [HQPlayer NAA](#)
- [Shairport](#)
- [LibreSpot](#)
- [MinimServer](#)
- [CD Ripping](#)

# Eunhasu

## Eunhasu Web GUI

PC	<a href="http://eunhasu">http://eunhasu</a>	.
Apple®	<a href="http://eunhasu.local">http://eunhasu.local</a>	.
	<a href="http://sotm-audio.com/my">http://sotm-audio.com/my</a>	가
	<a href="http://sotm-audio.com/my">http://sotm-audio.com/my</a>	IPv4 .
sMS-1000SQ) IP	Eunhasu가	( : sMS-200
IP	<a href="http://xxx.xxx.xxx.xxx">http://xxx.xxx.xxx.xxx</a>	.
Eunhasu Web GUI	.	.



Web GUI

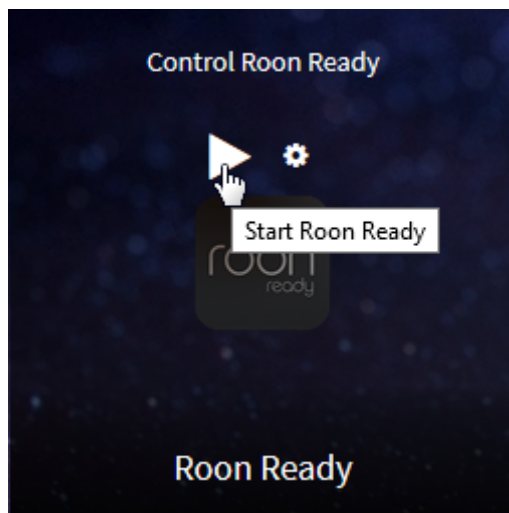
( )



Roon Ready

Roon Ready

'Active'



가

'Active'

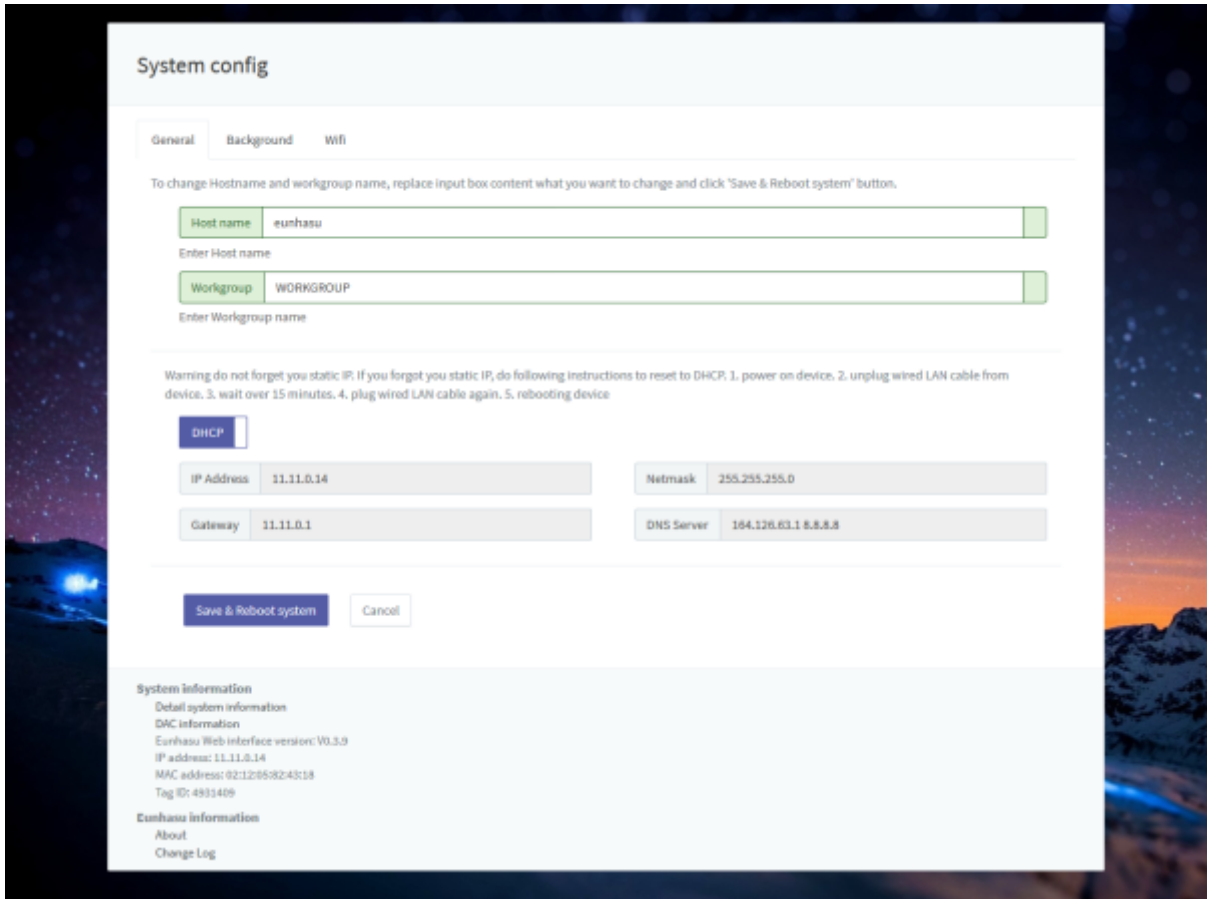
가

. Roon Ready



 가 , , .

, , Wifi , , , .



- **Host name:** Host name Eunhasu 가
- **Workgroup:** "WORKGROUP" 가
- **IP:** /



- **Save & Reboot system:**
- **Cancel:**

IP . . . . . IP

. . . . . micro SD

1. . . . . .
2. . . . . LAN
3. 5 . . . . .
4. LAN . . . . . (Static IP . . . . . , . . . . . DHCP
5. )

### CPU Frequency

CPU frequency                    sms-200, sms-200ultra, sMB-Q370                    Eunhasu firmare version no. 5.51  
     가                    . sms-1000SQ                    BIOS                    SpeedStep                    enable  
     가



Eunhasu firmware version no. 5.51

disable

. jpeg, png



Wifi

Wifi

# USB



- NAME: Logitech Media Server MPD  
가
- PATH:
- ID: 가
- PW: 가
- Save & Use:
- Save:
- Remove:
- Automatic USB storage mount: USB , 2 USB
  - USB 가 Logitech Media Server MPD  
USB1, USB2
- Save changes: 가
- Cancel:

 Save changes  
가

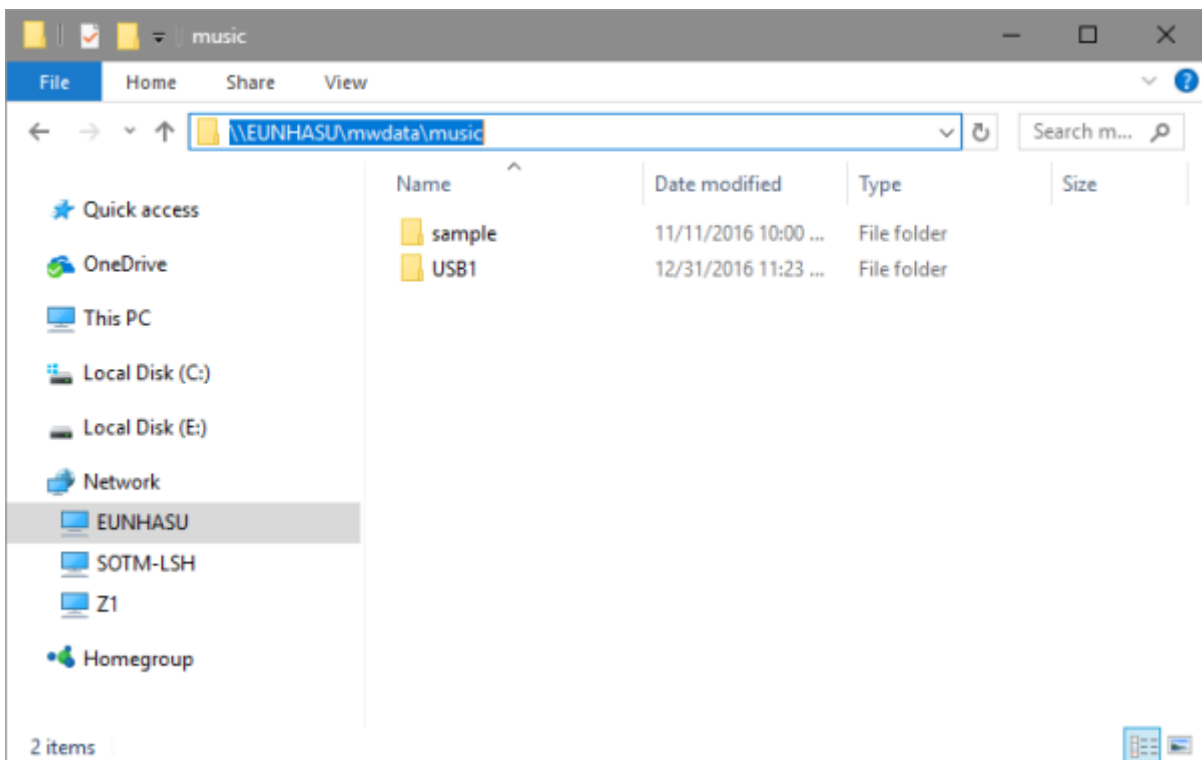
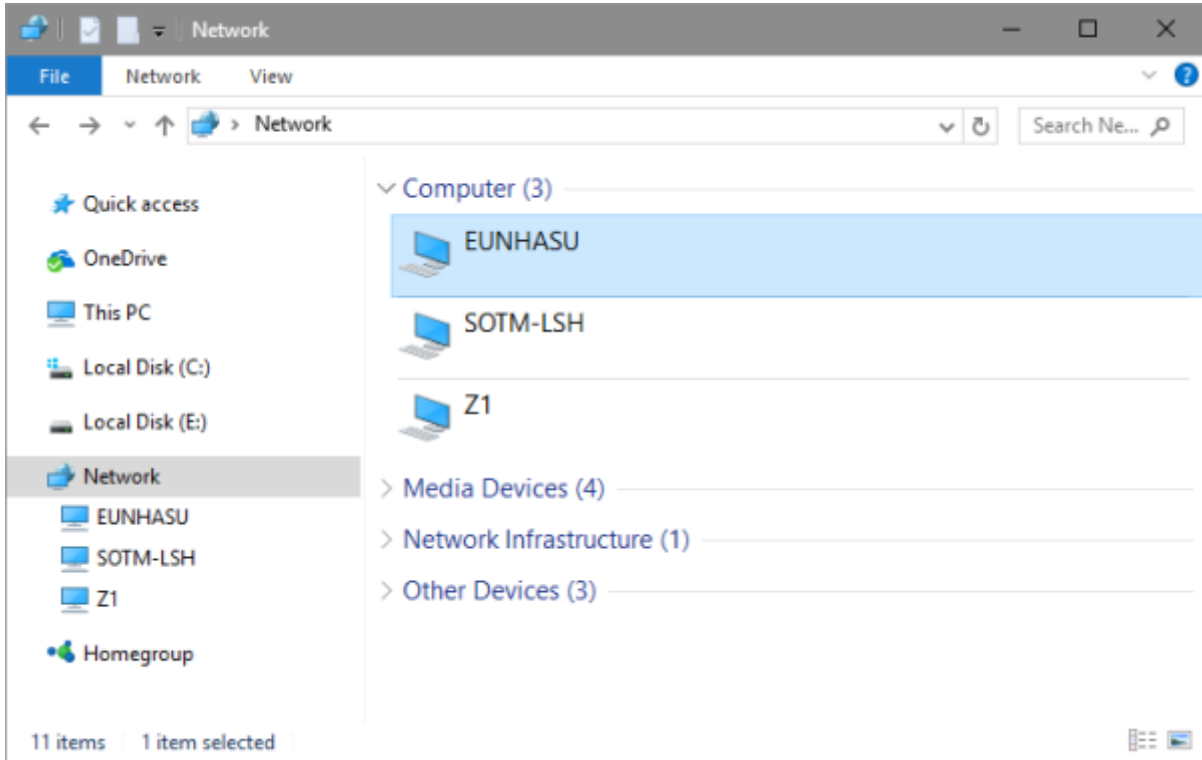
## Eunhasu

## Windows

'EUNHASU'

Eunhasu 가

Eunhasu 가

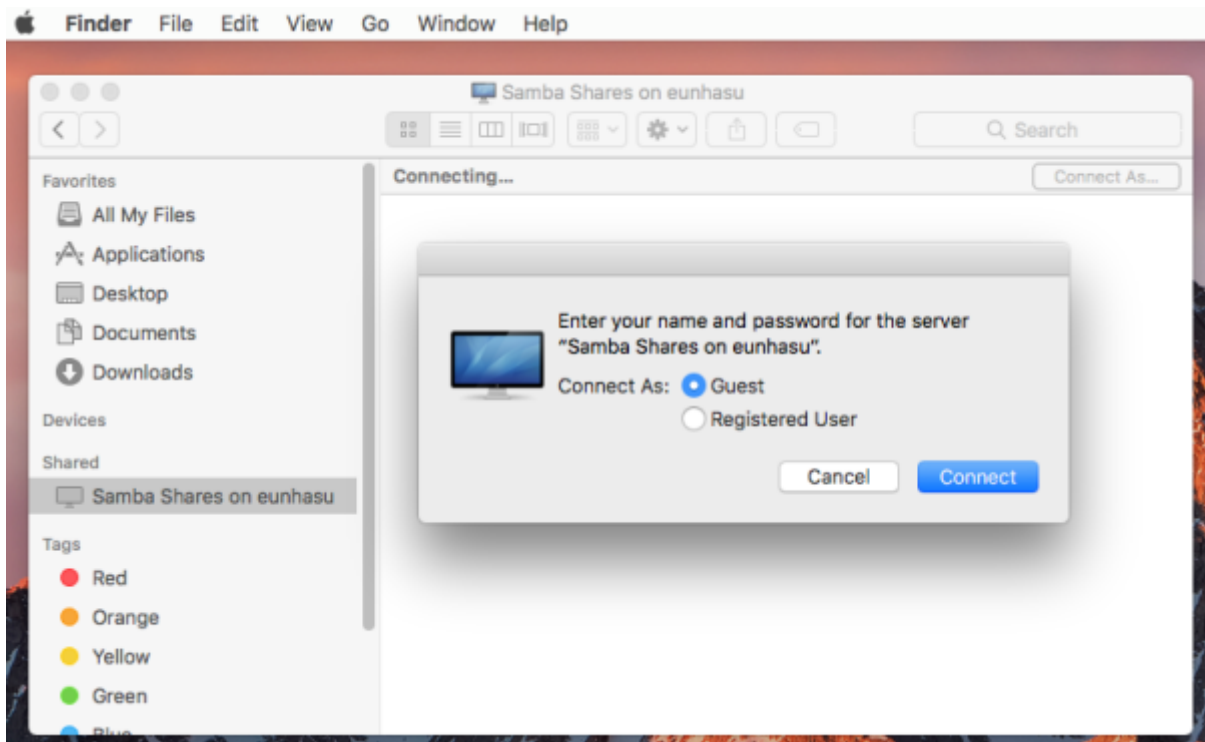


mwdata



### Mac OS

Finder Eunhasu Eunhasu , 'Guest'



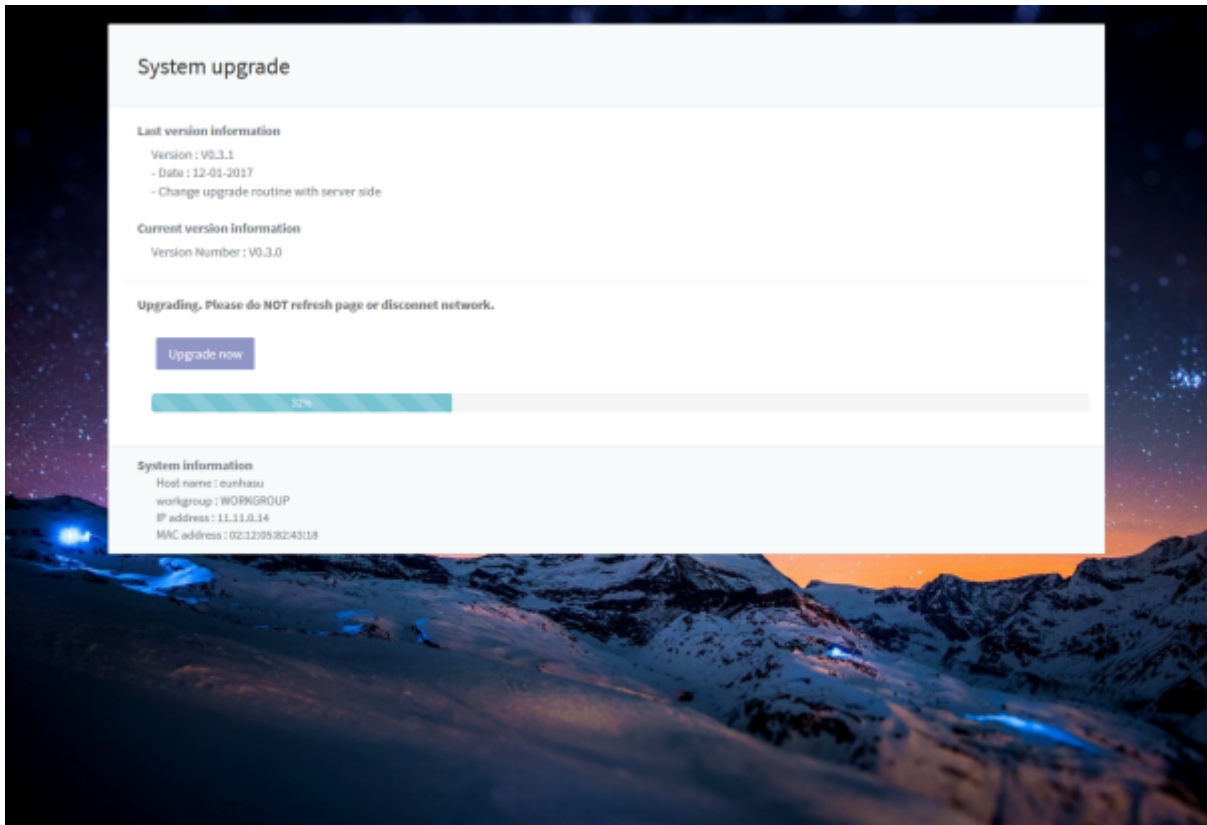


- Upgrade now:
- Cancel:





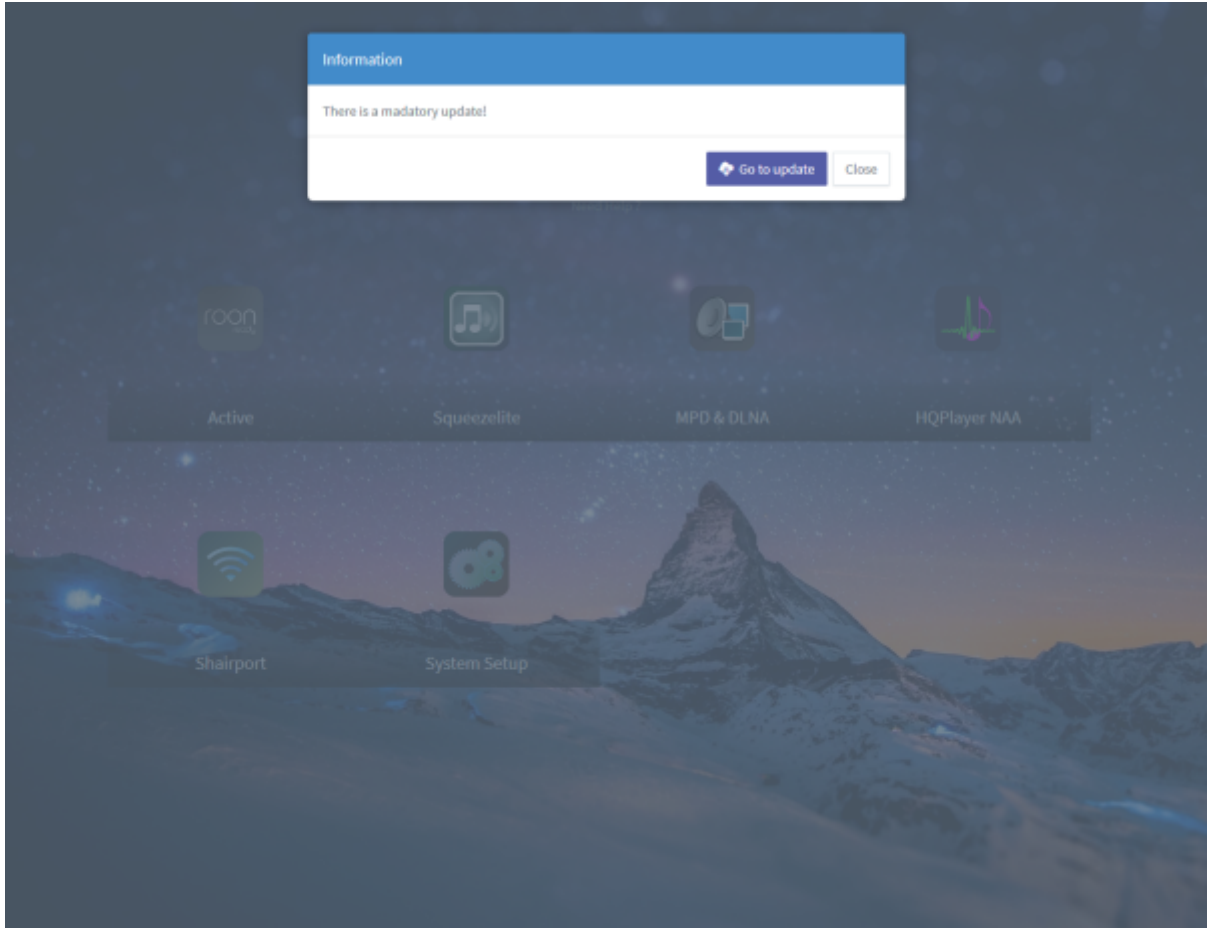
가



, "System Setup"



가

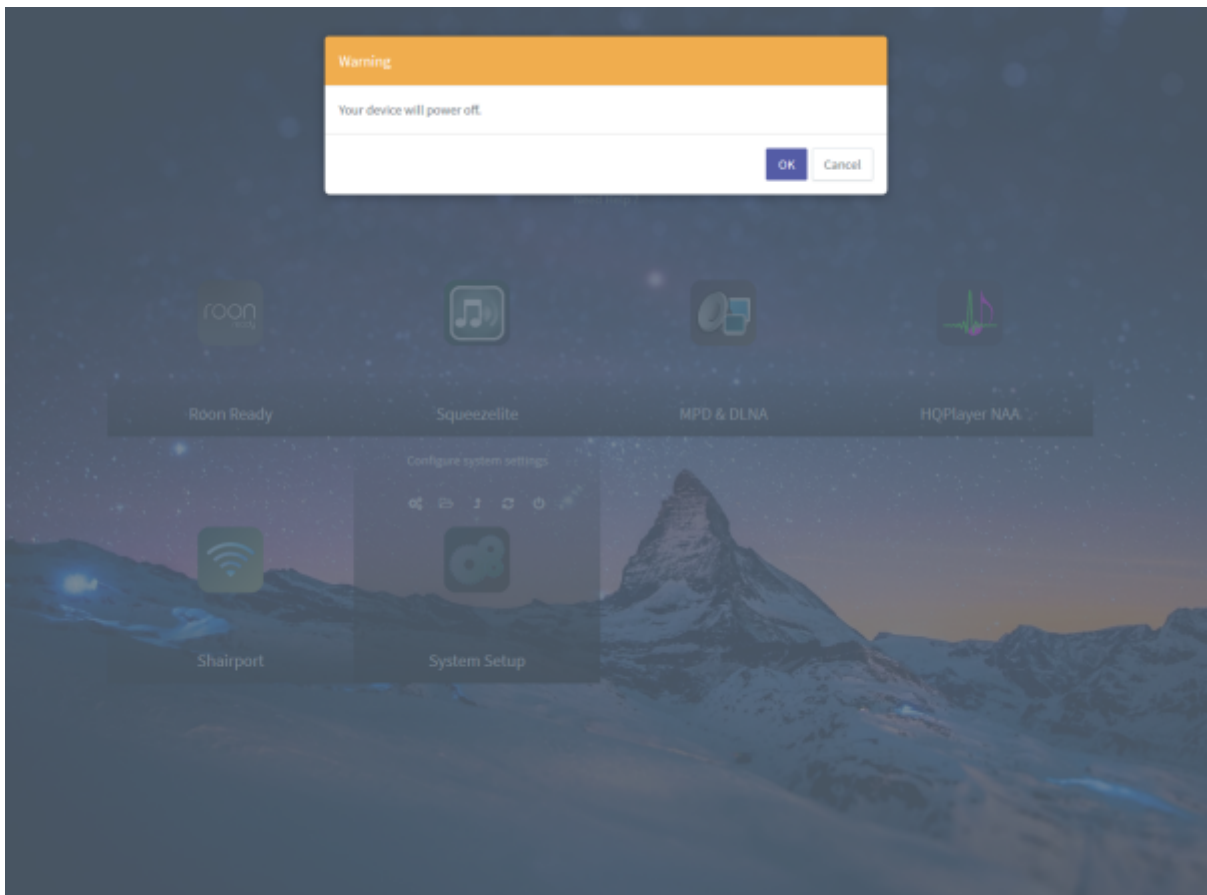



2~3



'power off'

, 'power off'



• Eunhasu 가 PC  
 • USB audio output  
 • 2TB  
 • USB USB2.0 1 USB .2  

 • Eunhasu IPv4 , IPv6  
 • 가 , mwdata 100%  
 • exFAT Eunhasu V0.2.7  
 • 가  
 • 1  
 • Squeezelite, MPD/DLNA 가

가

### mSD

sMS-200(or sMS-200ultra) mSD

- [sMS-200 mSD](#)

### sMS-1000SQ Eunhasu

sMS-1000SQ Eunhasu

- [sMS-1000SQ Eunhasu](#)

가

### Native DSD

### DAC

Eunhasu

Native DSD

DAC

Model	USB ID
Playback Designs	0x23ba

<b>Model</b>	<b>USB ID</b>
AURALiC VEGA	0x1511, 0x0037
Wyred 4 Sound DAC-2 DSD	0x20b1, 0x0002
iFi Audio micro/nano iDSD	0x20b1, 0x3008
Matrix Audio X-Sabre	0x20b1, 0x2008
Matrix Audio Quattro II	0x20b1, 0x302a
Matrix Audio Mini-i Pro	0x20b1, 0x300a
Matrix Audio X-SPDIF 2	0x20b1, 0x2004
Pro-Ject Pre Box S2 Digital	0x2772, 0x0230
OPPO HA-1	0x22d9, 0x0416
LH Labs Geek Out 1V5	0x2522, 0x0007
OPPO Sonica	0x22d9, 0x0436
LH Labs VI DAC Infinity	0x2522, 0x0012
LH Labs Geek Pulse X Inifinity 2V0	0x2522, 0x0009
Mytek Brooklyn DAC	0x25ce, 0x001f
Mytek Brooklyn DAC+	0x27f7, 0x1301
Mytek Manhattan DAC	0x25ce, 0x0021
Mytek Liberty DAC	0x25ce, 0x801e/0x001e
NuPrime DAC-10	0x16b0, 0x06b2
NuPrime Audio HD-AVP/AVA	0x16d0, 0x06b4
NuPrime IDA-8	0x16d0, 0x09d8
NuPrime Audio DAC-9	0x16d0, 0x09db
ENCORE mDSD	0x16d0, 0x09dd
Bryston BDA3	0x1db5, 0x0003
WavelIO USB Audio 2.0	0x20a0, 0x4143
Gustard DAC-X20U	0x20b1, 0x000a
Denafrips DAC	0x20b1, 0x2005
DIYINHK DSD DXD 384kHz USB to I2S/DSD	0x20b1, 0x2009
OKTO RESEARCH DAC8PRO	0x20b1, 0x2009
JLsounds I2SoverUSB	0x20b1, 0x2023
Engineered Electronics Stereo Playback Interface	0x20b1, 0x300f
Eastern El. MiniMax Tube DAC Supreme	0x20b1, 0x3021
Aune X1S 32BIT/384 DSD DAC	0x20b1, 0x3023
Unison Research Unico CD Due	0x20b1, 0x302d
Holo Springs Level 3 R2R DAC	0x20b1, 0x3036
Soekris dac1101	0x20b1, 0x3073
Singxer F-1 converter board	0x20b1, 0x3086
CH Precision C1 DAC	0x20b1, 0x307b
OPPO HA-2	0x22d9, 0x0426
HDTA Serenade DSD	0x22e1, 0xca01
PS Audio NuWave DAC	0x2616, 0x0106
Audiolab 8300 CDQ	0x2622, 0x0041
Audiolab M-DAC+	0x2622, 0x0041
Mutec MC3+ USB	0x29a2, 0x0086
Cayin iDAC-6	0x2d87, 0x000a
MSB Technology	0x6b42, 0x0042

<b>Model</b>	<b>USB ID</b>
W4S DAC-2v2SE	0x27f7, 0x3002
Amanero Combo384	0x16d0, 0x071a
JAVS X6-DAC	0x2573, 0x8201
iFi Neo iDSD	0x20b1, 0x3009
iFi Pro iDSD	0x20bi, 0x3008
OPPO UDP-205	0x22d9, 0x0461
Topping D50, D70, D30 Pro	0x152a, 0x8750
Hegel HD12 DSD	0x0d8c, 0x0316
Furutech ADL Stratos	0x16d0, 0x0733
M2Tech Young MkIII	0x249c, 0x9326
M2Tech hiFaceTWO	0x249c, 0x930b
W4S DAC-2v2SE	0x27f7, 0x3002
Rotel 1592	0x278b, 0x5100
sDP-1000EX	0x30b1, 0x2102
T+A USB HD Audio 1	0x2ab6, Any
T+A USB HD Audio 2	
T+A SD 3100 HV	
Denon DA-300USB	0x154e, 0x1003
Denon DCD-1500RE	0x154e, 0x1002
Denon XMOS USB Audio Device	0x154e
Marantz HD-DAC1, Marantz NA11-S	0x154e, 0x3005
Marantz SA-14S1	0x154e, 0x3006
Luxman DA-06	0x1852, 0x5065
TEAC UD-501/UD-501V2/UD-503/NT-503	0x0644, 0x8043
Esoteric D-05X	0x0644, 0x8044
TEAC UD-301	0x0644, 0x804a
Mola Mola Makua	0x20b1, 0x3089
Peachtree nova500	0x29c5, 0x0022
Gustard USB audio GSD audio	0x292b, 0xc4b3
Lindemann USB Audio 2.0	0x2305, 0x0010
D&M holdings Inc. PMA-2500NE	0x154e, 0x1007
Quad Artera DAC	0x2622, 0x0002
Quad XU1 Audio	0x2622, 0x0001
Mission XU1 Audio	0x2622, 0x0010
Luxman XU1 Audio	0x2622, 0x0020
Wharfedale XU1 Audio	0x2622, 0x0030
Audiolab XU1 Audio	0x2622, 0x0040
Ekco XU1 Audio	0x2622, 0x0050
IAG XU1 Audio	0x2622, 0x0060
Mission Audio	0x2622, 0x0011
Luxman Audio	0x2622, 0x0021
Wharfedale Audio	0x2622, 0x0031
Ekco Audio	0x2622, 0x0051
IAG Audio	0x2622, 0x0061
Accuphase DC-950 / DP-560 / DC-37 / DP-430 / DAC-50	0x21ed, 0xd37a

Model	USB ID
Auralic Vega G2.1	0x1511, 0x0052
Marantz SA10S1	0x154e, 0x3008
ARCAM irDAC II	0x25c4
DA2 McIntosh	0x2afd, 0x000b
Aqua USB Audio 384	0x31c1
Using XMOS XU208 chipset	0x25d0, 0x0002
Auralic Sirius G2.1	0x1511, 0x0058
MCS Evolution DAC-2	0x16d0, 0x0e5
NuPrime Evolution DAC-2	0x16d0, 0x0e5
Accuphase DAC-60	0x21ed, 0xd75a

DAC가 Eunhasu

DAC infomation

Native DSD DAC

DAC

192.168.0.126/sysconfig.php

General Background Wifi

To change Hostname and workgroup name, replace input box content what you want to change and click 'Save & Reboot system' button.

Host name

Enter Host name

Workgroup

Enter Workgroup name

Warning do not forget you static IP. If you forgot you static IP, do following instructions to reset to DHCP. 1. power on device. 2. unplug wired LAN cable from device. 3. wait over 15 minutes. 4. plug wired LAN cable again. 5. rebooting device.

ETHERNET 0  DHCP enp1s0 - 00:22:4D:B4:DA:42

IP Address  Netmask

Gateway  DNS Server

IPv6 protocol  Enable

Save & Reboot system Reboot & Check disk Cancel

System information **Click**

Detail system information

DAC information

Eunhasu web interface version : V0.4.19

Network Information

enp1s0 || 00:22:4D:B4:DA:42 - 192.168.0.126 - DHCP - UP

Tag ID : eb269c4

Eunhasu information

About

Change Log

DAC

DAC USB ID

```

**** List of PLAYBACK Hardware Devices ****
card 0: Audio [iFi (by AMR) HD USB Audio], device 0: USB Audio [USB Audio]
  Subdevices: 1/1
  Subdevice #0: subdevice #0

```

```

Bus 004 Device 001: ID 1d6b:0001 Linux Foundation 1.1 root hub
Bus 002 Device 003: ID 20b1:3008 XMOS Ltd
Bus 002 Device 001: ID 1d6b:0002 Linux Foundation 2.0 root hub
Bus 001 Device 001: ID 1d6b:0001 Linux Foundation 1.1 root hub
Bus 003 Device 004: ID 0781:5583 SanDisk Corp.
Bus 003 Device 002: ID 05e3:0610 Genesys Logic, Inc. 4-port hub
Bus 003 Device 001: ID 1d6b:0002 Linux Foundation 2.0 root hub

```

```

0 [Audio          ]: USB-Audio - iFi (by AMR) HD USB Audio
                      iFi (by AMR) iFi (by AMR) HD USB Audio at usb-1c1c000.usb-1, high speed

```

iFi (by AMR) iFi (by AMR) HD USB Audio at usb-1c1c000.usb-1, high speed : USB Audio

Native DSD DAC	USB ID가	Native DSD	DAC
	USB ID가	info@sotm-audio.com	DAC
Eunhasu	Native DAC		

From:  
<https://www.wiki.sotm-audio.com/> - **SOTm docs**

Permanent link:  
<https://www.wiki.sotm-audio.com/doku.php?id=ko:eunhasu:start&rev=1711004205>

Last update: **2024/03/21 02:56**

