

Eunhasu

Eunhasu

Eunhasu Web GUI

. Linux OS

Web GUI

PC

Eunhasu

- Web GUI
 - Easy system configuration
 - Selectable music player applications
 - Selectable and configurable USB audio devices
 - Network share folder and USB storage device setting
- Roon Ready
- Roon Server [sMS-1000SQ](#)
- MinimServer
- DLNA audio renderer, OpenHome support
- MPD (Music Player Daemon)
- LMS (Logitech Media Server)
- Squeezelite
- HQPlayer Network Audio Adapter
- Shairport
- Multi-zone network playback

Eunhasu

- [sMS-200](#)
- [sMS-200ultra](#)
- [sMS-1000SQ](#)

sMS-200

- [Roon Ready](#)
- [Squeezelite / Logitech Media Server](#)
- [MPD / DLNA renderer](#)
- [HQPlayer NAA](#)

- [Shairport](#)
- [LibreSpot](#)

sMS-1000SQ

- [Roon Server](#)
- [Squeezelite / Logitech Media Server](#)
- [MPD / DLNA renderer](#)
- [HQPlayer NAA](#)
- [Shairport](#)
- [LibreSpot](#)
- [MinimServer](#)
- [CD Ripping](#)

Eunhasu

Eunhasu Web GUI

| | | |
|-----------------|---|-------------|
| PC | http://eunhasu | . |
| Apple® | http://eunhasu.local | . |
| | http://sotm-audio.com/my | 가 |
| | http://sotm-audio.com/my | IPv4 . |
| sMS-1000SQ) IP | Eunhasu가 | (: sMS-200 |
| IP | http://xxx.xxx.xxx.xxx | . |
| Eunhasu Web GUI | . | . |



Web GUI

()



Room Ready

Room Ready

'Active'



가

'Active'

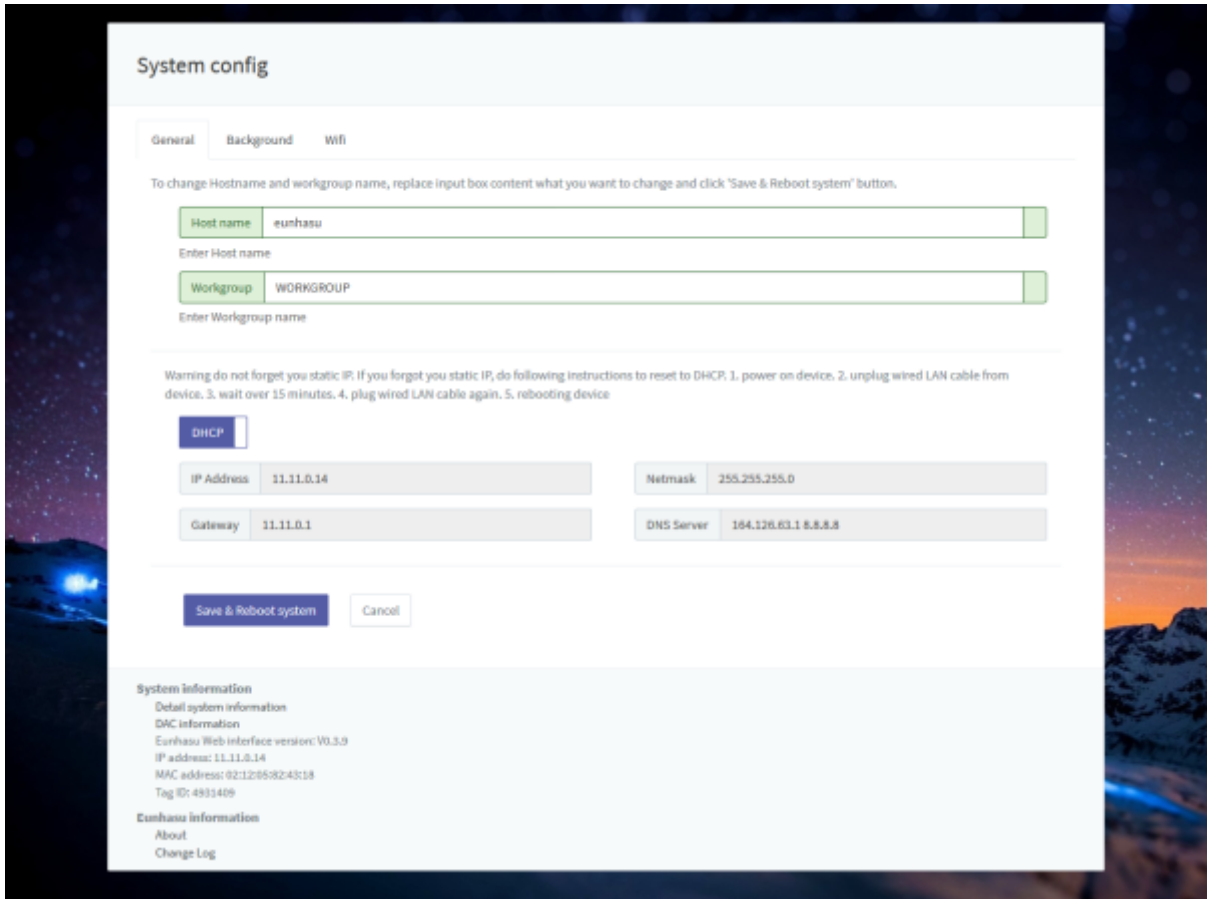
가

. Room Ready



 가 , , .

, , Wifi , , , .



- **Host name:** Host name Eunhasu 가
- **Workgroup:** "WORKGROUP" 가
- **IP:** /



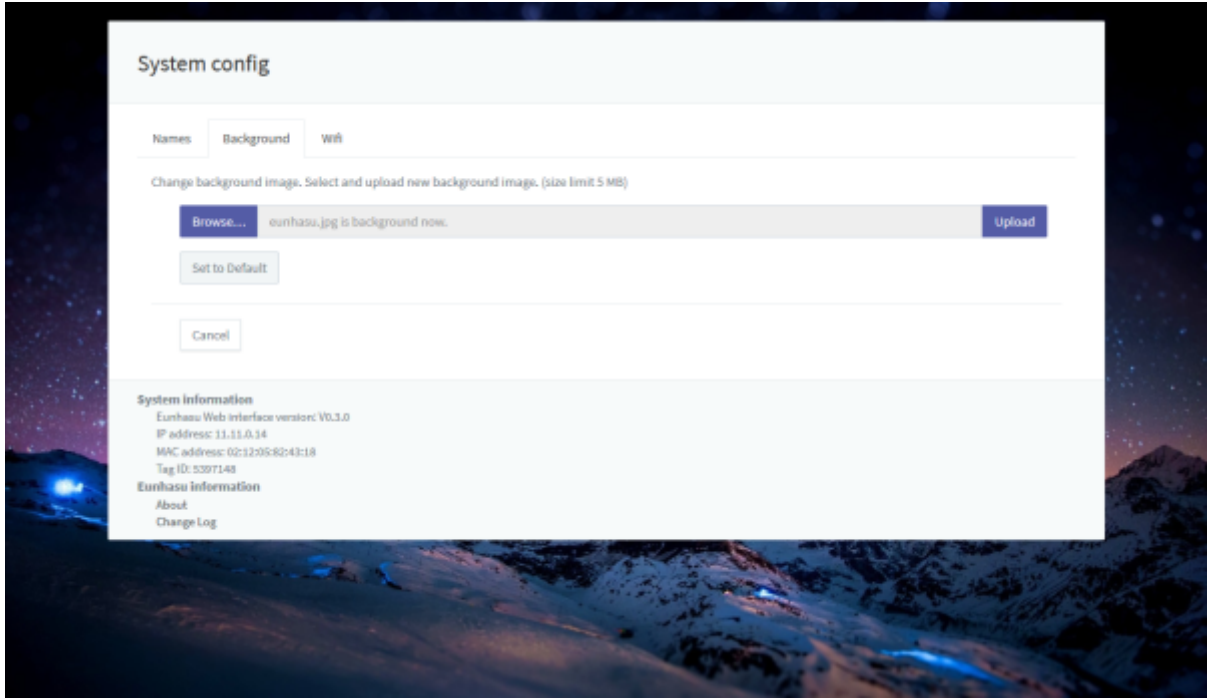
- **Save & Reboot system:**
- **Cancel:**

IP IP

. micro SD

1.
2. LAN
3. 10
4. LAN
5.

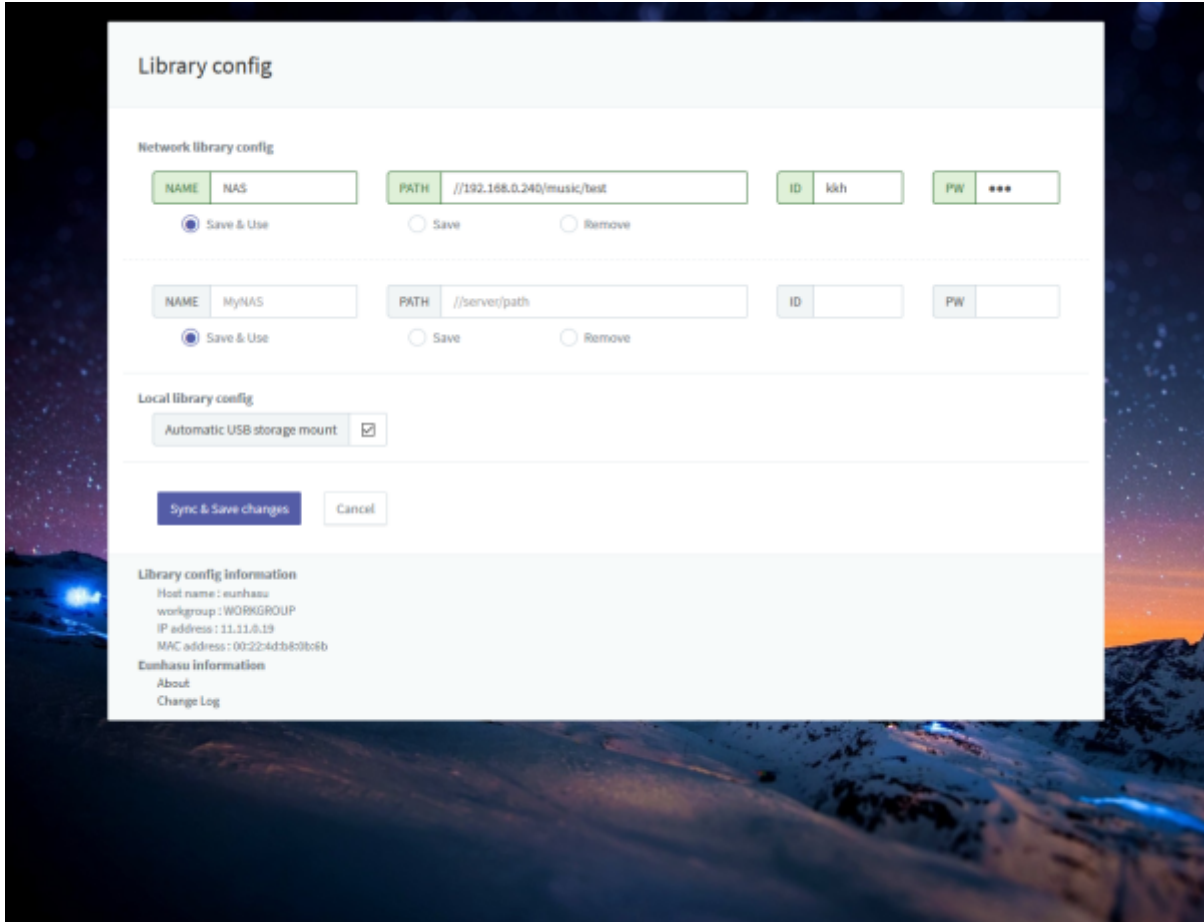
. jpeg, png



Wifi

Wifi

USB



- NAME: Logitech Media Server MPD
가
- PATH: .
- ID: 가
- PW: 가
- Save & Use:
- Save:
- Remove:
- Automatic USB storage mount: USB , 2 USB
 - USB 가 Logitech Media Server MPD
USB1, USB2
- Save changes: 가
- Cancel:

 Save changes , 가

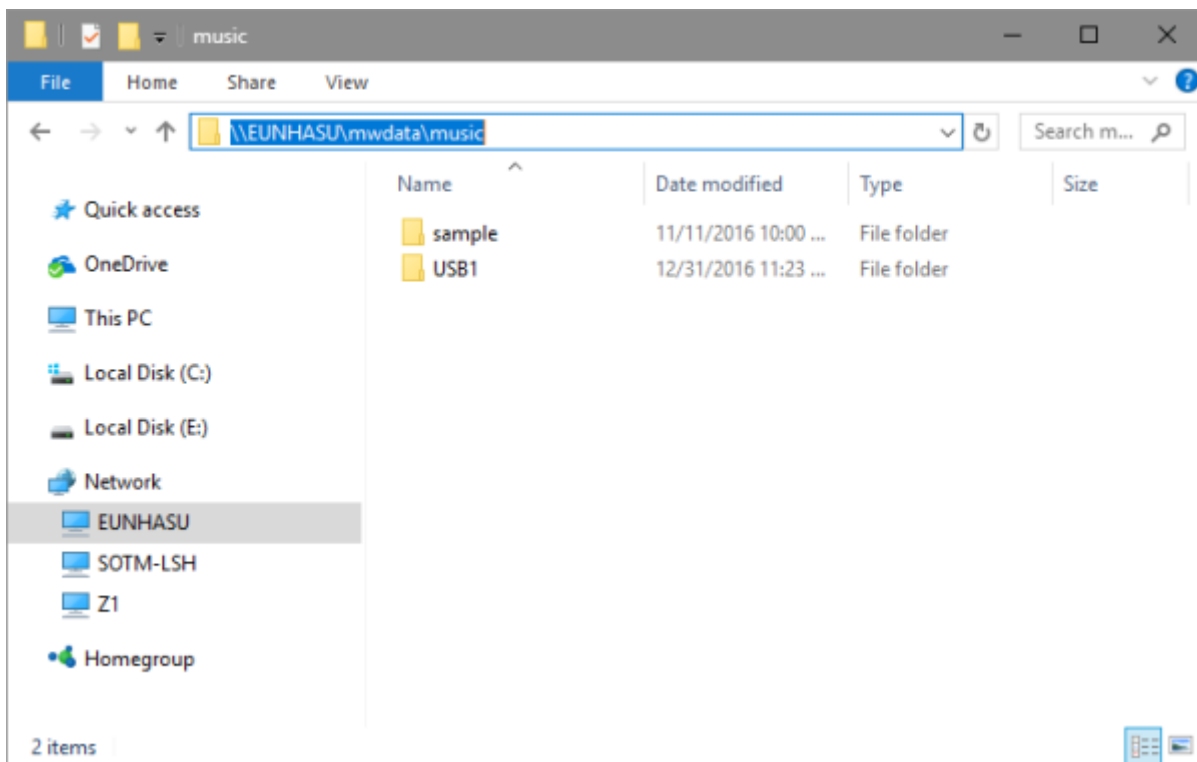
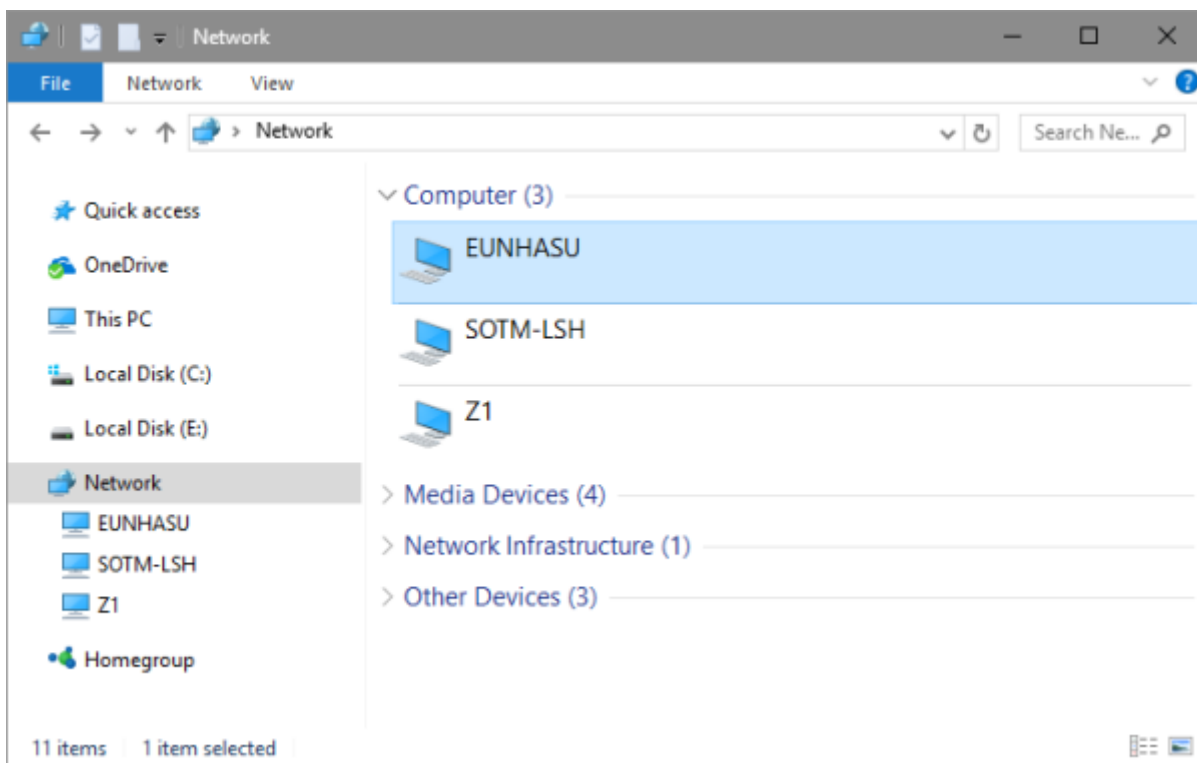
Eunhasu

Windows

'EUNHASU'

Eunhasu 가

Eunhasu 가



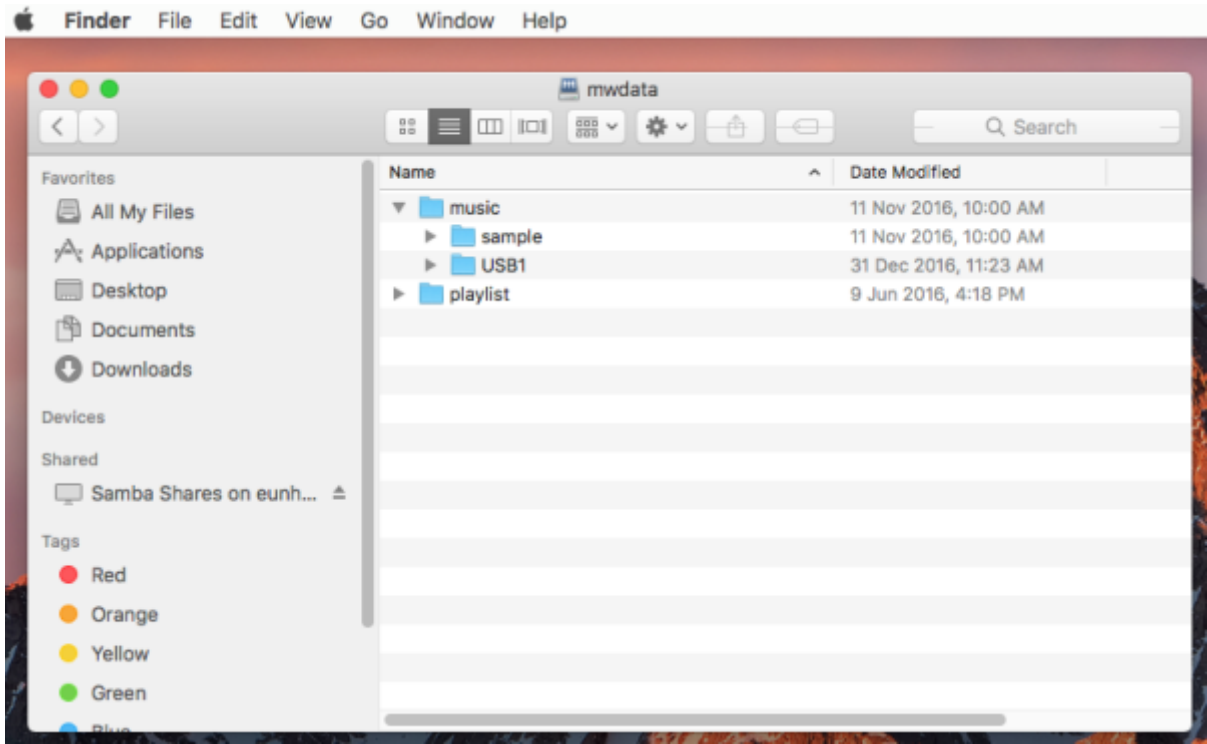
mwdata



Mac OS

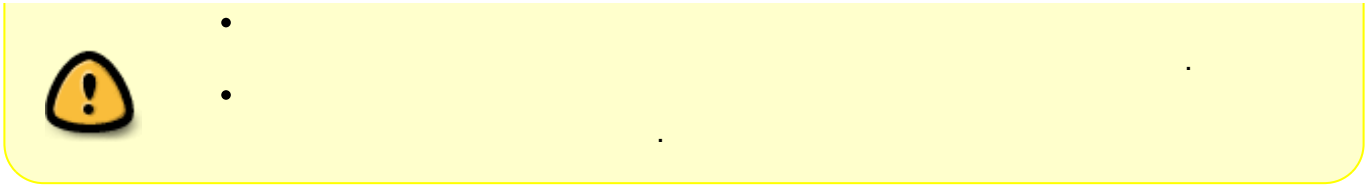
Finder Eunhasu Eunhasu , 'Guest'





- Upgrade now:
- Cancel:





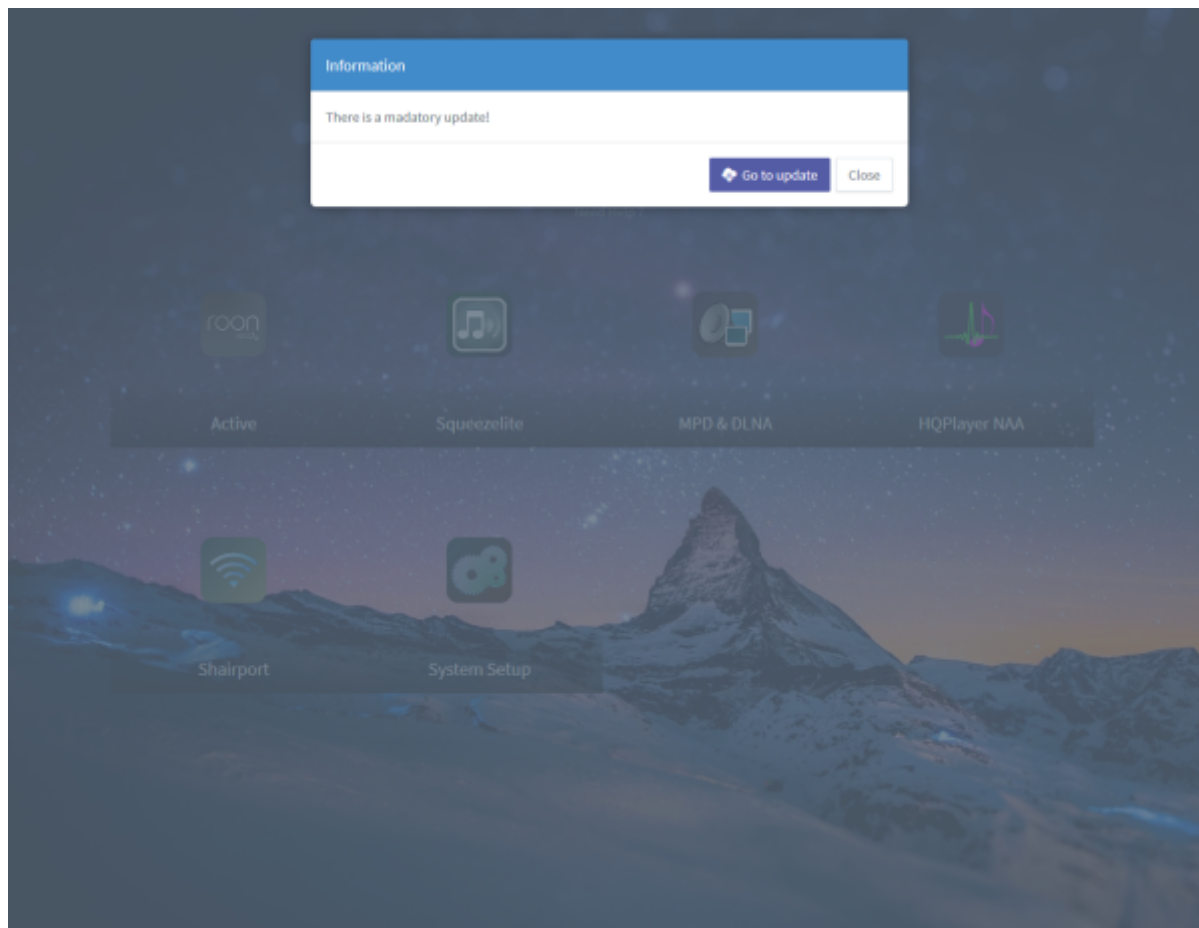
가



, "System Setup"



가




2~3



'power off'

, 'power off'



• Eunhasu 가 PC
 • USB audio output
 • 2TB
 • USB USB2.0 1 USB .2

 • Eunhasu IPv4 , IPv6
 • 가 , mwdata 100%
 • exFAT Eunhasu V0.2.7
 • 가
 • 1
 • Squeezelite, MPD/DLNA 가

가

mSD

sMS-200(or sMS-200ultra) mSD

- [sMS-200 mSD](#)

sMS-1000SQ Eunhasu

sMS-1000SQ Eunhasu

- [sMS-1000SQ Eunhasu](#)

가

Native DSD

DAC

Eunhasu

Native DSD

DAC

| Model | USB ID |
|------------------|--------|
| Playback Designs | 0x23ba |

| Model | USB ID |
|--|-----------------------|
| AURALiC VEGA | 0x1511, 0x0037 |
| Wyred 4 Sound DAC-2 DSD | 0x20b1, 0x0002 |
| iFi Audio micro/nano iDSD | 0x20b1, 0x3008 |
| Matrix Audio X-Sabre | 0x20b1, 0x2008 |
| Matrix Audio Quattro II | 0x20b1, 0x302a |
| Matrix Audio Mini-i Pro | 0x20b1, 0x300a |
| Matrix Audio X-SPDIF 2 | 0x20b1, 0x2004 |
| Pro-Ject Pre Box S2 Digital | 0x2772, 0x0230 |
| OPPO HA-1 | 0x22d9, 0x0416 |
| LH Labs Geek Out 1V5 | 0x2522, 0x0007 |
| OPPO Sonica | 0x22d9, 0x0436 |
| LH Labs VI DAC Infinity | 0x2522, 0x0012 |
| LH Labs Geek Pulse X Inifinity 2V0 | 0x2522, 0x0009 |
| Mytek Brooklyn DAC | 0x25ce, 0x001f |
| Mytek Brooklyn DAC+ | 0x27f7, 0x1301 |
| Mytek Manhattan DAC | 0x25ce, 0x0021 |
| Mytek Liberty DAC | 0x25ce, 0x801e/0x001e |
| NuPrime DAC-10 | 0x16b0, 0x06b2 |
| NuPrime Audio HD-AVP/AVA | 0x16d0, 0x06b4 |
| NuPrime IDA-8 | 0x16d0, 0x09d8 |
| NuPrime Audio DAC-9 | 0x16d0, 0x09db |
| ENCORE mDSD | 0x16d0, 0x09dd |
| Bryston BDA3 | 0x1db5, 0x0003 |
| WavelIO USB Audio 2.0 | 0x20a0, 0x4143 |
| Gustard DAC-X20U | 0x20b1, 0x000a |
| Denafrips DAC | 0x20b1, 0x2005 |
| DIYINHK DSD DXD 384kHz USB to I2S/DSD | 0x20b1, 0x2009 |
| OKTO RESEARCH DAC8PRO | 0x20b1, 0x2009 |
| JLsounds I2SoverUSB | 0x20b1, 0x2023 |
| Engineered Electronics Stereo Playback Interface | 0x20b1, 0x300f |
| Eastern El. MiniMax Tube DAC Supreme | 0x20b1, 0x3021 |
| Aune X1S 32BIT/384 DSD DAC | 0x20b1, 0x3023 |
| Unison Research Unico CD Due | 0x20b1, 0x302d |
| Holo Springs Level 3 R2R DAC | 0x20b1, 0x3036 |
| Soekris dac1101 | 0x20b1, 0x3073 |
| Singxer F-1 converter board | 0x20b1, 0x3086 |
| CH Precision C1 DAC | 0x20b1, 0x307b |
| OPPO HA-2 | 0x22d9, 0x0426 |
| HDTA Serenade DSD | 0x22e1, 0xca01 |
| PS Audio NuWave DAC | 0x2616, 0x0106 |
| Audiolab 8300 CDQ | 0x2622, 0x0041 |
| Audiolab M-DAC+ | 0x2622, 0x0041 |
| Mutec MC3+ USB | 0x29a2, 0x0086 |
| Cayin iDAC-6 | 0x2d87, 0x000a |
| MSB Technology | 0x6b42, 0x0042 |

| Model | USB ID |
|---|----------------|
| W4S DAC-2v2SE | 0x27f7, 0x3002 |
| Amanero Combo384 | 0x16d0, 0x071a |
| JAVS X6-DAC | 0x2573, 0x8201 |
| iFi Neo iDSD | 0x20b1, 0x3009 |
| iFi Pro iDSD | 0x20bi, 0x3008 |
| OPPO UDP-205 | 0x22d9, 0x0461 |
| Topping D50, D70, D30 Pro | 0x152a, 0x8750 |
| Hegel HD12 DSD | 0x0d8c, 0x0316 |
| Furutech ADL Stratos | 0x16d0, 0x0733 |
| M2Tech Young MkIII | 0x249c, 0x9326 |
| M2Tech hiFaceTWO | 0x249c, 0x930b |
| W4S DAC-2v2SE | 0x27f7, 0x3002 |
| Rotel 1592 | 0x278b, 0x5100 |
| sDP-1000EX | 0x30b1, 0x2102 |
| T+A USB HD Audio 1 | 0x2ab6, Any |
| T+A USB HD Audio 2 | |
| T+A SD 3100 HV | |
| Denon DA-300USB | 0x154e, 0x1003 |
| Denon DCD-1500RE | 0x154e, 0x1002 |
| Denon XMOS USB Audio Device | 0x154e |
| Marantz HD-DAC1, Marantz NA11-S | 0x154e, 0x3005 |
| Marantz SA-14S1 | 0x154e, 0x3006 |
| Luxman DA-06 | 0x1852, 0x5065 |
| TEAC UD-501/UD-501V2/UD-503/NT-503 | 0x0644, 0x8043 |
| Esoteric D-05X | 0x0644, 0x8044 |
| TEAC UD-301 | 0x0644, 0x804a |
| Mola Mola Makua | 0x20b1, 0x3089 |
| Peachtree nova500 | 0x29c5, 0x0022 |
| Gustard USB audio GSD audio | 0x292b, 0xc4b3 |
| Lindemann USB Audio 2.0 | 0x2305, 0x0010 |
| D&M holdings Inc. PMA-2500NE | 0x154e, 0x1007 |
| Quad Artera DAC | 0x2622, 0x0002 |
| Quad XU1 Audio | 0x2622, 0x0001 |
| Mission XU1 Audio | 0x2622, 0x0010 |
| Luxman XU1 Audio | 0x2622, 0x0020 |
| Wharfedale XU1 Audio | 0x2622, 0x0030 |
| Audiolab XU1 Audio | 0x2622, 0x0040 |
| Ekco XU1 Audio | 0x2622, 0x0050 |
| IAG XU1 Audio | 0x2622, 0x0060 |
| Mission Audio | 0x2622, 0x0011 |
| Luxman Audio | 0x2622, 0x0021 |
| Wharfedale Audio | 0x2622, 0x0031 |
| Ekco Audio | 0x2622, 0x0051 |
| IAG Audio | 0x2622, 0x0061 |
| Accuphase DC-950 / DP-560 / DC-37 / DP-430 / DAC-50 | 0x21ed, 0xd37a |

| Model | USB ID |
|--------------------------|----------------|
| Auralic Vega G2.1 | 0x1511, 0x0052 |
| Marantz SA10S1 | 0x154e, 0x3008 |
| ARCAM irDAC II | 0x25c4 |
| DA2 McIntosh | 0x2afd, 0x000b |
| Aqua USB Audio 384 | 0x31c1 |
| Using XMOS XU208 chipset | 0x25d0, 0x0002 |
| Auralic Sirius G2.1 | 0x1511, 0x0058 |
| MCS Evolution DAC-2 | 0x16d0, 0x0e5 |
| NuPrime Evolution DAC-2 | 0x16d0, 0x0e5 |
| Accuphase DAC-60 | 0x21ed, 0xd75a |

DAC가 Eunhasu

DAC infomation

Native DSD DAC

DAC

192.168.0.126/sysconfig.php

General Background Wifi

To change Hostname and workgroup name, replace input box content what you want to change and click 'Save & Reboot system' button.

Host name

Enter Host name

Workgroup

Enter Workgroup name

Warning do not forget you static IP. If you forgot you static IP, do following instructions to reset to DHCP. 1. power on device. 2. unplug wired LAN cable from device. 3. wait over 15 minutes. 4. plug wired LAN cable again. 5. rebooting device.

ETHERNET 0 DHCP enp1s0 - 00:22:4D:B4:DA:42

IP Address Netmask

Gateway DNS Server

IPv6 protocol Enable

Save & Reboot system Reboot & Check disk Cancel

System information **Click**

Detail system information

DAC information

Eunhasu web interface version : V0.4.19

Network Information

enp1s0 || 00:22:4D:B4:DA:42 - 192.168.0.126 - DHCP - UP

Tag ID : eb269c4

Eunhasu information

About

Change Log

DAC

DAC USB ID

```

**** List of PLAYBACK Hardware Devices ****
card 0: Audio [iFi (by AMR) HD USB Audio], device 0: USB Audio [USB Audio]
  Subdevices: 1/1
  Subdevice #0: subdevice #0

```

```

Bus 004 Device 001: ID 1d6b:0001 Linux Foundation 1.1 root hub
Bus 002 Device 003: ID 20b1:3008 XMOS Ltd
Bus 002 Device 001: ID 1d6b:0002 Linux Foundation 2.0 root hub
Bus 001 Device 001: ID 1d6b:0001 Linux Foundation 1.1 root hub
Bus 003 Device 004: ID 0781:5583 SanDisk Corp.
Bus 003 Device 002: ID 05e3:0610 Genesys Logic, Inc. 4-port hub
Bus 003 Device 001: ID 1d6b:0002 Linux Foundation 2.0 root hub

```

```

0 [Audio          ]: USB-Audio - iFi (by AMR) HD USB Audio
                      iFi (by AMR) iFi (by AMR) HD USB Audio at usb-1c1c000.usb-1, high speed

```

iFi (by AMR) iFi (by AMR) HD USB Audio at usb-1c1c000.usb-1, high speed : USB Audio

| | | | |
|----------------|------------|---------------------|-----|
| Native DSD DAC | USB ID가 | Native DSD | DAC |
| | USB ID가 | info@sotm-audio.com | DAC |
| Eunhasu | Native DAC | | |

From:
<https://www.wiki.sotm-audio.com/> - **SOTm docs**

Permanent link:
<https://www.wiki.sotm-audio.com/doku.php?id=ko:eunhasu:start&rev=1703591230>

Last update: **2023/12/26 06:47**

