

# mSD

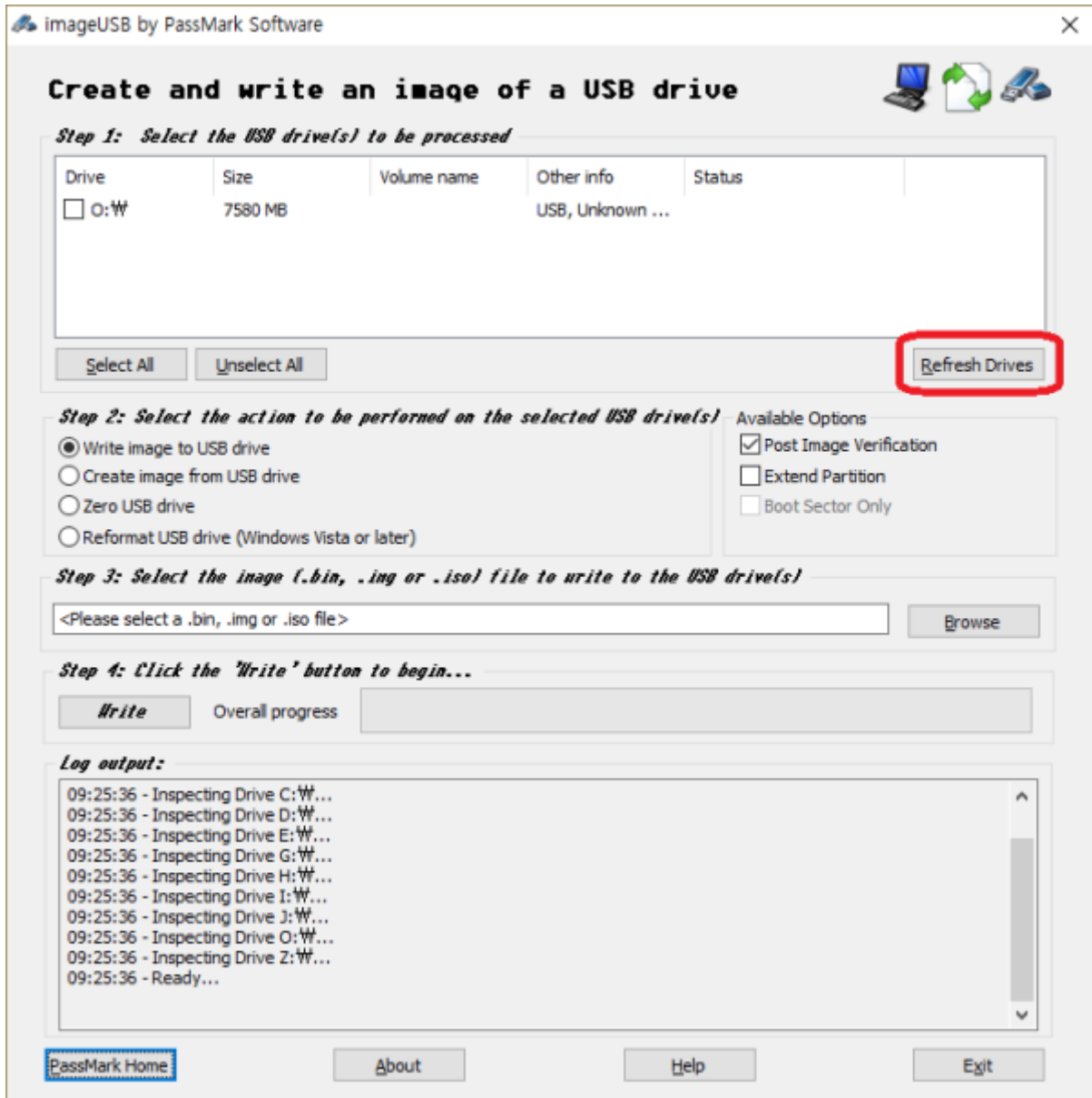
micro SD

## Windows

1. SD  
.( 3.0 GB .gz ) [new micro SD card image](#)
2. SD  
.( 7.9 GB .img )
3. PC [imageUSB](#) ,
4. SMS-200 SD  
SD PC .

## imageUSB

[imageUSB](#) , USB 가 ,  
'Refresh Drives' .

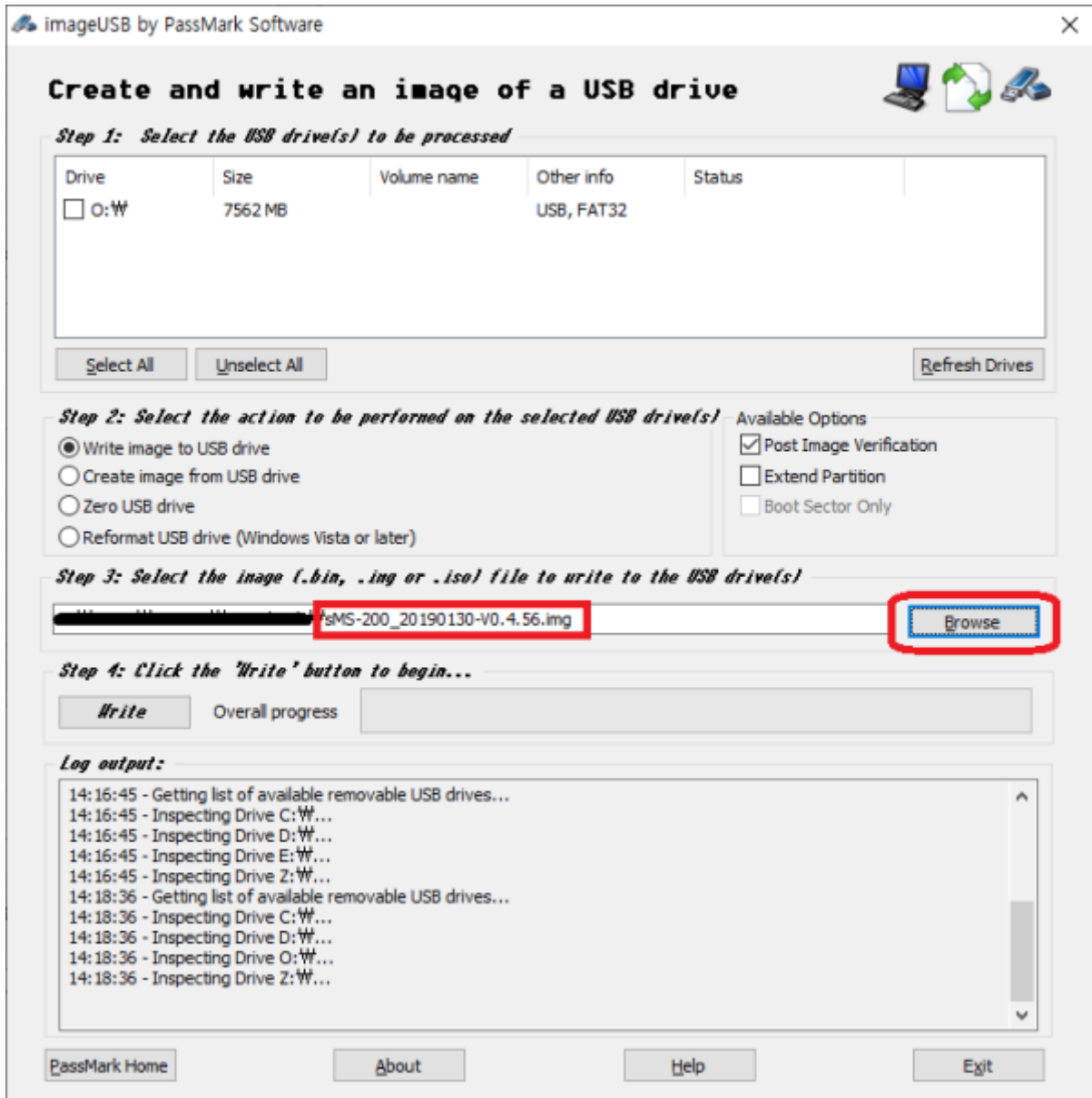


USB

USB



'Browse'



'Write'

SD



1. 가 SD SMS-200
2. SMS-200

## SD



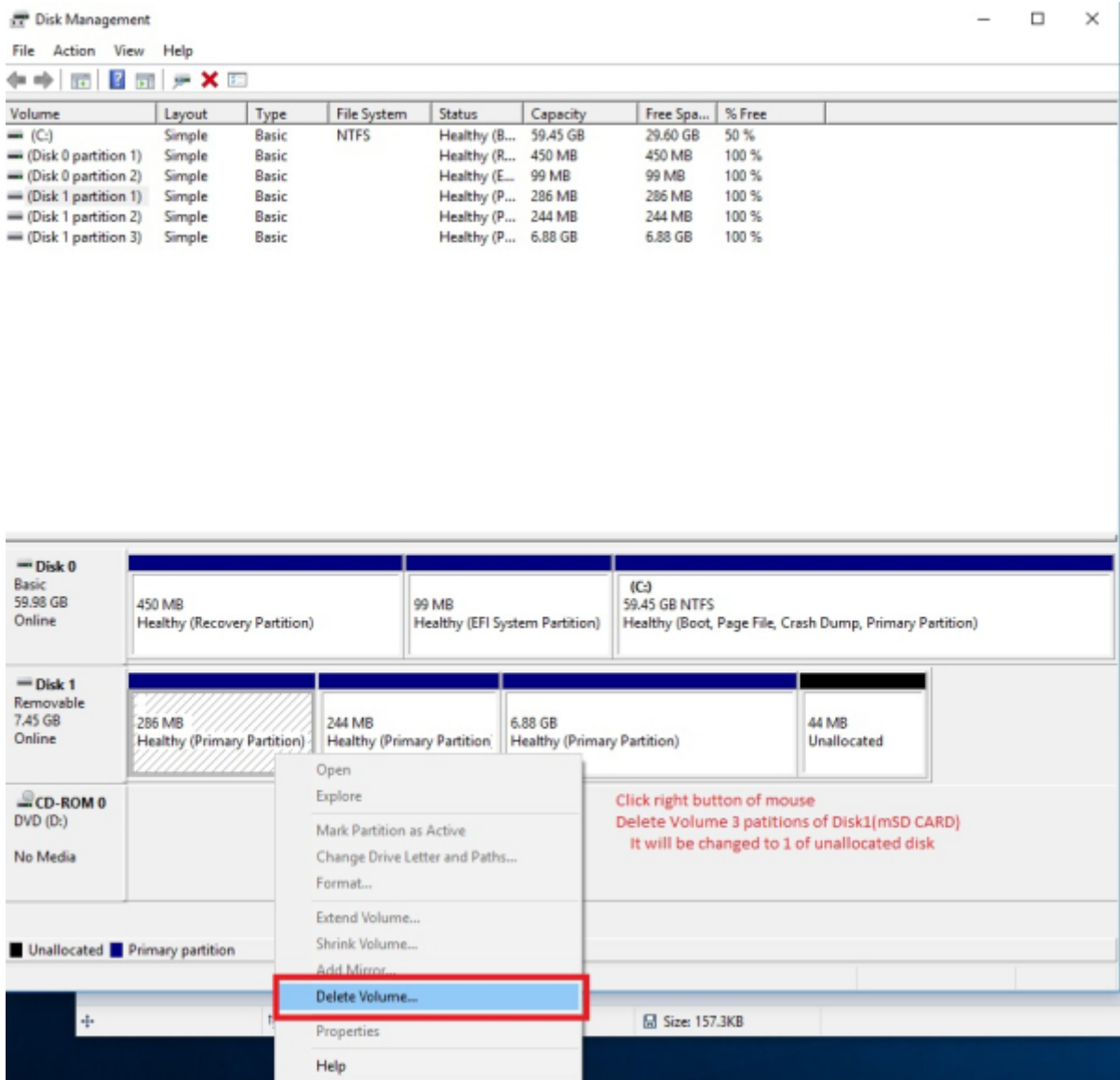
The screenshot shows the Windows Disk Management console. At the top, a table lists the system volumes. Below this, the graphical view shows Disk 0 and Disk 1. Disk 0 is a 59.98 GB Basic disk with three partitions: a 450 MB Recovery Partition, a 99 MB EFI System Partition, and a 59.45 GB NTFS Primary Partition (C:). Disk 1 is a 7.45 GB Removable disk with three partitions: a 286 MB Primary Partition, a 244 MB Primary Partition, and a 6.88 GB Primary Partition. A 44 MB Unallocated space is also shown at the end of Disk 1. A red box highlights the Disk 1 section.

Volume	Layout	Type	File System	Status	Capacity	Free Spa...	% Free
(C:)	Simple	Basic	NTFS	Healthy (B...	59.45 GB	29.60 GB	50 %
(Disk 0 partition 1)	Simple	Basic		Healthy (R...	450 MB	450 MB	100 %
(Disk 0 partition 2)	Simple	Basic		Healthy (E...	99 MB	99 MB	100 %
(Disk 1 partition 1)	Simple	Basic		Healthy (P...	286 MB	286 MB	100 %
(Disk 1 partition 2)	Simple	Basic		Healthy (P...	244 MB	244 MB	100 %
(Disk 1 partition 3)	Simple	Basic		Healthy (P...	6.88 GB	6.88 GB	100 %

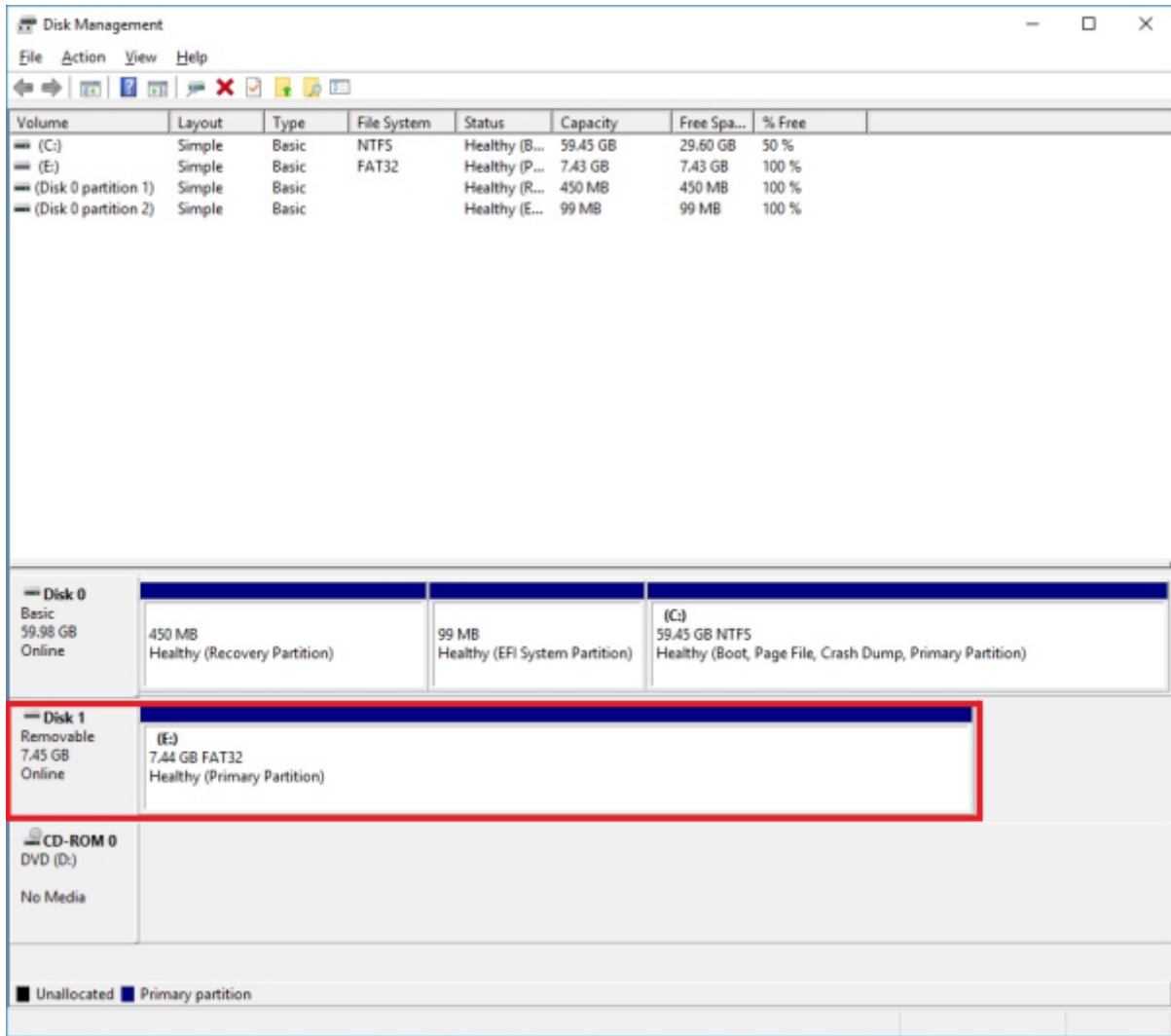
  

Disk	Capacity	Partition 1	Partition 2	Partition 3
Disk 0 Basic 59.98 GB Online	450 MB Healthy (Recovery Partition)	99 MB Healthy (EFI System Partition)	(C:) 59.45 GB NTFS Healthy (Boot, Page File, Crash Dump, Primary Partition)	
Disk 1 Removable 7.45 GB Online	286 MB Healthy (Primary Partition)	244 MB Healthy (Primary Partition)	6.88 GB Healthy (Primary Partition)	44 MB Unallocated

■ Unallocated ■ Primary partition







## macOS

1. SD ( 3.0 GB .gz ) new micro SD card image
2. dd-utility . <https://www.thefanclub.co.za> github
3. SMS-200 SD PC SD

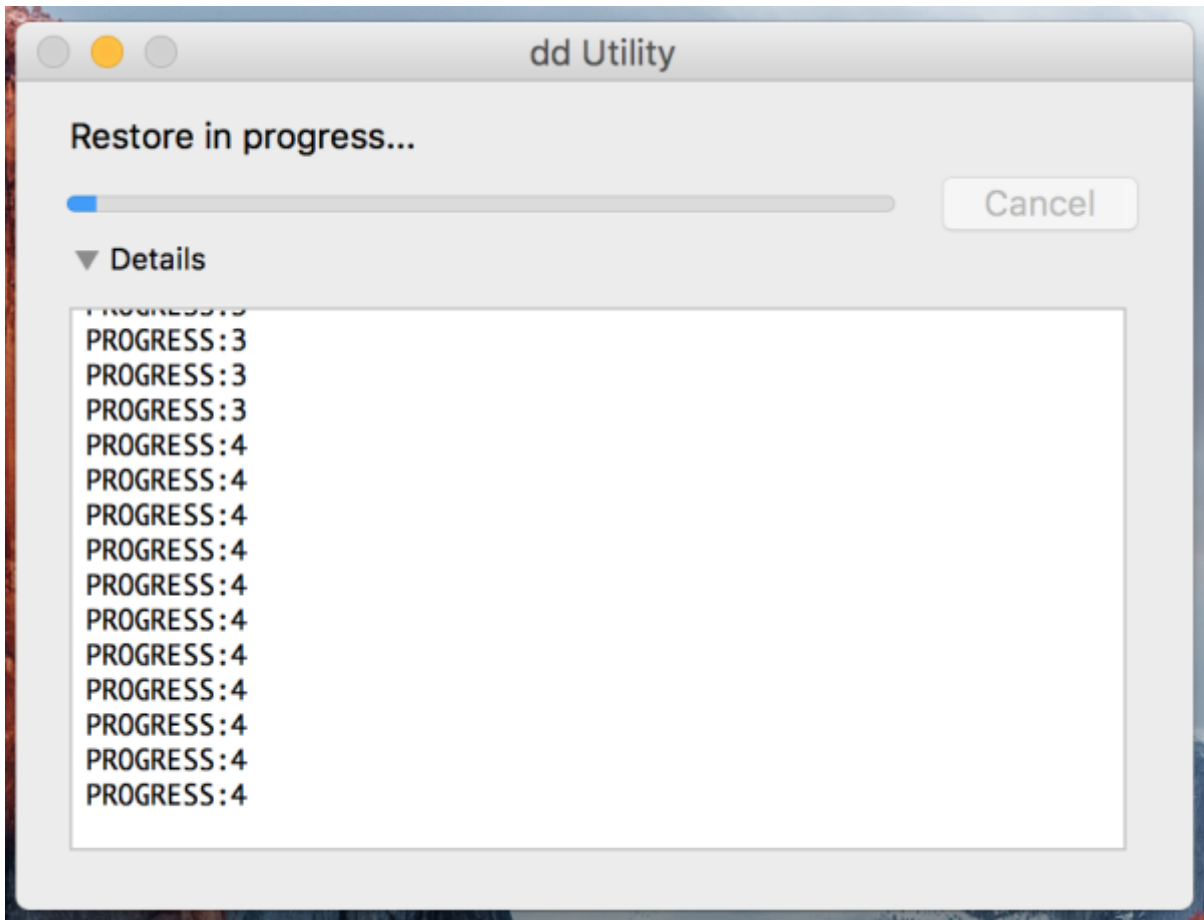
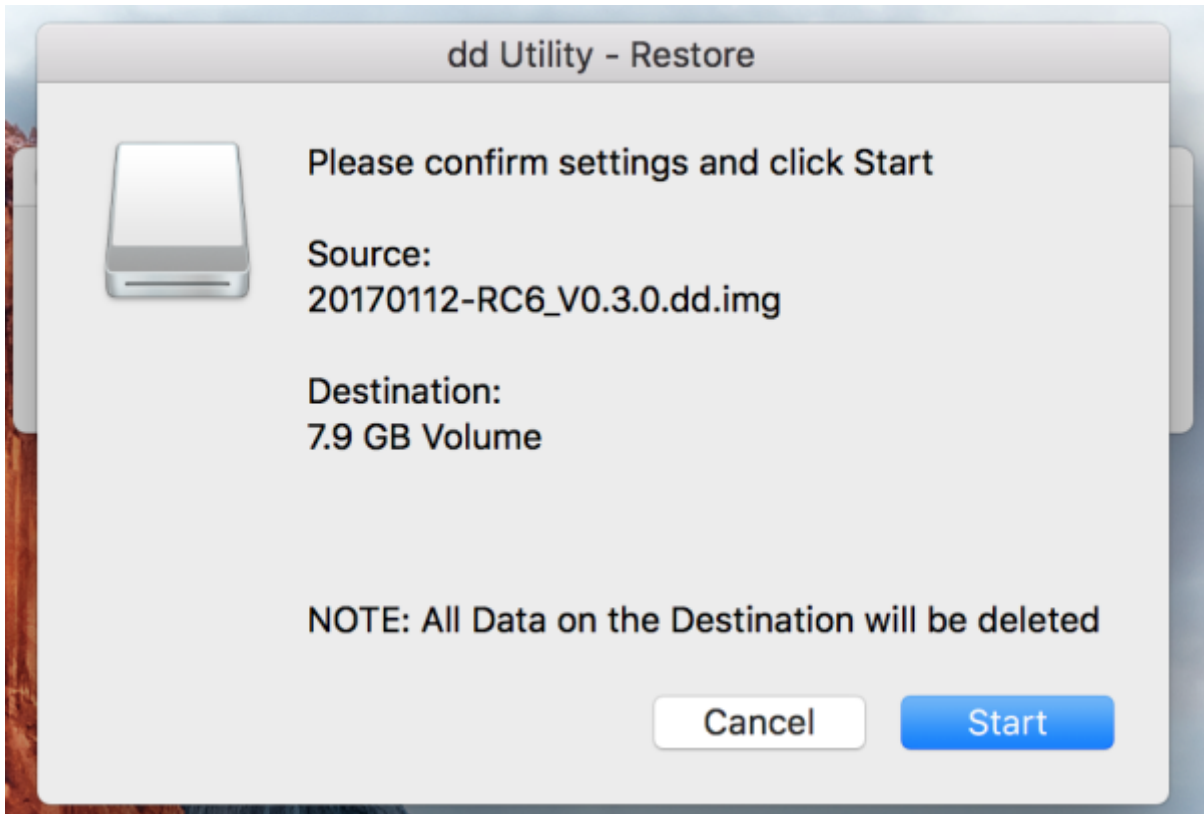
## Start Restore

dd-utility 'Restore' .img



SD





sMS-200

SD

## dd-utility

- [imageUSB for Windows](#)
- [dd-utility for macOS](#)

## micro SD card

- [Eunhasu V0.4.22](#)
- [Eunhasu V0.5.1](#)
- [Eunhasu V0.5.2](#)
- [Eunhasu V0.5.31](#)
- [Eunhasu V0.5.41](#)
- [Eunhasu V0.5.51](#)
- [Eunhasu V0.5.62](#)
- [Eunhasu V0.5.7](#)
- [Eunhasu V0.5.8](#)
- [Eunhasu V0.5.9](#)
- [Eunhasu V0.6.0](#)
- [Eunhasu V0.6.1](#)

From:

<https://www.wiki.sotm-audio.com/> - **SOTM docs**

Permanent link:

[https://www.wiki.sotm-audio.com/doku.php?id=ko:eunhasu:burn\\_sdcard\\_image&rev=1757676949](https://www.wiki.sotm-audio.com/doku.php?id=ko:eunhasu:burn_sdcard_image&rev=1757676949)

Last update: **2025/09/12 07:35**

