

mSD

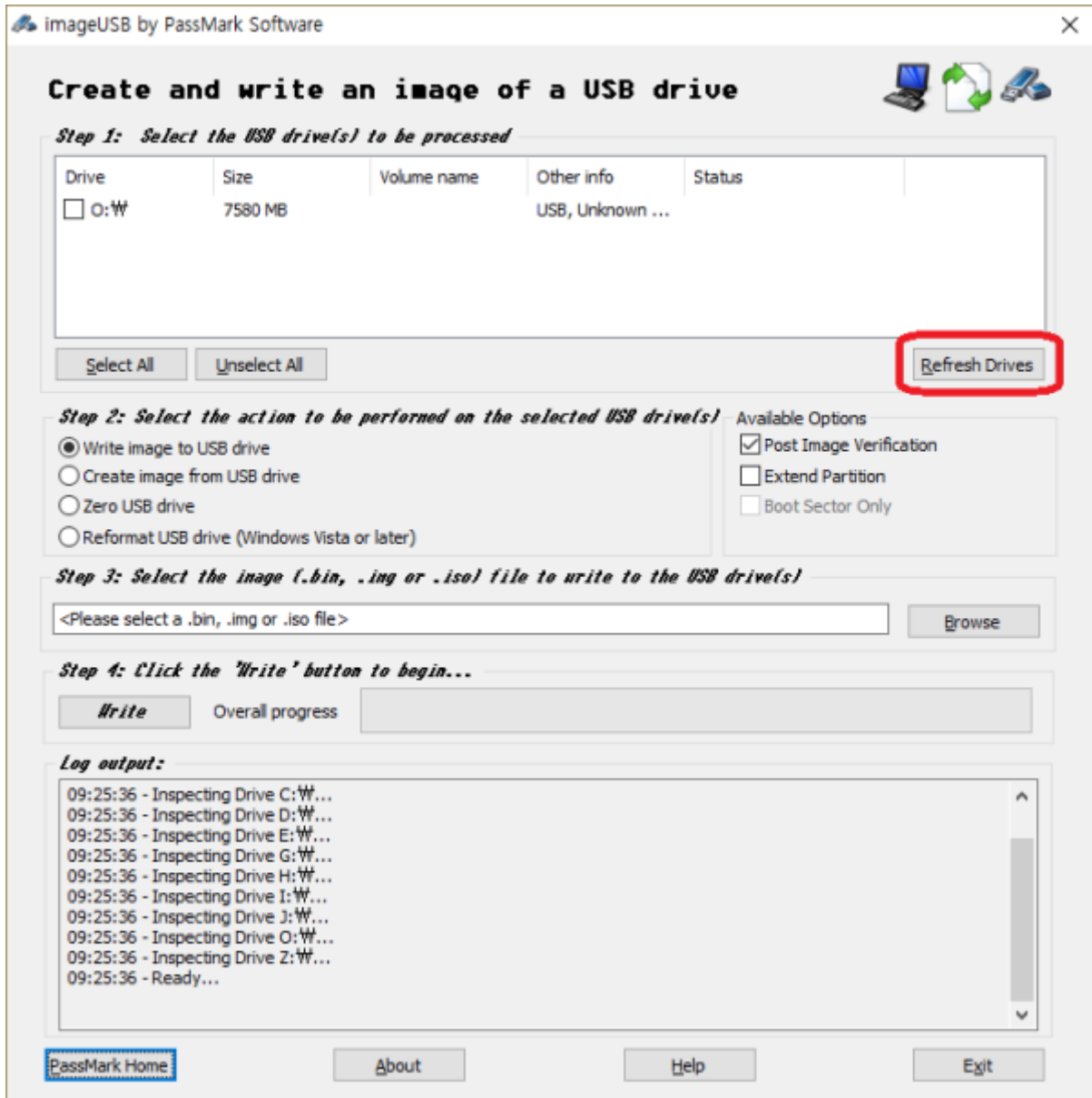
micro SD

Windows

1. SD (3.0 GB .gz) [new micro SD card image](#)
2. SD (7.9 GB .img)
3. PC [imageUSB](#) ,
4. SMS-200 SD PC

imageUSB

[imageUSB](#) , USB 가 ,
 'Refresh Drives' .

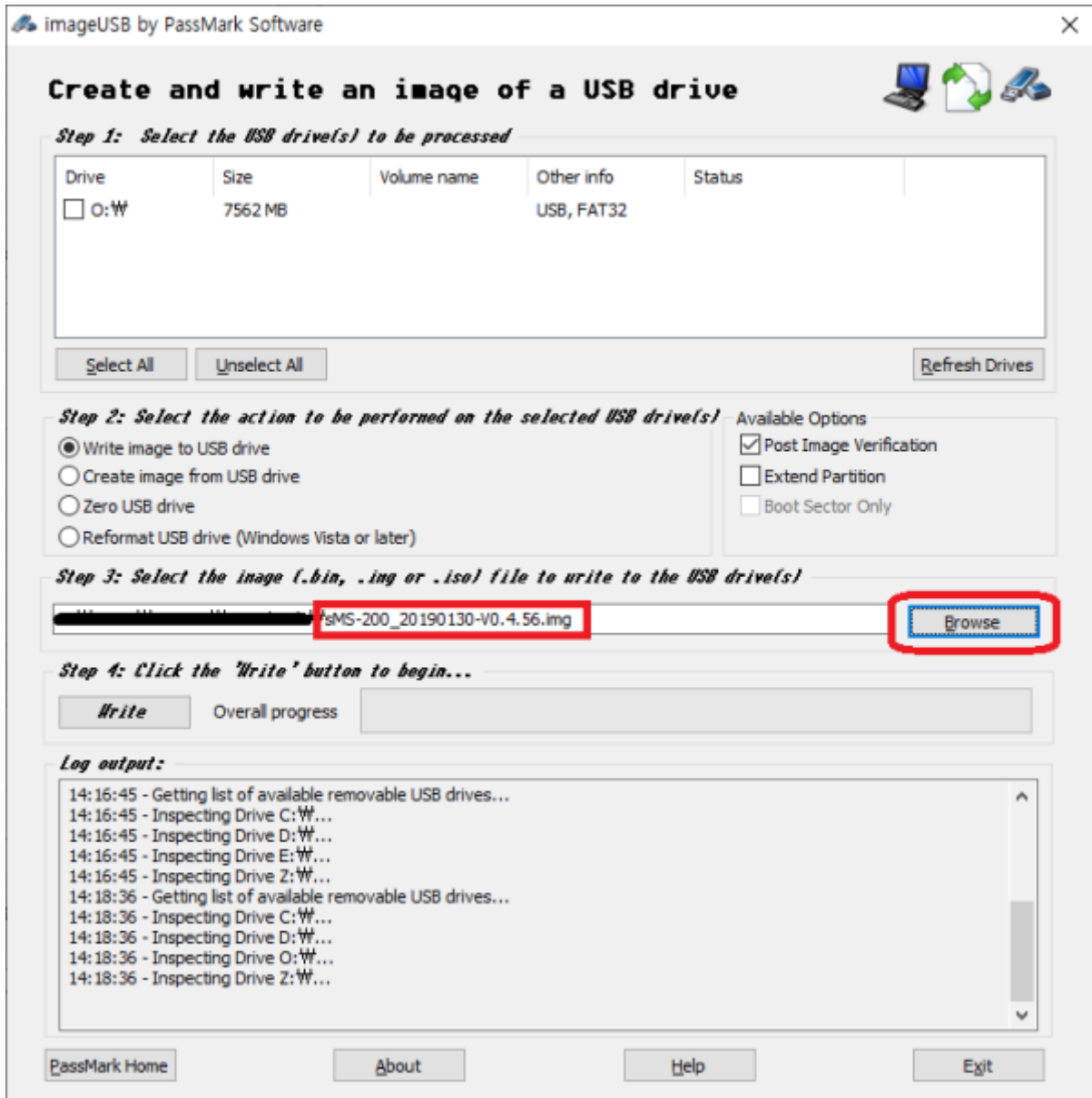


USB

USB



'Browse'



'Write'

SD



1. 가 SD SMS-200
2. SMS-200

SD

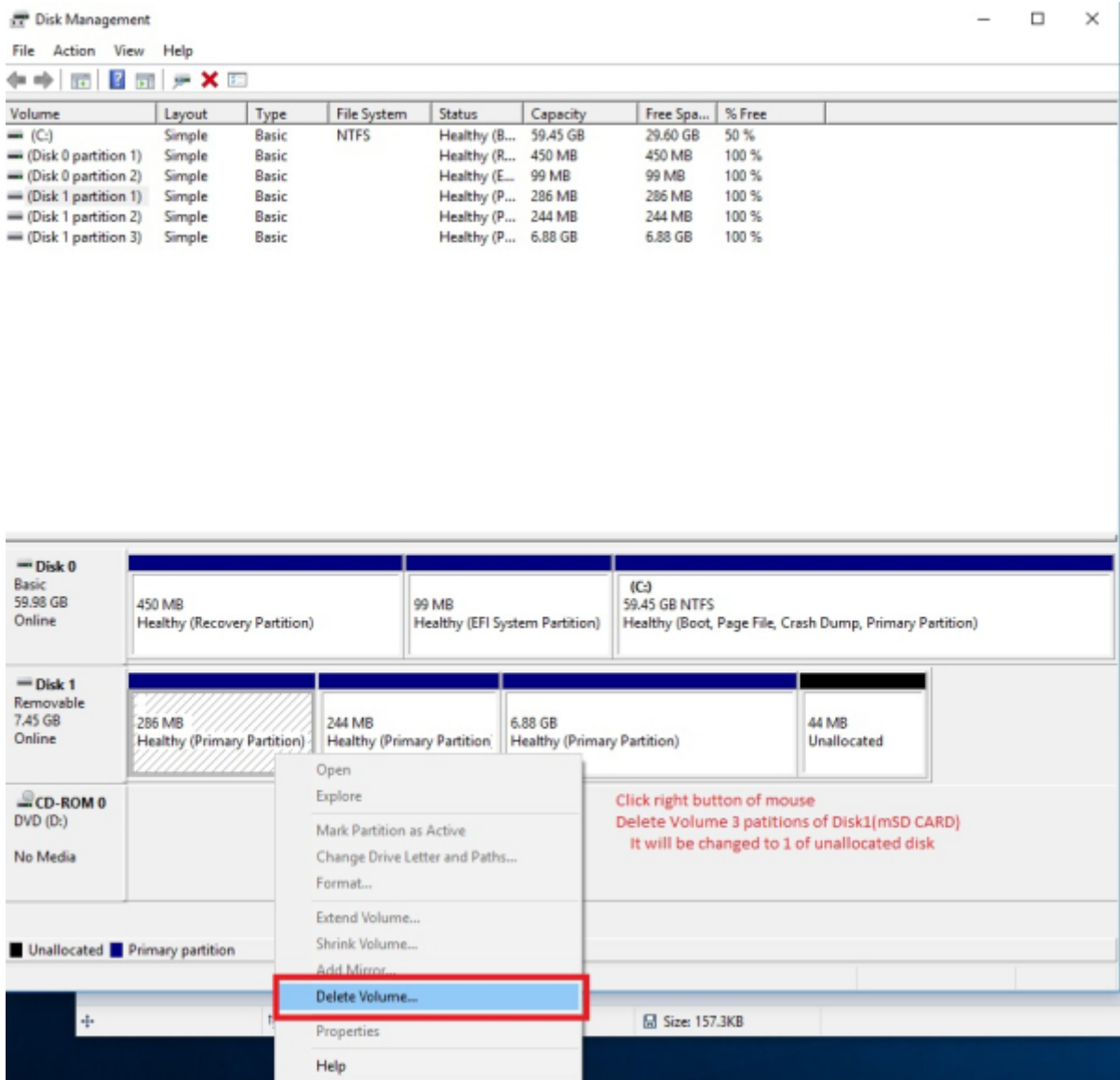


The screenshot shows the Windows Disk Management console. At the top, a table lists the system's volumes. Below this, the details for Disk 0 and Disk 1 are shown. A red rectangle highlights the Disk 1 section, which includes a 286 MB primary partition, a 244 MB primary partition, a 6.88 GB primary partition, and 44 MB of unallocated space.

| Volume | Layout | Type | File System | Status | Capacity | Free Spa... | % Free |
|----------------------|--------|-------|-------------|---------------|----------|-------------|--------|
| (C:) | Simple | Basic | NTFS | Healthy (B... | 59.45 GB | 29.60 GB | 50 % |
| (Disk 0 partition 1) | Simple | Basic | | Healthy (R... | 450 MB | 450 MB | 100 % |
| (Disk 0 partition 2) | Simple | Basic | | Healthy (E... | 99 MB | 99 MB | 100 % |
| (Disk 1 partition 1) | Simple | Basic | | Healthy (P... | 286 MB | 286 MB | 100 % |
| (Disk 1 partition 2) | Simple | Basic | | Healthy (P... | 244 MB | 244 MB | 100 % |
| (Disk 1 partition 3) | Simple | Basic | | Healthy (P... | 6.88 GB | 6.88 GB | 100 % |

| Disk | Capacity | Partition 1 | Partition 2 | Partition 3 | Partition 4 |
|--|--|---|--|----------------------|-------------|
| Disk 0 Basic 59.98 GB Online | 450 MB Healthy (Recovery Partition) | 99 MB Healthy (EFI System Partition) | (C:) 59.45 GB NTFS Healthy (Boot, Page File, Crash Dump, Primary Partition) | | |
| Disk 1 Removable 7.45 GB Online | 286 MB Healthy (Primary Partition) | 244 MB Healthy (Primary Partition) | 6.88 GB Healthy (Primary Partition) | 44 MB Unallocated | |
| CD-ROM 0 DVD (D:) | No Media | | | | |

Legend: ■ Unallocated ■ Primary partition







macOS

1. SD (3.0 GB .gz) new micro SD card image
2. dd-utility <https://www.thefanclub.co.za> [github](#)
3. SMS-200 SD PC SD

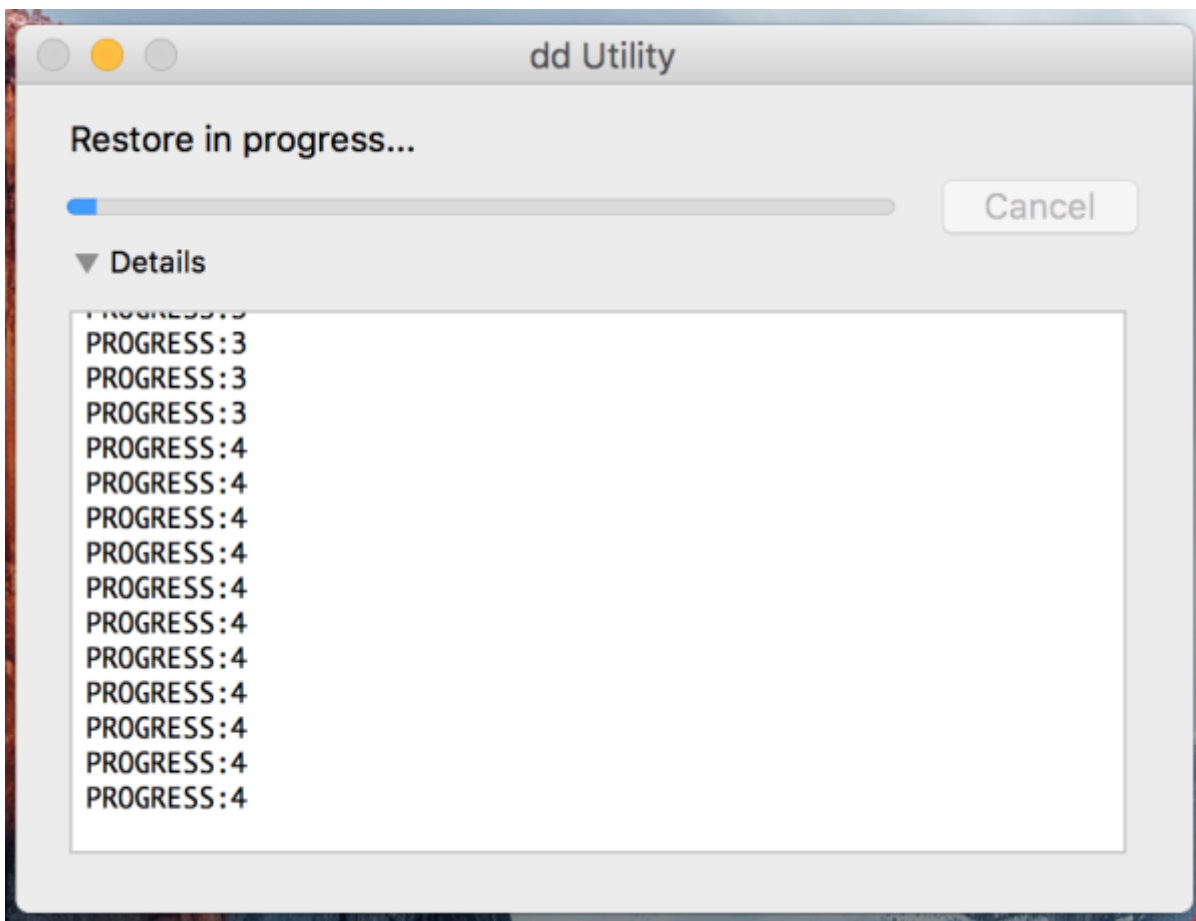
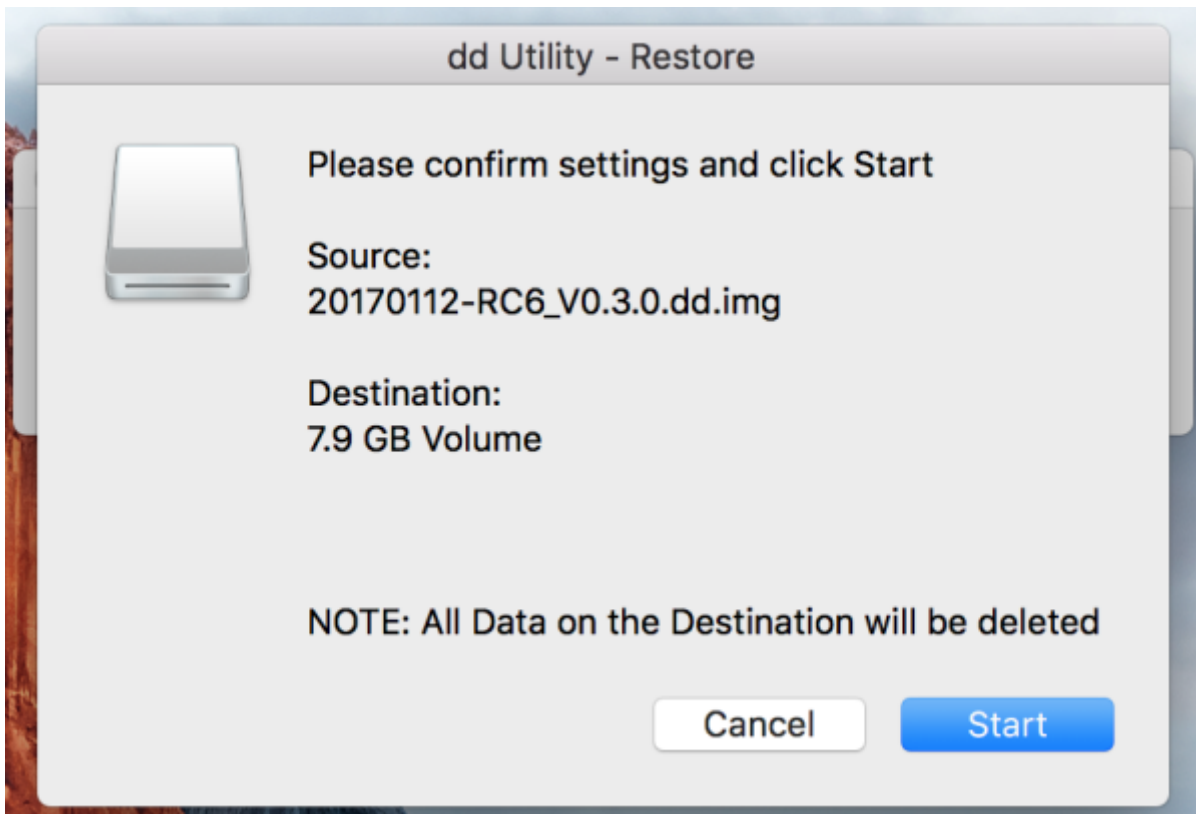
Start Restore

[dd-utility](#) 'Restore' .img



SD





sMS-200

SD

dd-utility

- [imageUSB for Windows](#)
- [dd-utility for macOS](#)

micro SD card

- [Eunhasu V0.4.22](#)
- [Eunhasu V0.5.1](#)
- [Eunhasu V0.5.2](#)
- [Eunhasu V0.5.31](#)
- [Eunhasu V0.5.41](#)
- [Eunhasu V0.5.51](#)
- [Eunhasu V0.5.62](#)

From:

<https://www.wiki.sotm-audio.com/> - **SOTM docs**

Permanent link:

https://www.wiki.sotm-audio.com/doku.php?id=ko:eunhasu:burn_sdcard_image&rev=1718702710

Last update: **2024/06/18 05:25**

