

# mSD

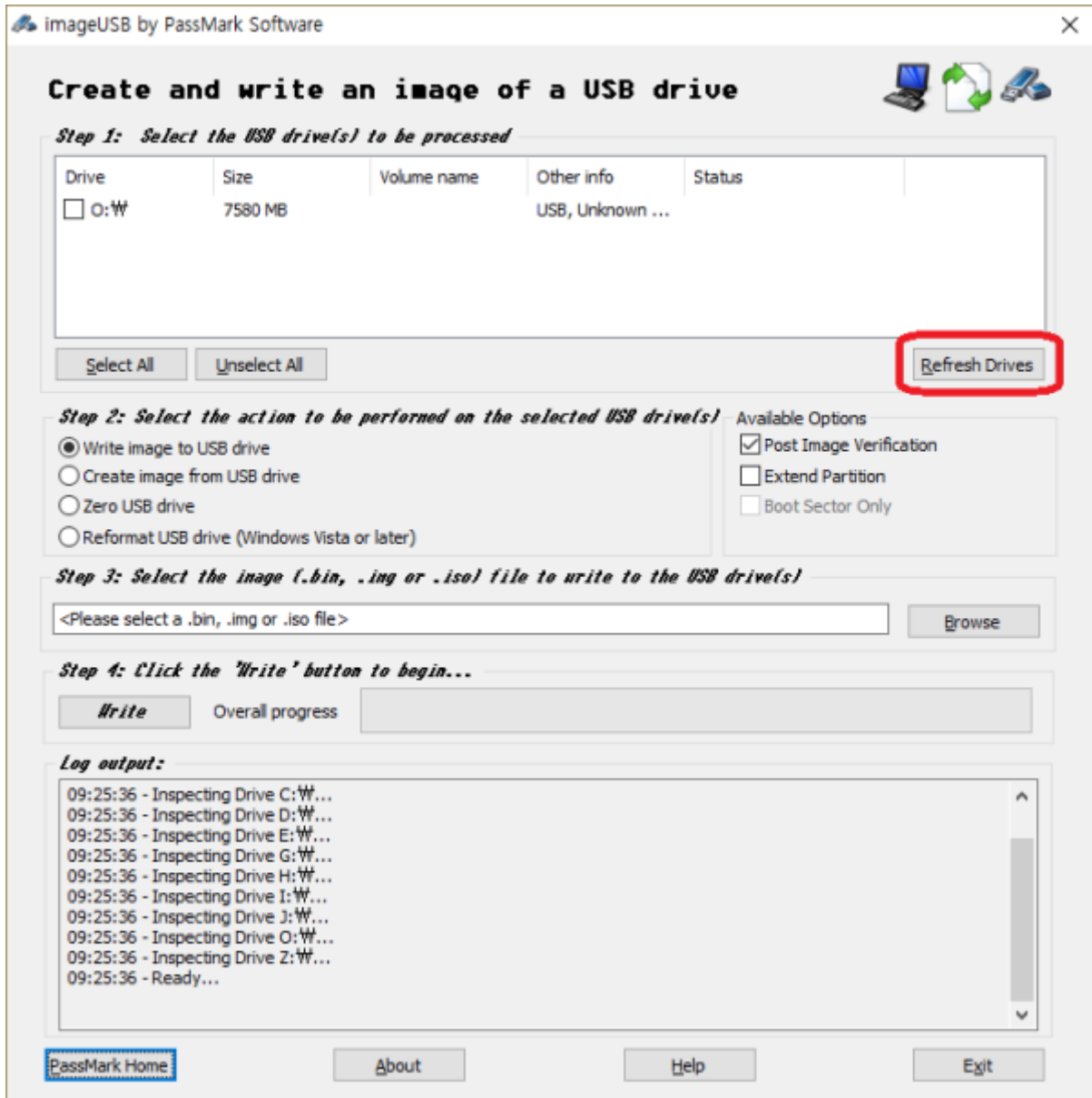
micro SD

## Windows

1. SD  
.( 3.0 GB .gz ) [new micro SD card image](#)
2. SD  
.( 7.9 GB .img )
3. PC [imageUSB](#) ,
4. SMS-200 SD  
SD PC .

## imageUSB

[imageUSB](#) , USB 가 ,  
'Refresh Drives' .



USB

USB



'Browse'



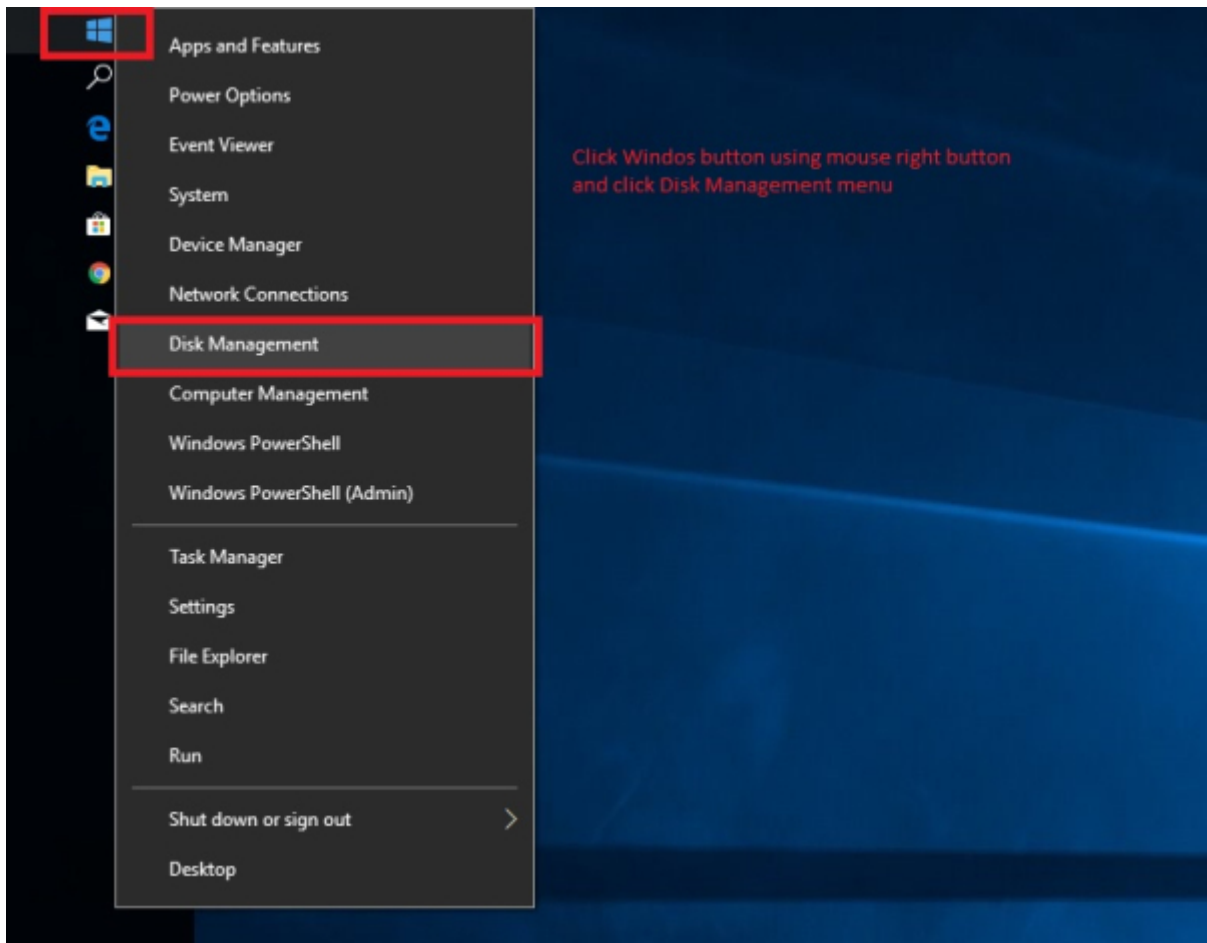
'Write'

SD



1. 가 SD SMS-200
2. SMS-200

## SD

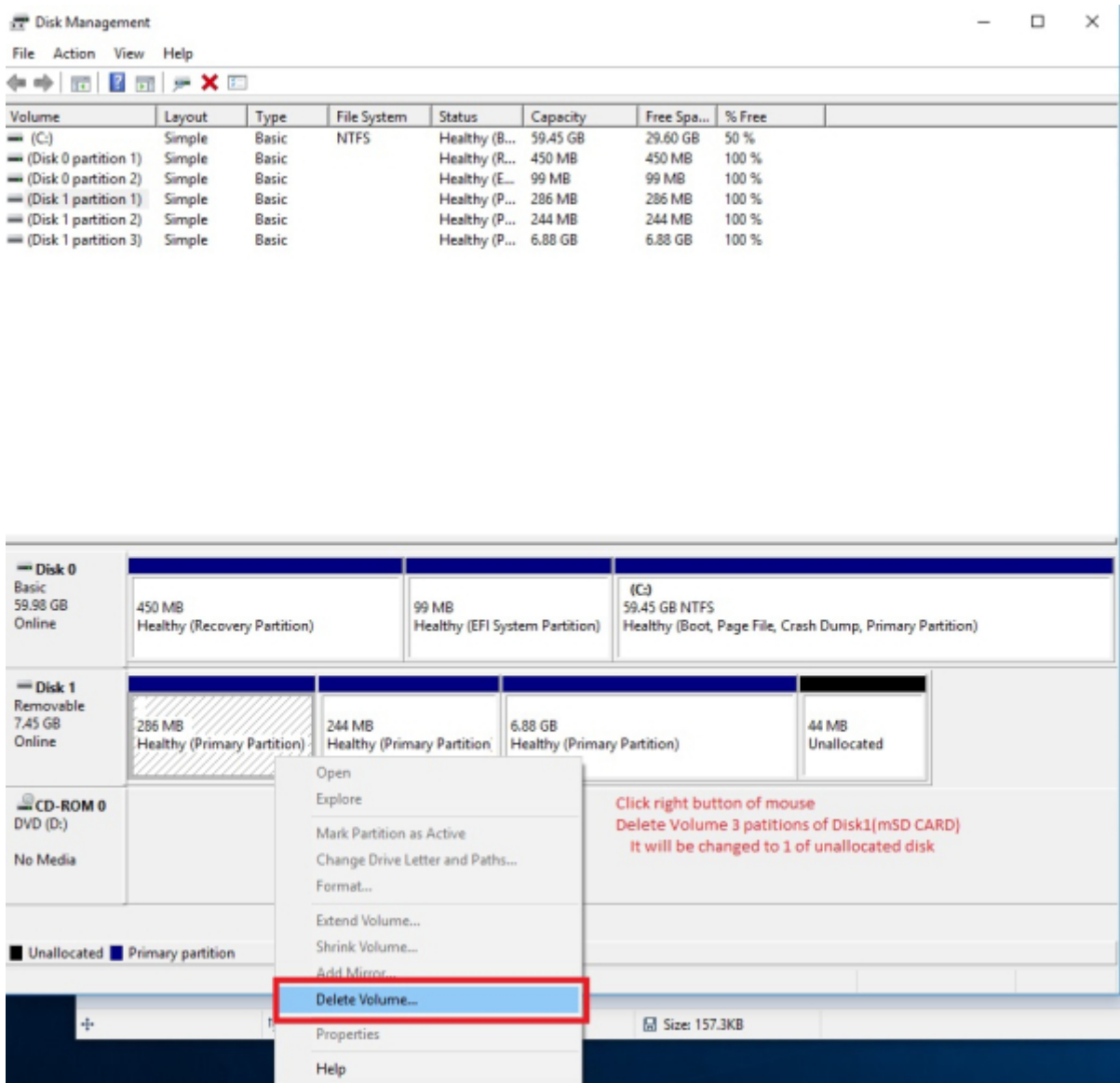


The screenshot shows the Windows Disk Management console. At the top, a table lists the system's volumes. Below this, the details for Disk 0 and Disk 1 are shown. A red box highlights the Disk 1 section, which includes a 286 MB primary partition, a 244 MB primary partition, a 6.88 GB primary partition, and 44 MB of unallocated space.

Volume	Layout	Type	File System	Status	Capacity	Free Spa...	% Free
(C:)	Simple	Basic	NTFS	Healthy (B...	59.45 GB	29.60 GB	50 %
(Disk 0 partition 1)	Simple	Basic		Healthy (R...	450 MB	450 MB	100 %
(Disk 0 partition 2)	Simple	Basic		Healthy (E...	99 MB	99 MB	100 %
(Disk 1 partition 1)	Simple	Basic		Healthy (P...	286 MB	286 MB	100 %
(Disk 1 partition 2)	Simple	Basic		Healthy (P...	244 MB	244 MB	100 %
(Disk 1 partition 3)	Simple	Basic		Healthy (P...	6.88 GB	6.88 GB	100 %

Disk	Capacity	Partitions
Disk 0 Basic 59.98 GB Online	450 MB Healthy (Recovery Partition)	99 MB Healthy (EFI System Partition)  (C:) 59.45 GB NTFS Healthy (Boot, Page File, Crash Dump, Primary Partition)
Disk 1 Removable 7.45 GB Online	286 MB Healthy (Primary Partition)	244 MB Healthy (Primary Partition) 6.88 GB Healthy (Primary Partition) 44 MB Unallocated
CD-ROM 0 DVD (D:) No Media		







## macOS

1. SD ( 3.0 GB .gz ) new micro SD card image
2. dd-utility . <https://www.thefanclub.co.za> github
3. SMS-200 SD PC SD

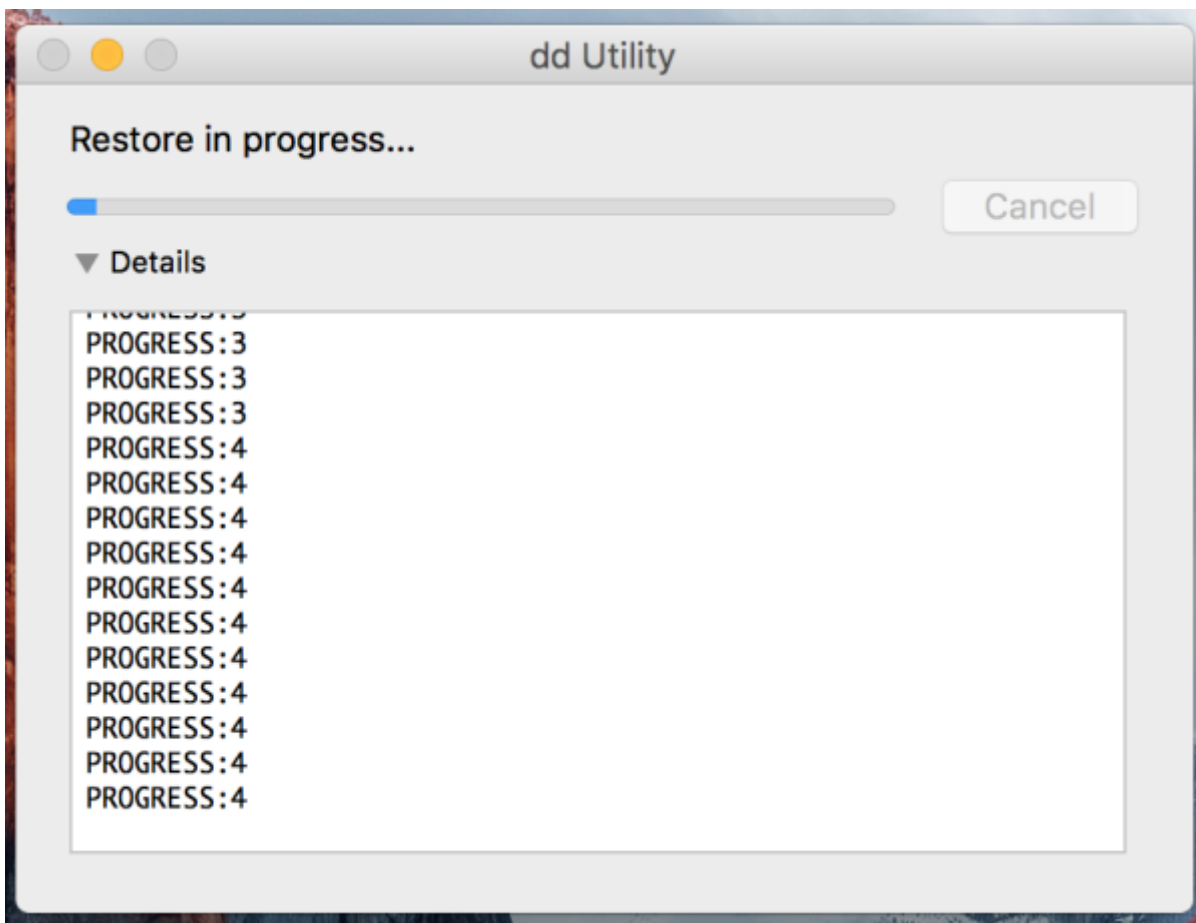
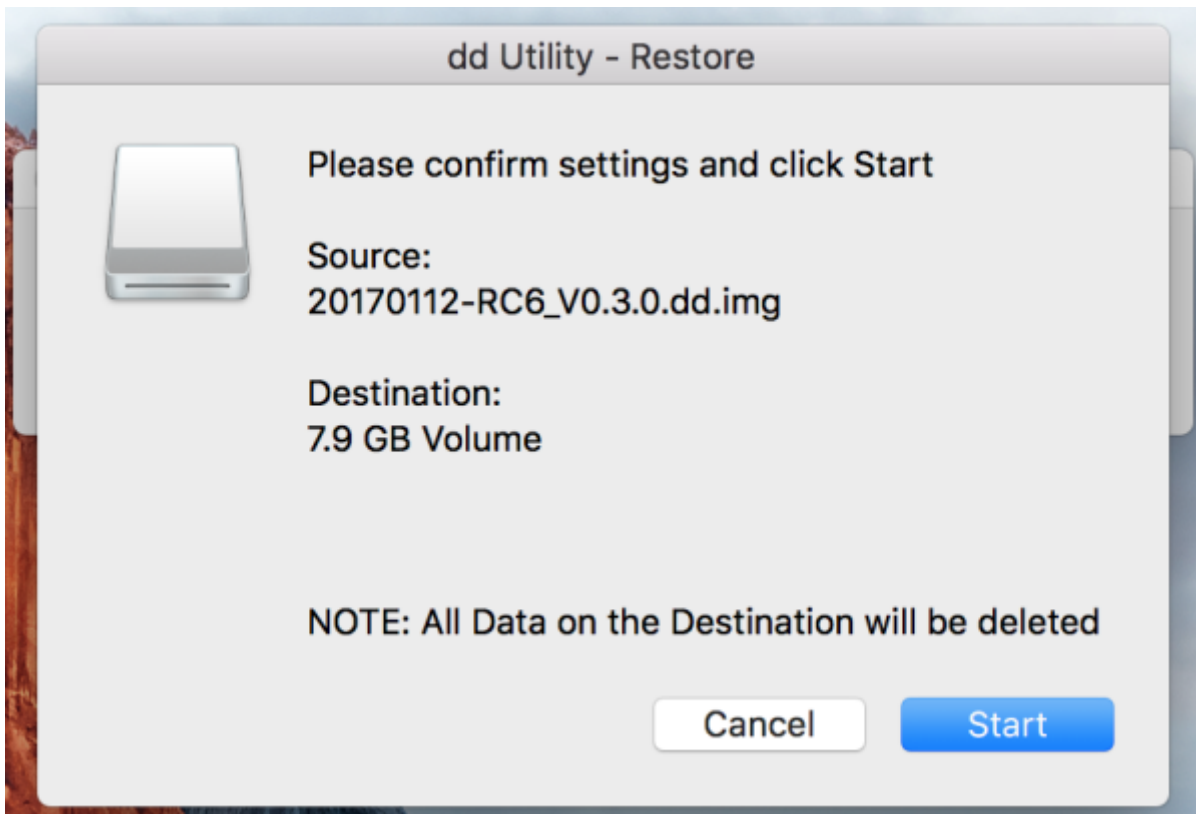
## Start Restore

dd-utility 'Restore' .img



SD





sMS-200

SD

## dd-utility

- [imageUSB for Windows](#)
- [dd-utility for macOS](#)

## micro SD card

- [Eunhasu V0.4.22](#)
- [Eunhasu V0.5.1](#)
- [Eunhasu V0.5.2](#)
- [Eunhasu V0.5.31](#)
- [Eunhasu V0.5.41](#)
- [Eunhasu V0.5.51](#)

From:

<https://www.wiki.sotm-audio.com/> - **SOTM docs**

Permanent link:

[https://www.wiki.sotm-audio.com/doku.php?id=ko:eunhasu:burn\\_sdcard\\_image&rev=1703697063](https://www.wiki.sotm-audio.com/doku.php?id=ko:eunhasu:burn_sdcard_image&rev=1703697063)

Last update: **2023/12/27 12:11**

