

mSD

micro SD

Windows

1. SD
.(3.0 GB .gz) [new micro SD card image](#)
2. SD
.(7.9 GB .img)
3. PC [imageUSB](#) ,
4. SMS-200 SD
SD PC .

imageUSB

[imageUSB](#) , USB 가 ,
'Refresh Drives' .



USB

USB



'Browse'



'Write'

SD



1. 가 SD SMS-200
2. SMS-200

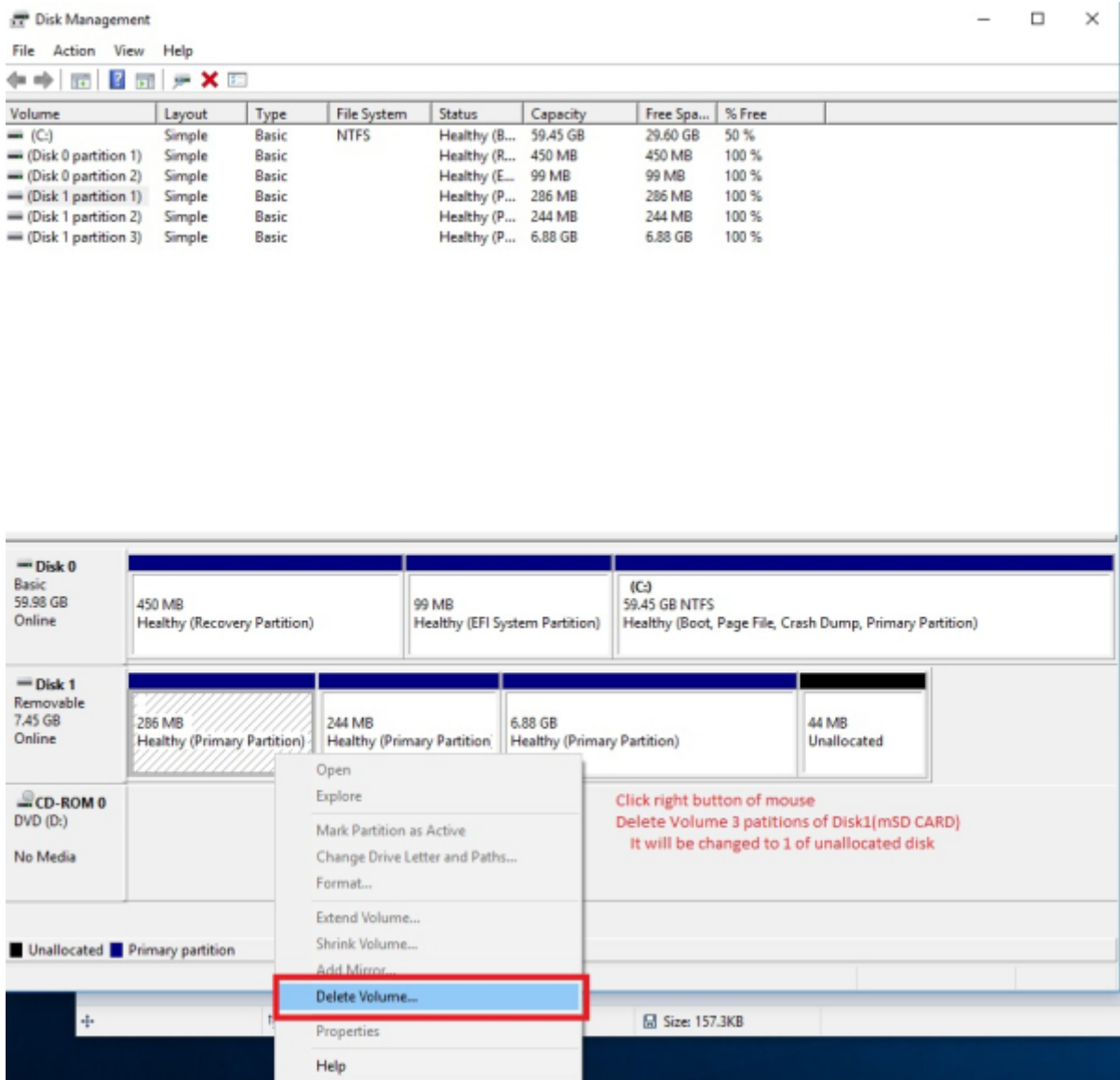
SD



The screenshot shows the Windows Disk Management console. At the top, a table lists the system's volumes. Below this, the graphical representation of Disk 0 and Disk 1 is shown. Disk 0 is a basic disk with a total capacity of 59.98 GB, containing a 450 MB Recovery Partition, a 99 MB EFI System Partition, and a 59.45 GB NTFS primary partition (C:). Disk 1 is a removable disk with a total capacity of 7.45 GB, containing three 286 MB, 244 MB, and 6.88 GB primary partitions, and a 44 MB unallocated space. A red rectangle highlights the Disk 1 section.

| Volume | Layout | Type | File System | Status | Capacity | Free Spa... | % Free |
|----------------------|--------|-------|-------------|---------------|----------|-------------|--------|
| (C:) | Simple | Basic | NTFS | Healthy (B... | 59.45 GB | 29.60 GB | 50 % |
| (Disk 0 partition 1) | Simple | Basic | | Healthy (R... | 450 MB | 450 MB | 100 % |
| (Disk 0 partition 2) | Simple | Basic | | Healthy (E... | 99 MB | 99 MB | 100 % |
| (Disk 1 partition 1) | Simple | Basic | | Healthy (P... | 286 MB | 286 MB | 100 % |
| (Disk 1 partition 2) | Simple | Basic | | Healthy (P... | 244 MB | 244 MB | 100 % |
| (Disk 1 partition 3) | Simple | Basic | | Healthy (P... | 6.88 GB | 6.88 GB | 100 % |

| Disk | Capacity | Partition 1 | Partition 2 | Partition 3 | Partition 4 |
|--|--|---|---|----------------------|-------------|
| Disk 0 Basic 59.98 GB Online | 450 MB Healthy (Recovery Partition) | 99 MB Healthy (EFI System Partition) | (C:) 59.45 GB NTFS Healthy (Boot, Page File, Crash Dump, Primary Partition) | | |
| Disk 1 Removable 7.45 GB Online | 286 MB Healthy (Primary Partition) | 244 MB Healthy (Primary Partition) | 6.88 GB Healthy (Primary Partition) | 44 MB Unallocated | |
| CD-ROM 0 DVD (D:) | No Media | | | | |







macOS

1. SD (3.0 GB .gz) new micro SD card image
2. dd-utility . <https://www.thefanclub.co.za> github
3. SMS-200 SD PC SD

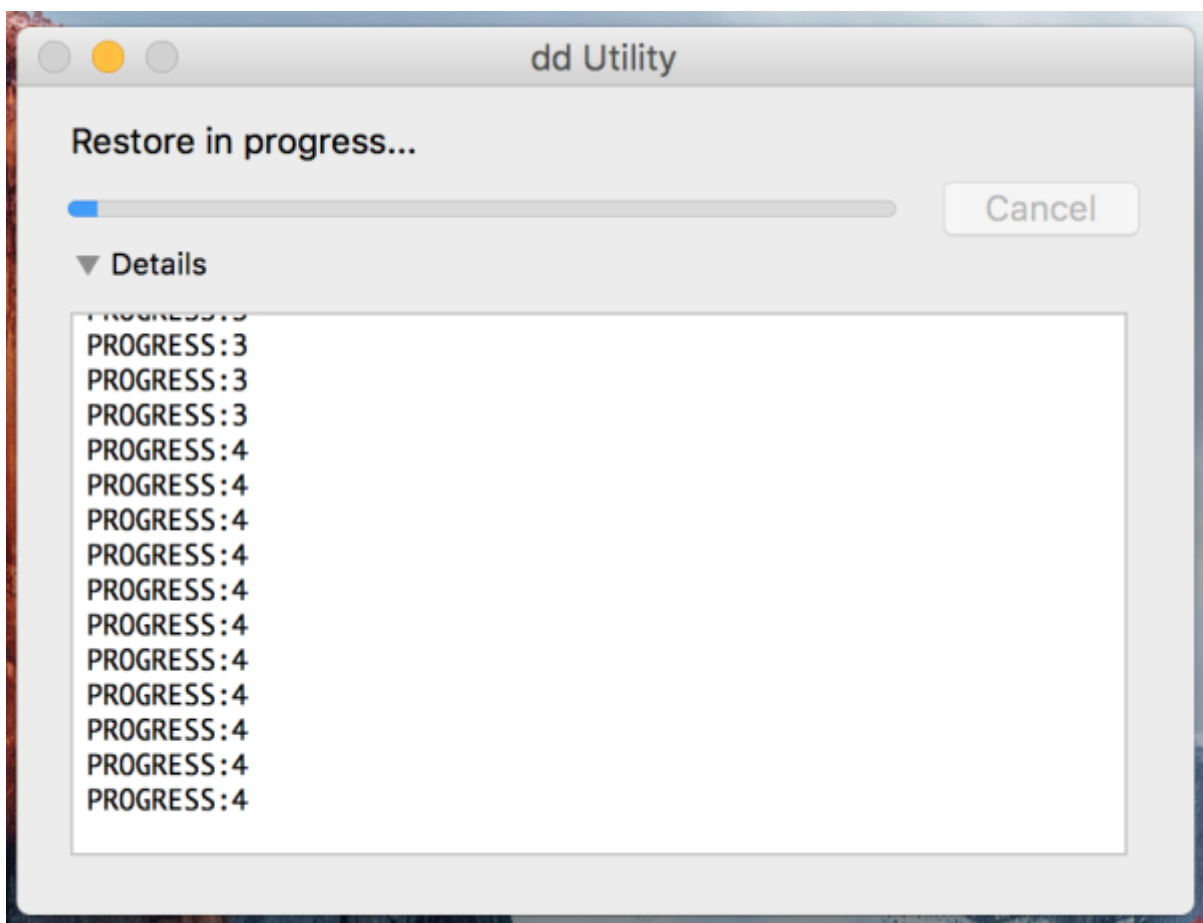
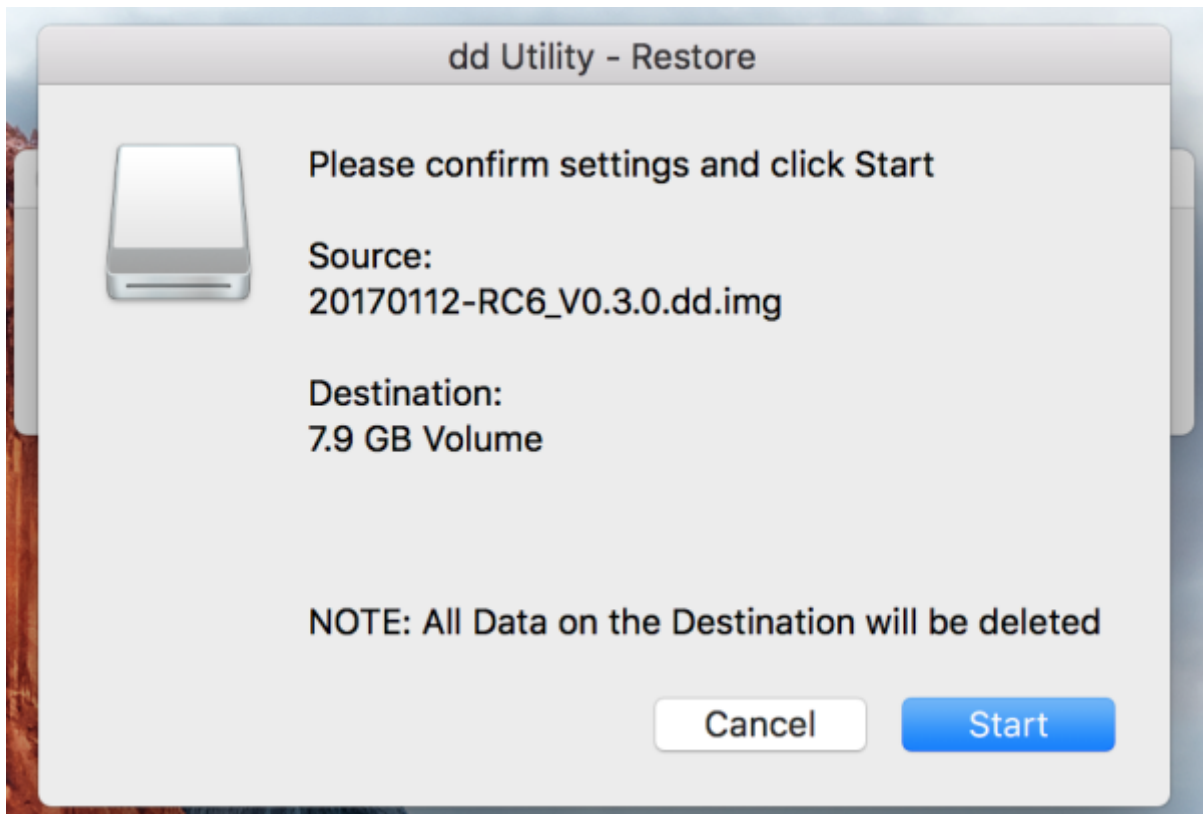
Start Restore

dd-utility 'Restore' .img



SD





sMS-200

SD

dd-utility

- [imageUSB for Windows](#)
- [dd-utility for macOS](#)

micro SD card

- [Eunhasu V0.4.22](#)
- [Eunhasu V0.5.1](#)
- [Eunhasu V0.5.2](#)
- [Eunhasu V0.5.31](#)

From:

<https://www.wiki.sotm-audio.com/> - **SOTM docs**

Permanent link:

https://www.wiki.sotm-audio.com/doku.php?id=ko:eunhasu:burn_sdcard_image&rev=1672240515

Last update: **2022/12/28 10:15**

