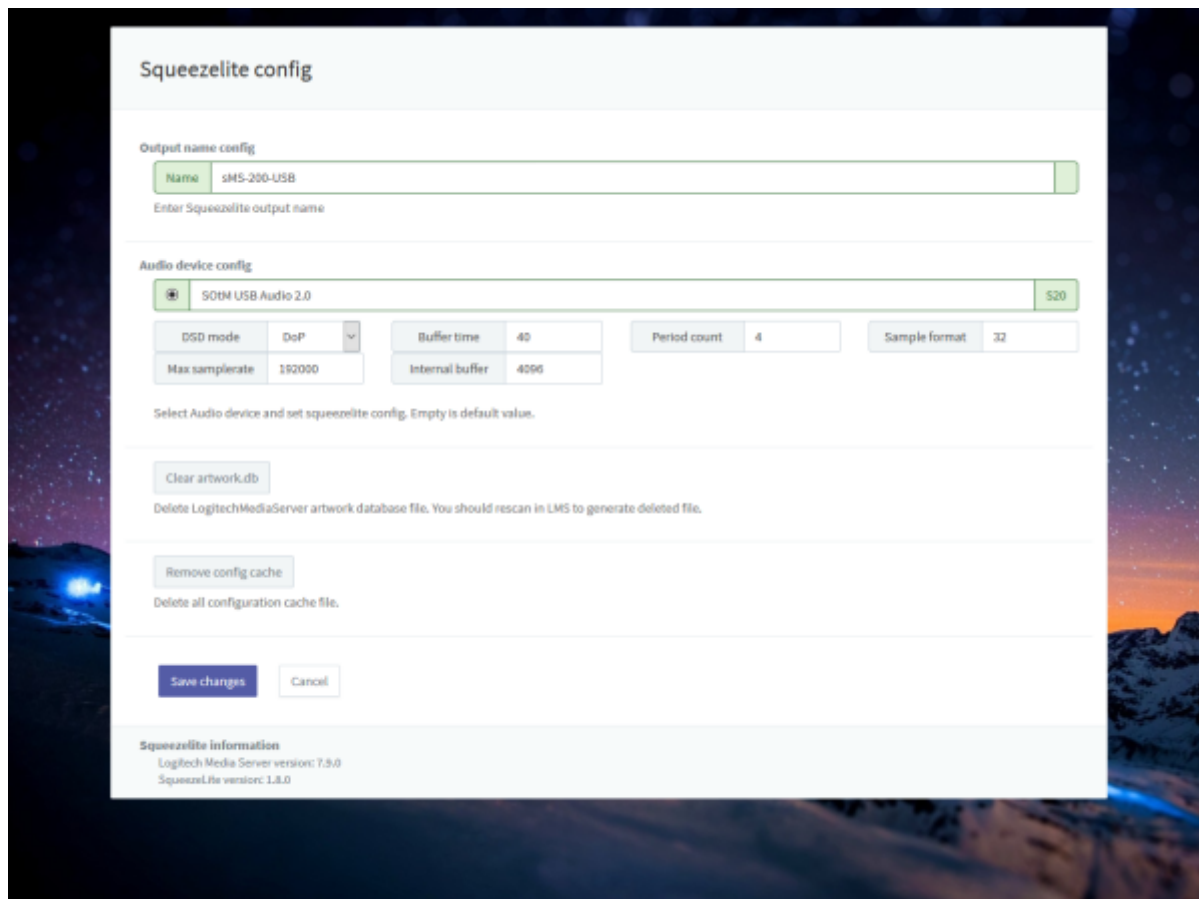


Squeezelite / Logitech Media Server

Squeezelite is a network music player which could be used with Logitech Media Server(aka. LMS). Eunhasu has LMS inside of itself which is available Tidal, Qobuz and internet radio.

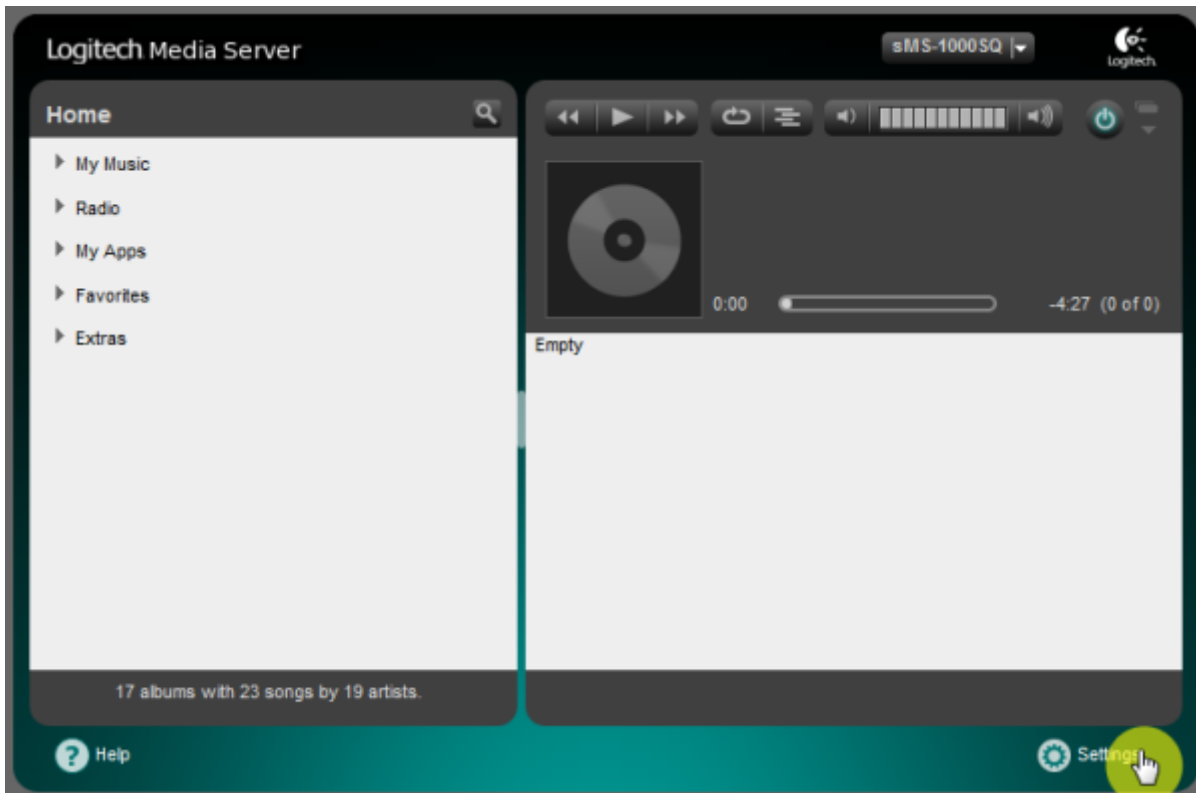


- **Name:** A name of device Squeezelite appearing on LMS. This could be changed if you need.
- **Audio device config:** Select a radio button of USB DAC which is going to use and click 'Save changes' to use the USB DAC.
- **DSD mode:** Set playback mode. Convert music to PCM or playing DSD music file by DoP or native. DAC should support native DSD when native mode.
- **Clear artwork.db:** Delete LMS artwork database file. You should rescan in LMS to generate deleted file.
- **Clear config cache:** Delete LMS config cache files.

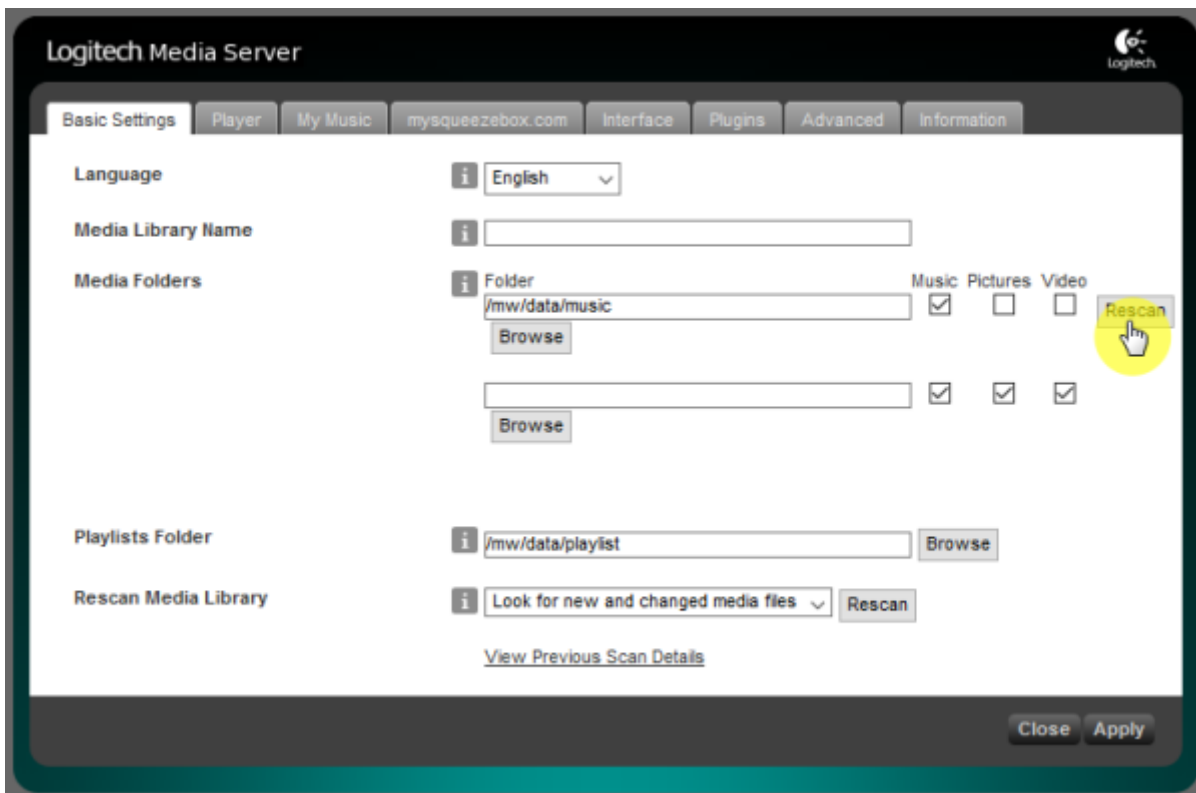
Configuration

LMS library rescan guide

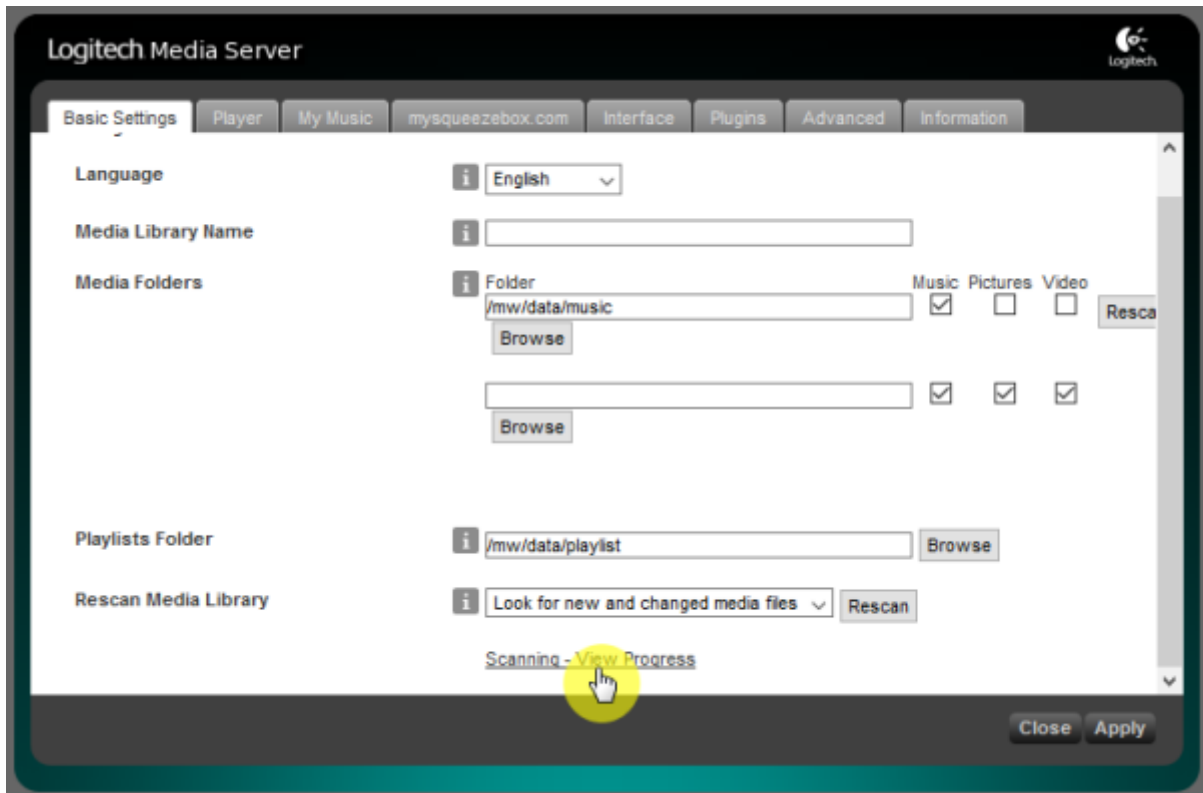
[Move on to Settings menu page.](#)



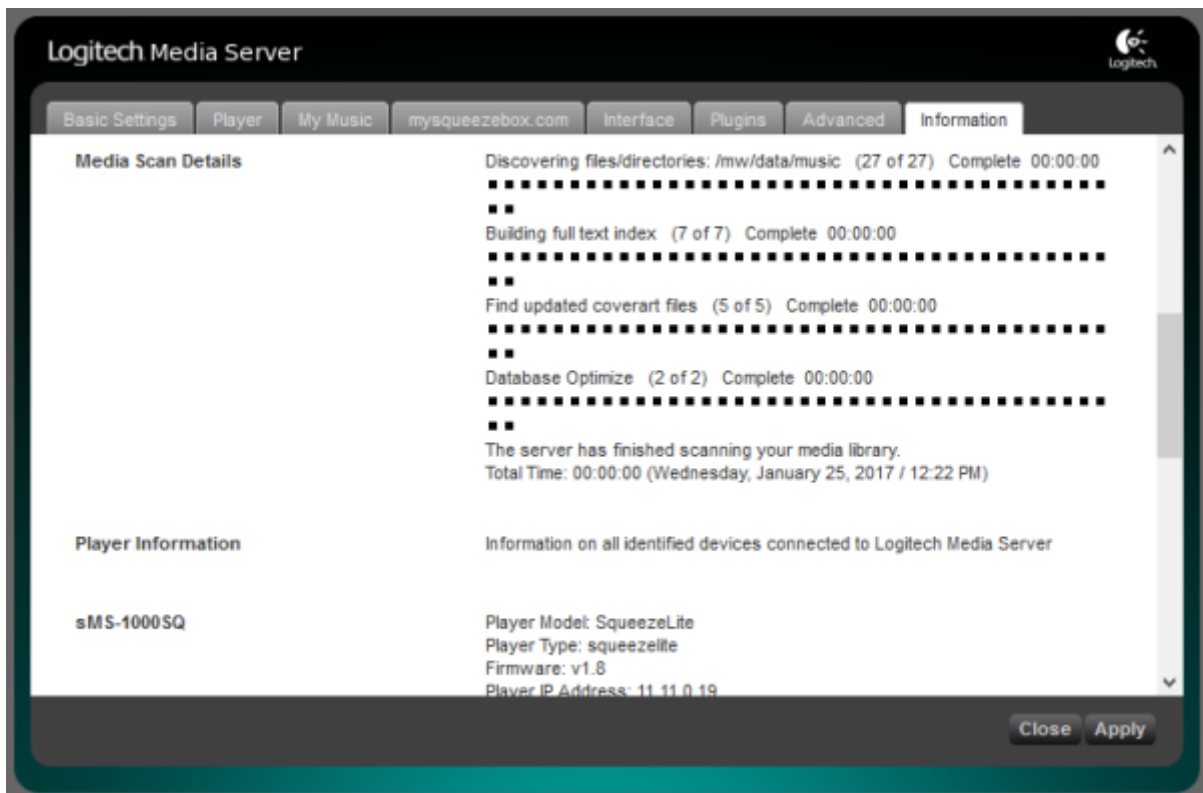
Click "Rescan" button to start scan on Basic Settings tab.



Click "Scanning - View Progress" link at bottom of page if you'd like to see scanning states.



Scanning states screen.

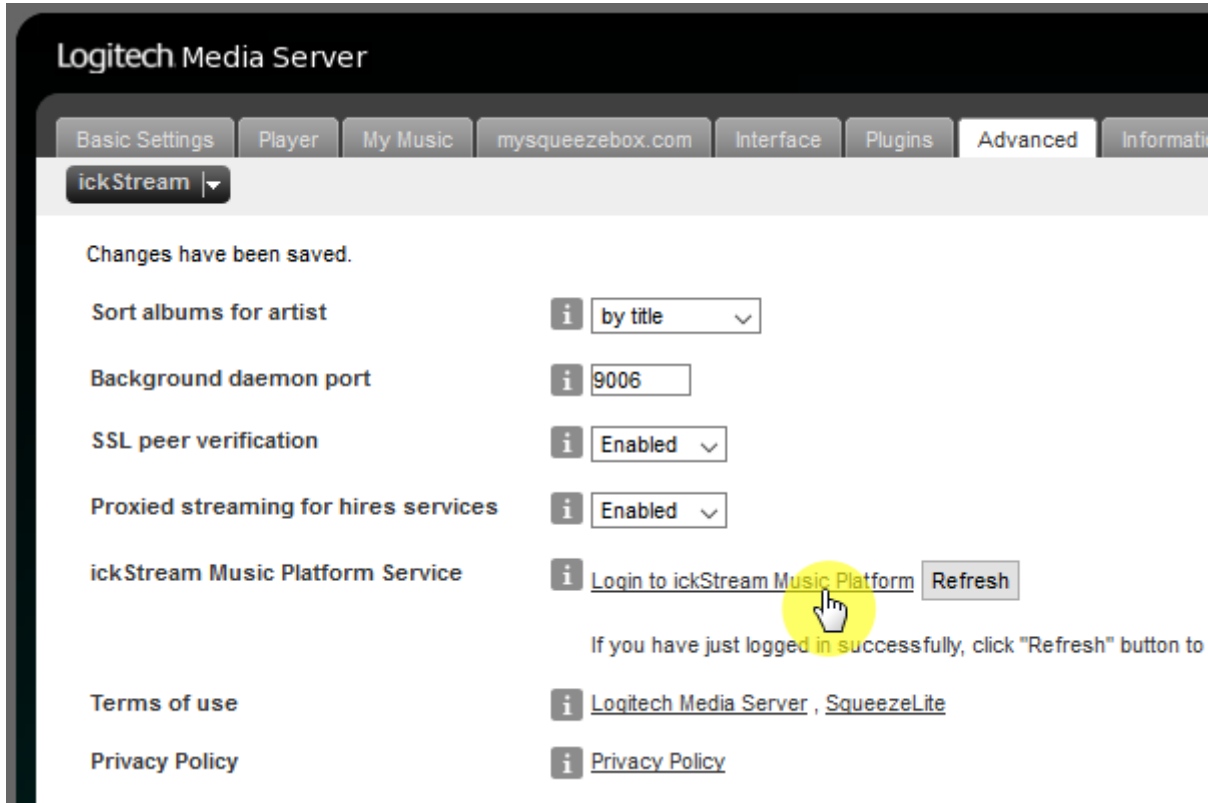


ickStream

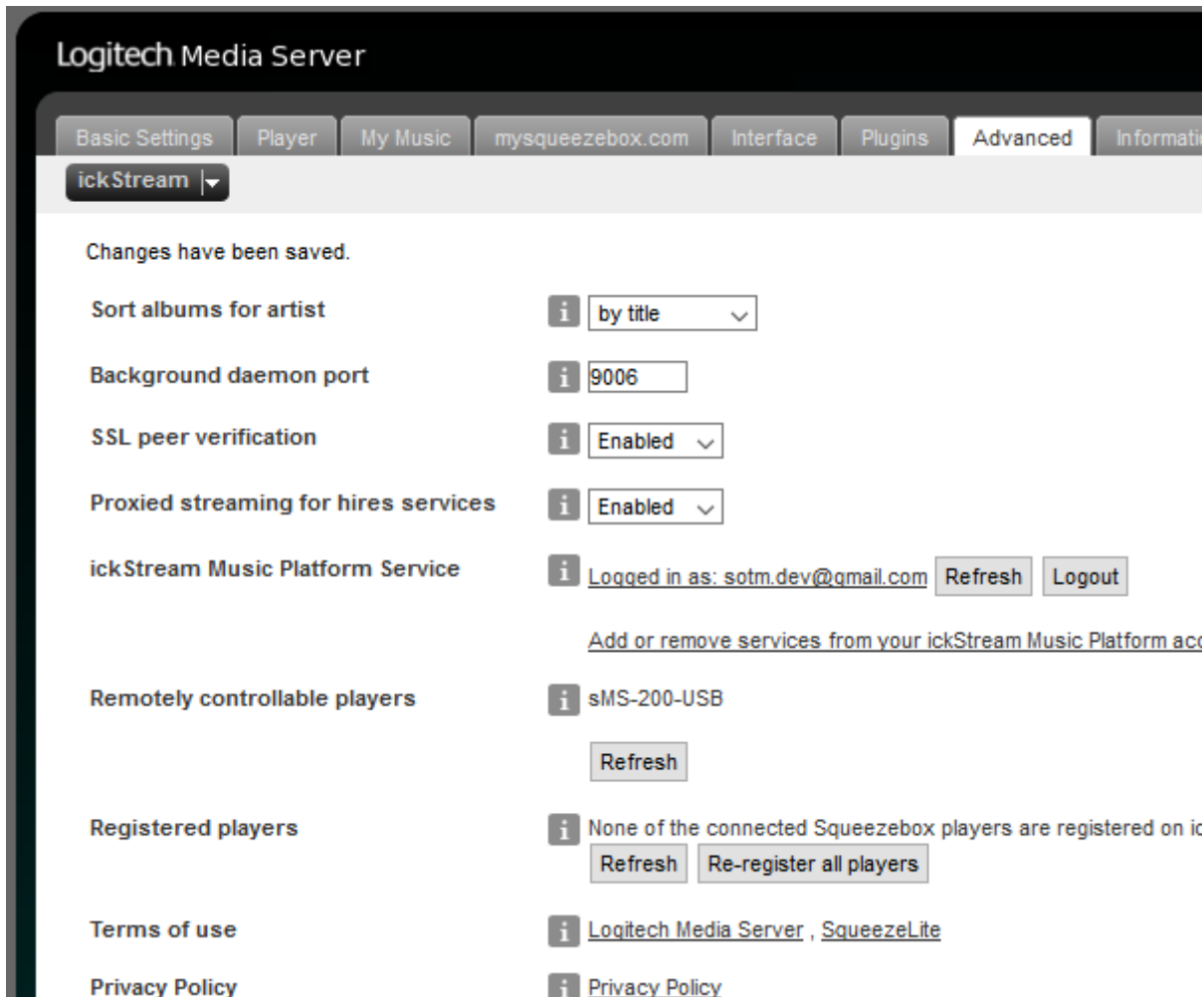
ickStream plugin provides lots of third-party feature like Quboz, TIDAL. Install guide are following.

- http://wiki.ickstream.com/index.php/Open_Beta_Squeezebox_Installation

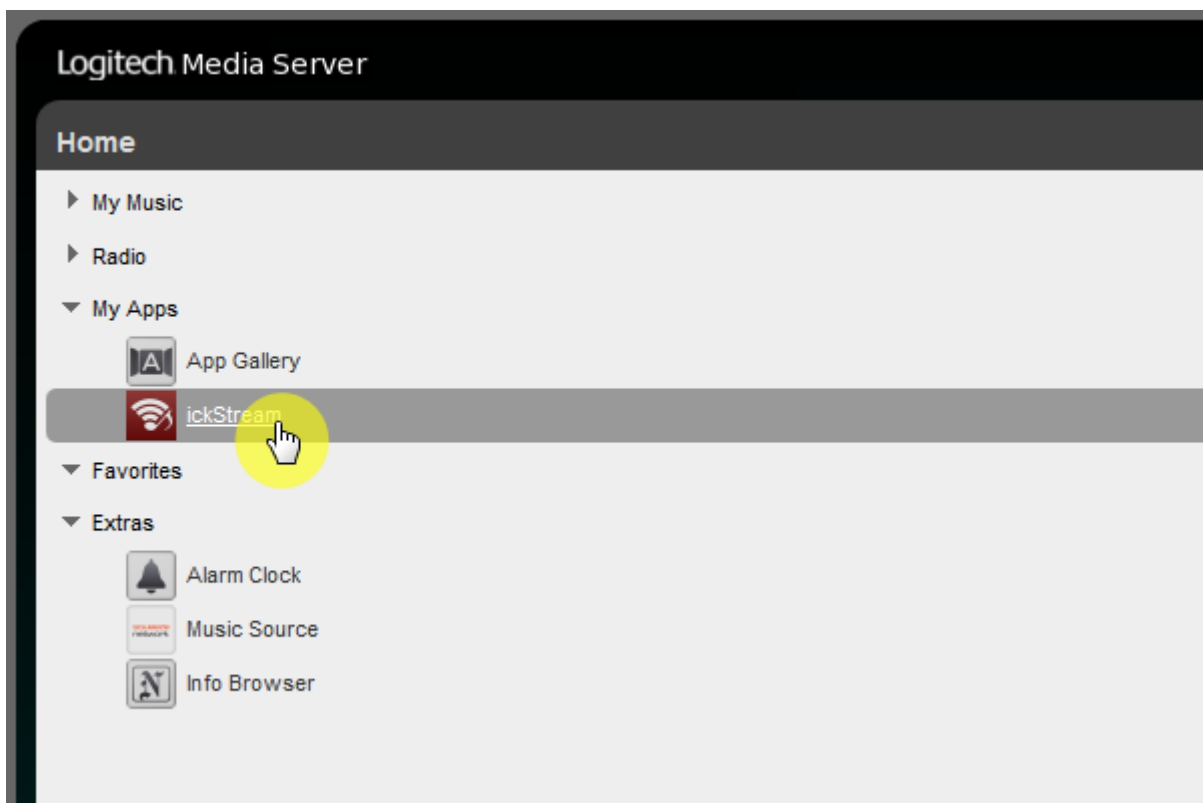
After finish ickStream plugin installation, you have to agree EULA and login ickStream in LMS > Settings > Advanced > ickStream page.

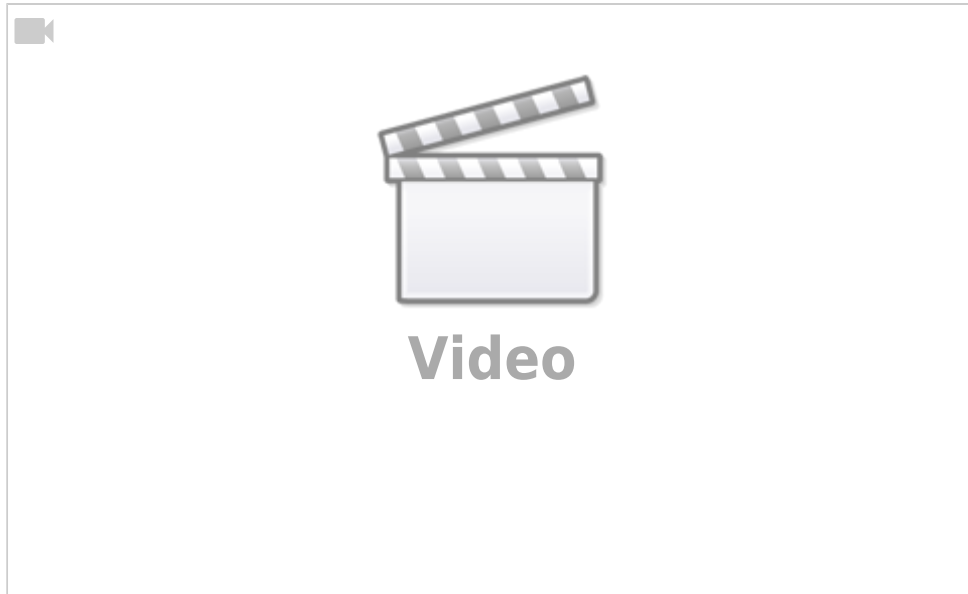


Login complete.



You can see ickStream item in My Apps of LMS main screen.





Video: how to install and set Spotify plugin in LMS; Spotify premium account required.

From:
<https://www.wiki.sotm-audio.com/> - **SOTM docs**

Permanent link:
<https://www.wiki.sotm-audio.com/doku.php?id=en:squeezelite&rev=1506396875>

Last update: **2017/09/25 23:34**

