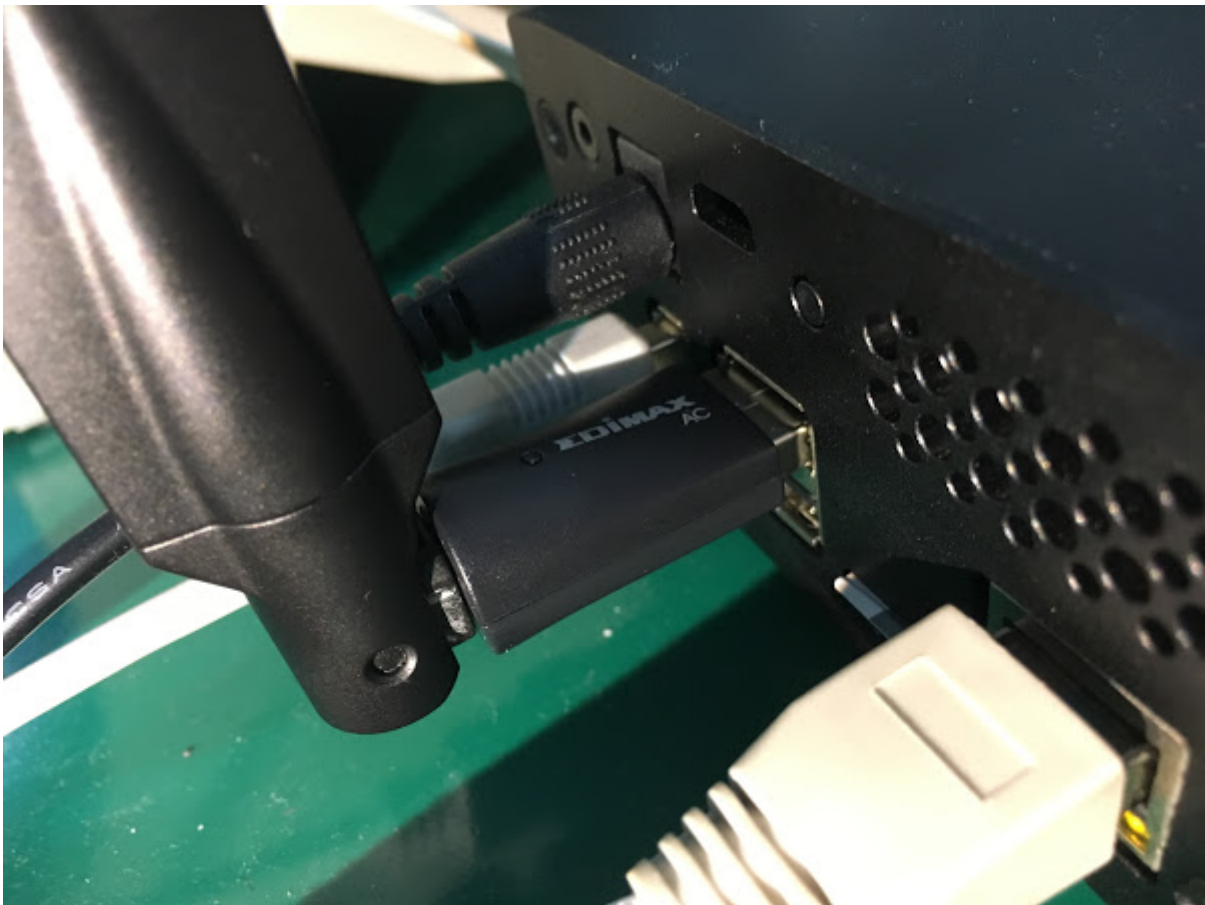


Requirement

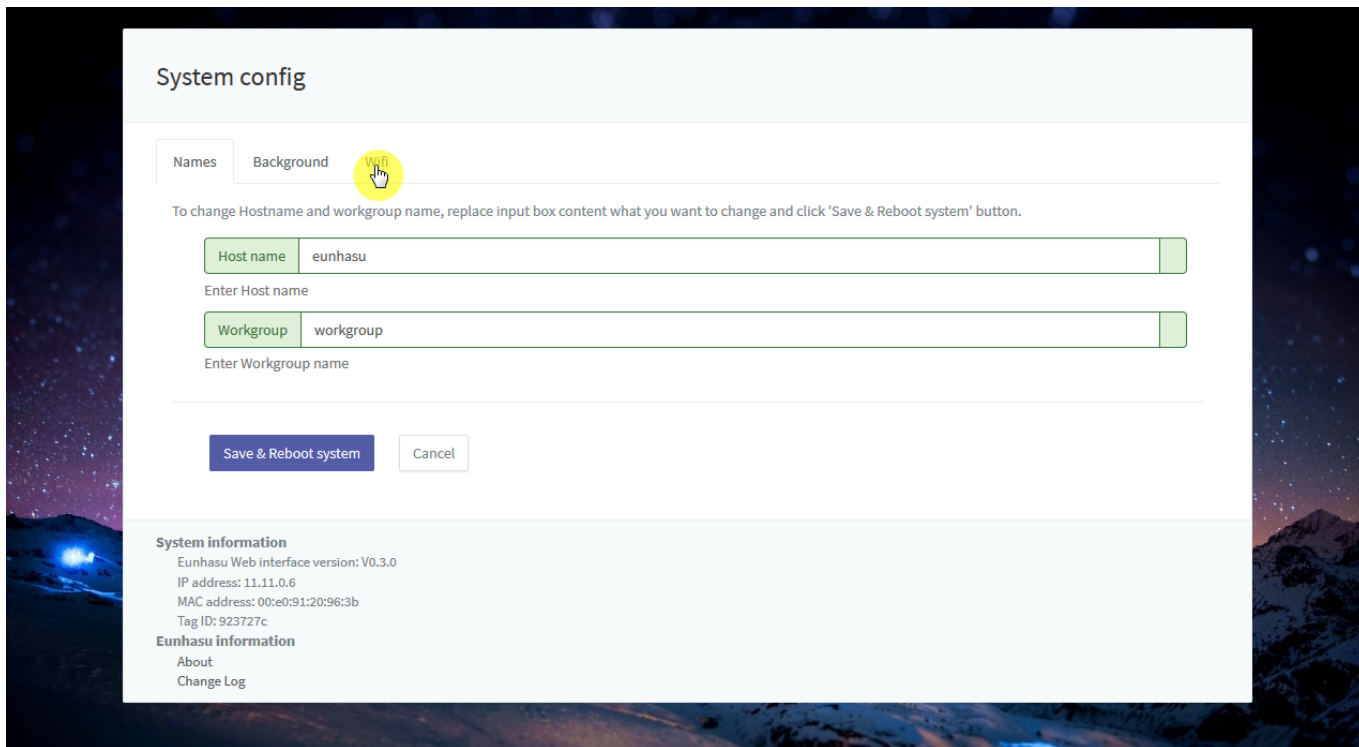
- SMS-200 V0.3.0 or SMS-1000SQ Eunhasu V0.3.0
- Wifi dongle
 - RTL8812AU chipset

Simple Instruction

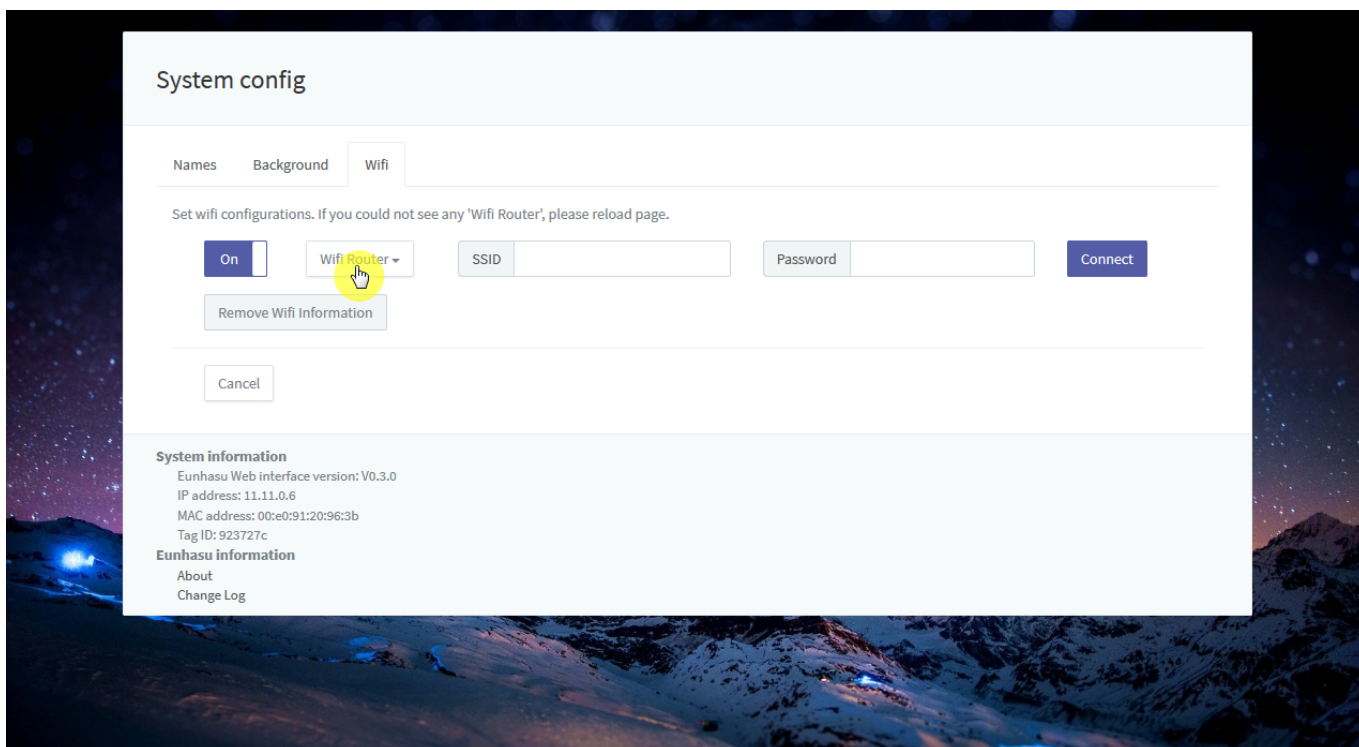
Connect Wifi USB dongle into USB port.



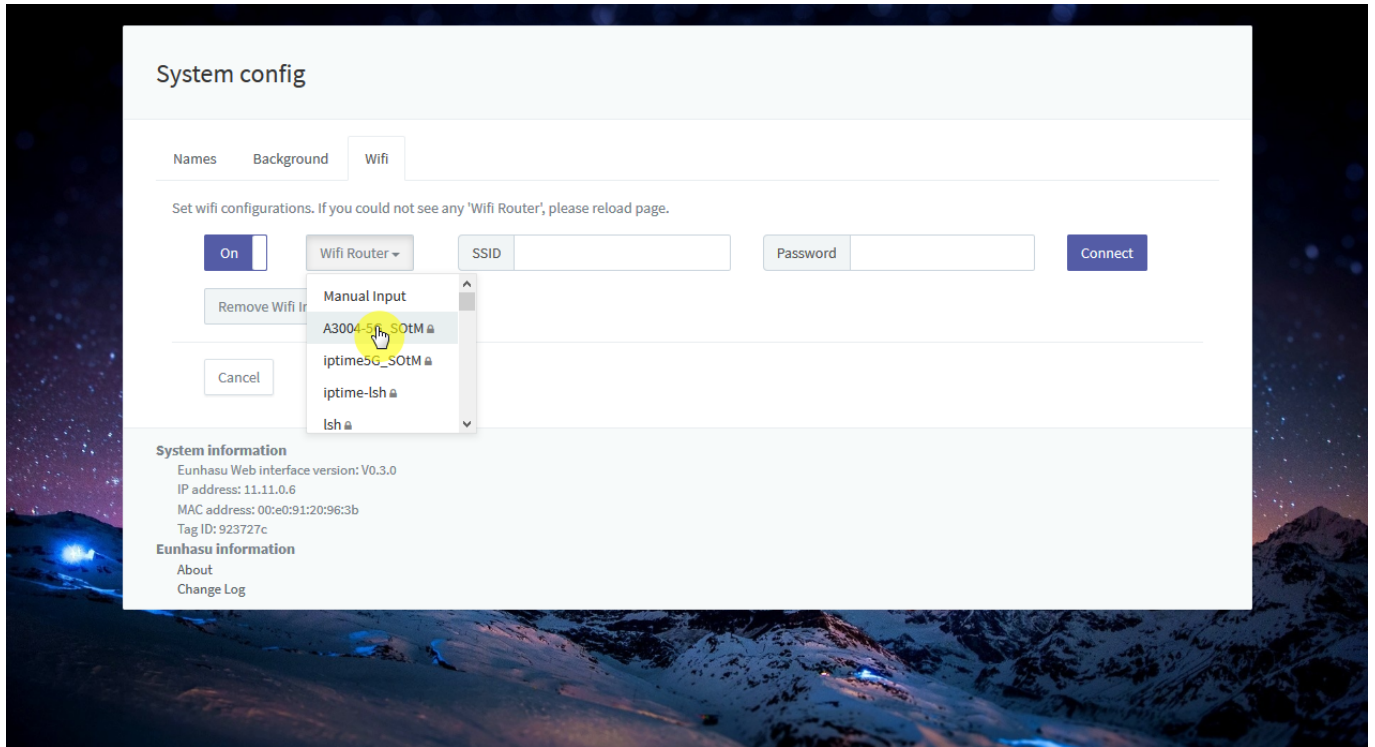
Click 'Wifi' tab in System config page.



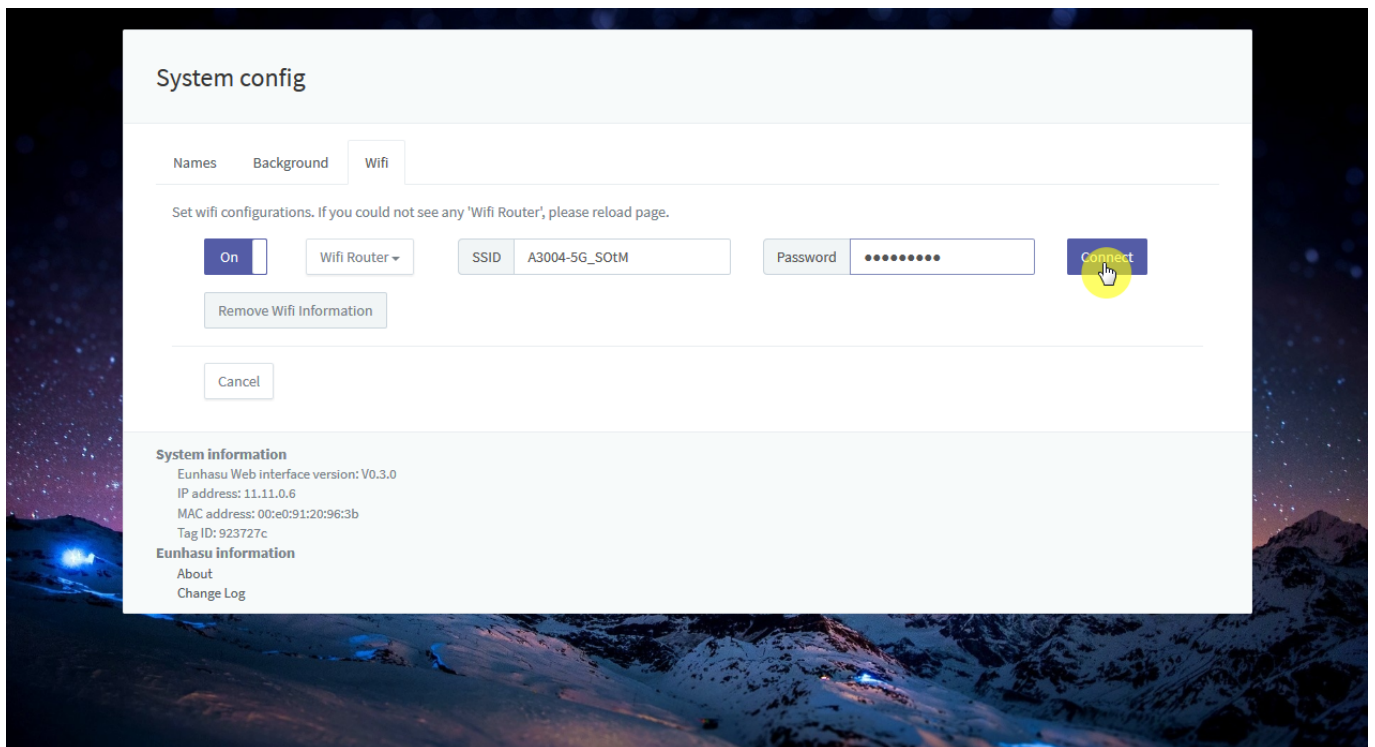
Click 'Wifi Router' button to show Wireless Access Point.



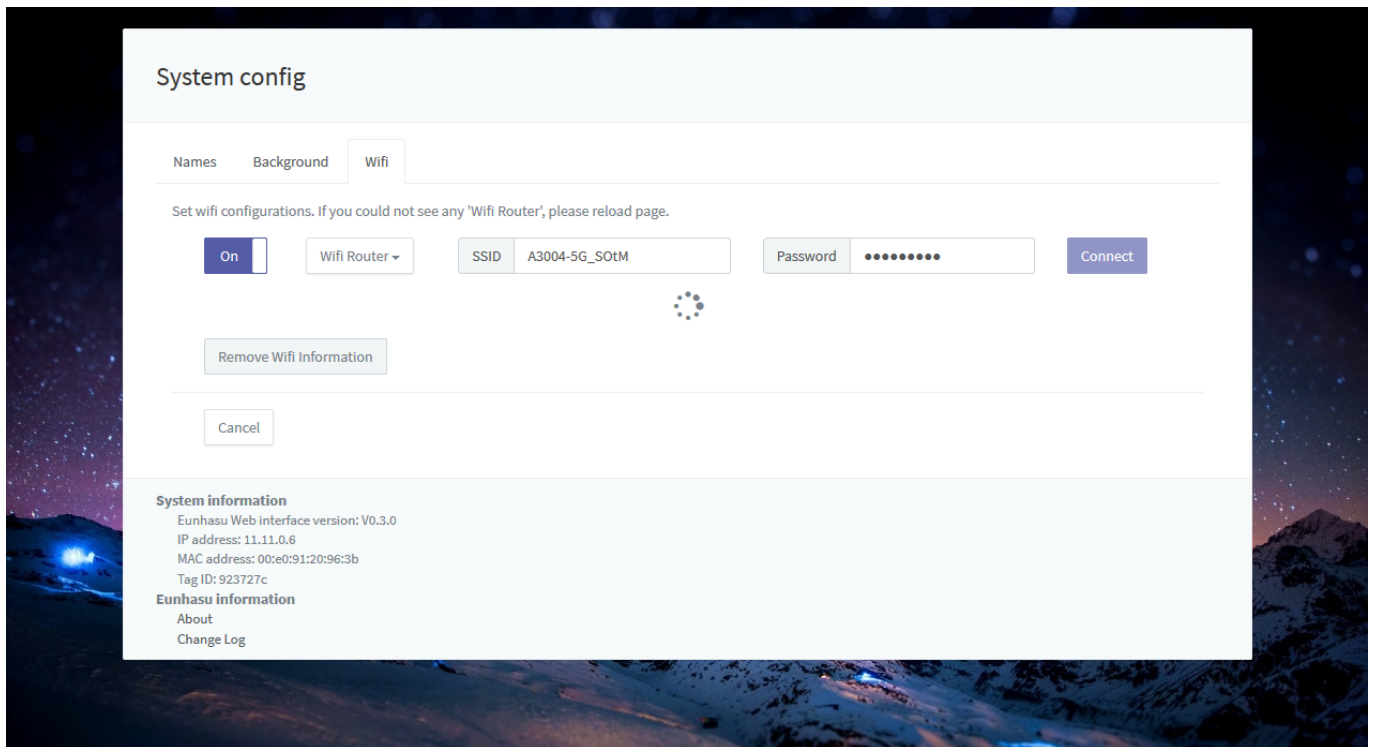
Select AP what you want.



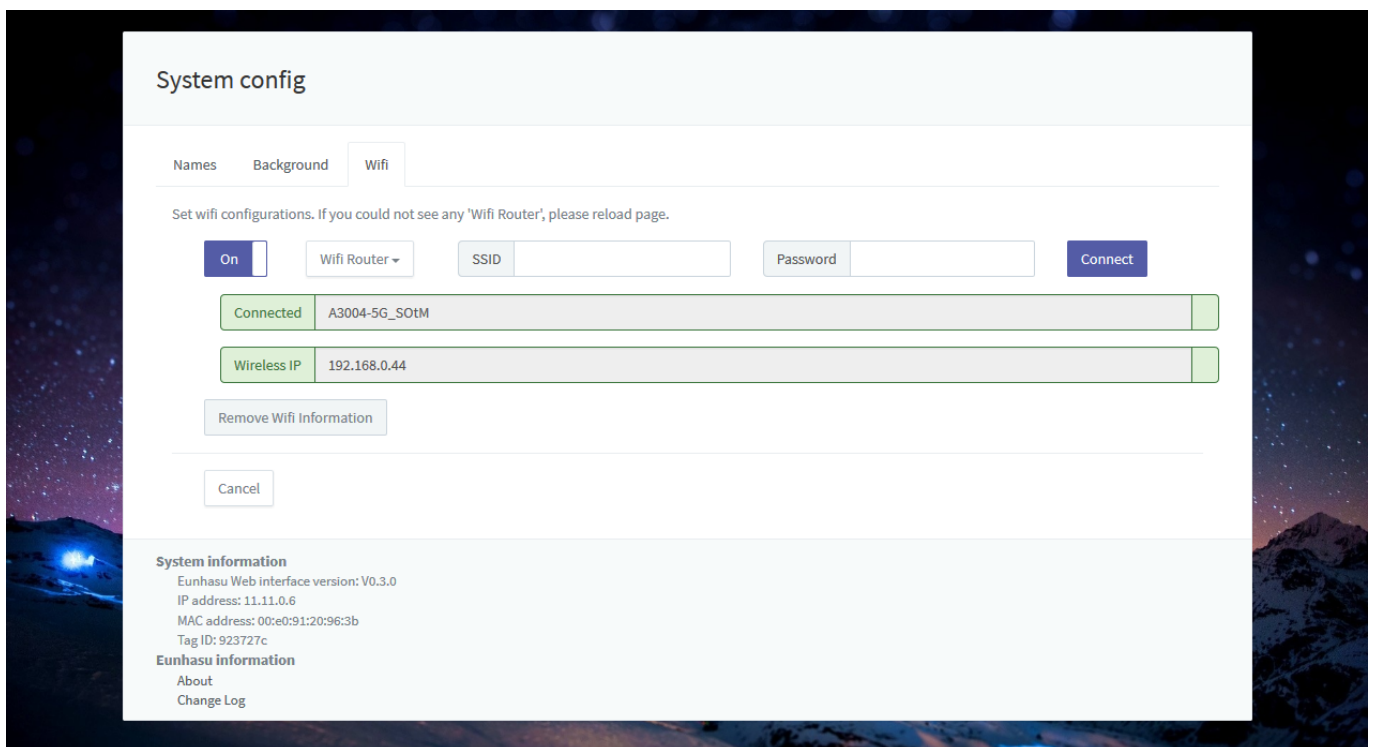
Enter password or secret if it required.



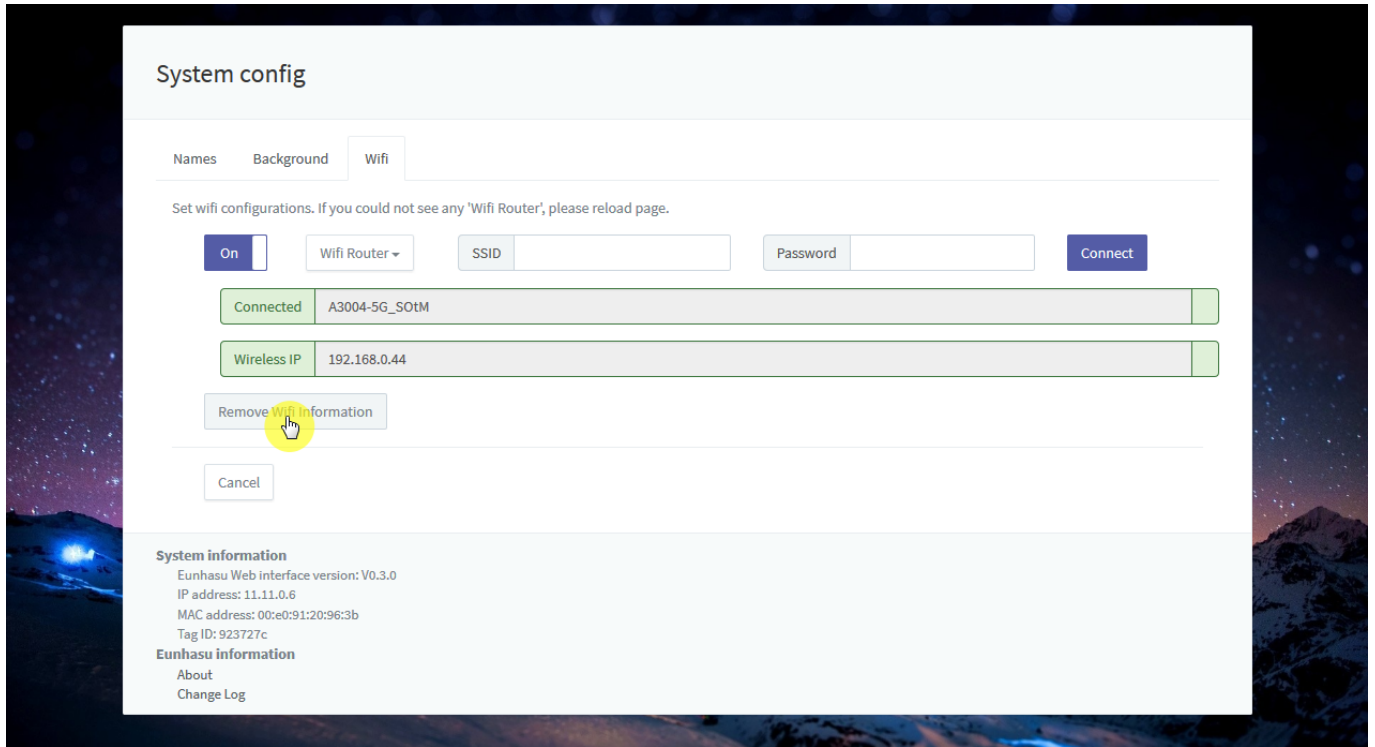
Waiting for seconds.



After connect successfully, you can see IP address like screen shot.



'Remove Wifi Information' button will remove all stored information include name and password.



From:
<https://www.wiki.sotm-audio.com/> - **SOTM docs**

Permanent link:
https://www.wiki.sotm-audio.com/doku.php?id=en:how_to_use_wifi_in_eunhasu&rev=1483693105

Last update: **2017/01/06 03:58**

